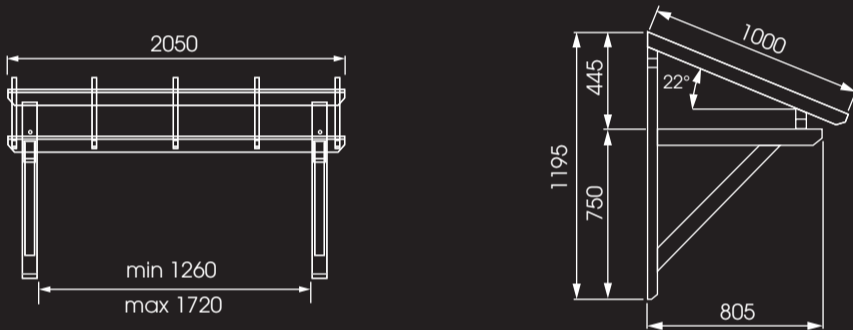


Auvent pour porte d'entrée
2.05 x 1.00 m

Marquesinas para puerta de entrada • Alpendres para porta de entrada
Tettoie per porta d'ingresso • Lufels voor de voordeur • Canopies for front door



vendu en kit

se entrega en un kit
entregue em kit
venduto in kit
geleverd in kit
supplied in kit form

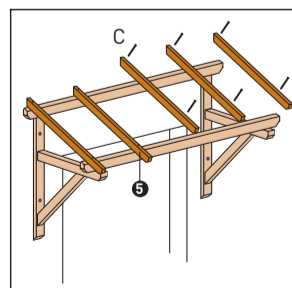
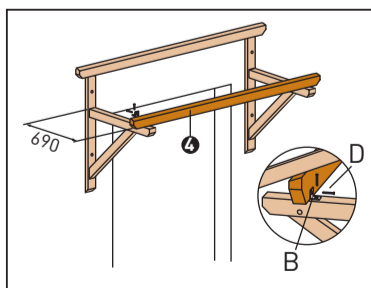
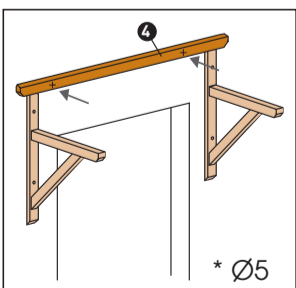
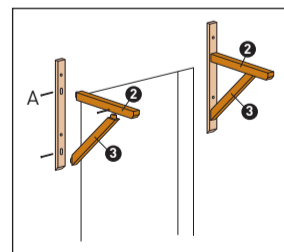
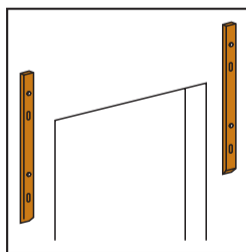
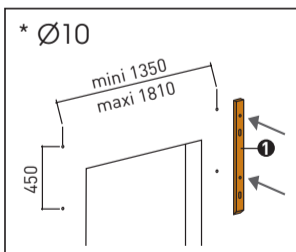
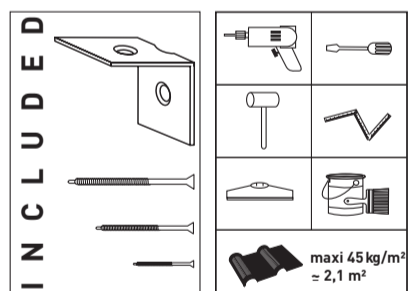
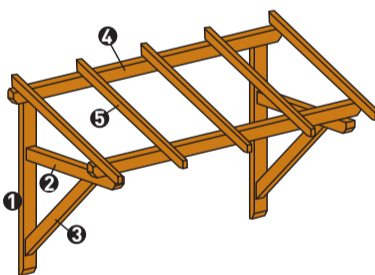


peut être peint ou lasuré

puede ser pintada o barnizada
pode ser pintado
puo' essere verniciato o tinto
met verf of lazuurbeits
can be painted or stained



| | | | |
|---|--|-----|----------------|
| 1 | | x2 | 45 x 90 x 1030 |
| 2 | | x2 | 70 x 70 x 800 |
| 3 | | x2 | 50 x 68 x 830 |
| 4 | | x2 | 45 x 90 x 2050 |
| 5 | | x5 | 30 x 63 x 1000 |
| A | | x6 | ∅ 5 x 70 |
| B | | x2 | 37 x 37 x 25 |
| C | | x10 | ∅ 5 x 100 |
| D | | x4 | ∅ 4,5 x 45 |



⊕ Accessoires de fixation à choisir selon le matériau constituant le mur. (1 - 4) • Accessorios de fijación a escoger segun el material del muro. (1 - 4)
Accessori di fissaggio da scegliere a seconda del materiale del muro. (1 - 4) • Acessórios de fixação a serem escolhidos segundo material de construção da parede. (1 - 4) • Bevestigingtoebehoren te kiezen afhankelijk van het materiaal van de muur. (1 - 4) • Fixing brackets must be chosen in accordance with the wall material. (1 - 4)



Fabrication française
Made in France
Sapin/épicéa naturel européen



réf. MAR2010

