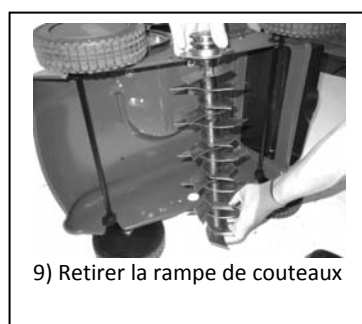
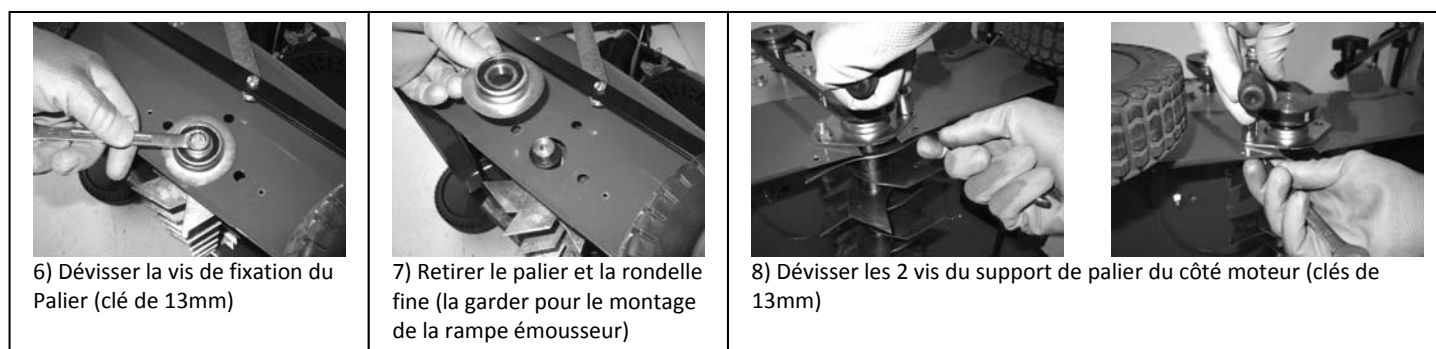
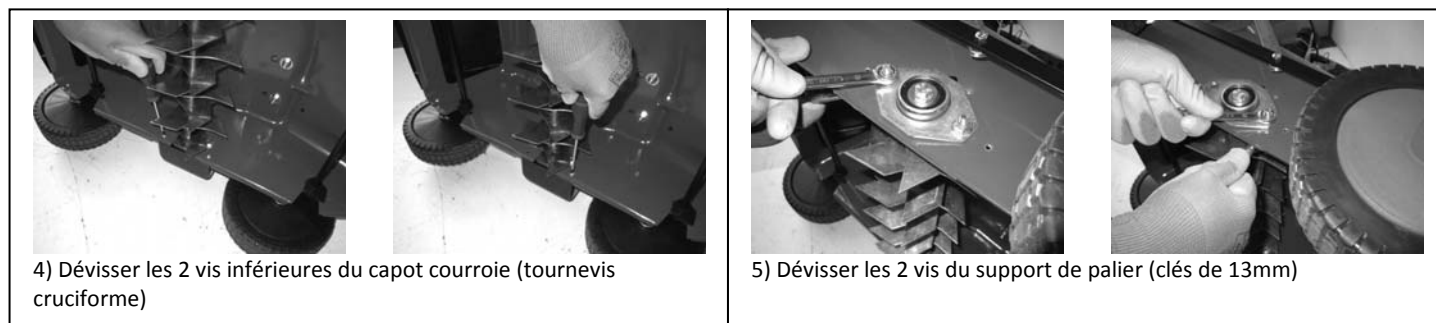
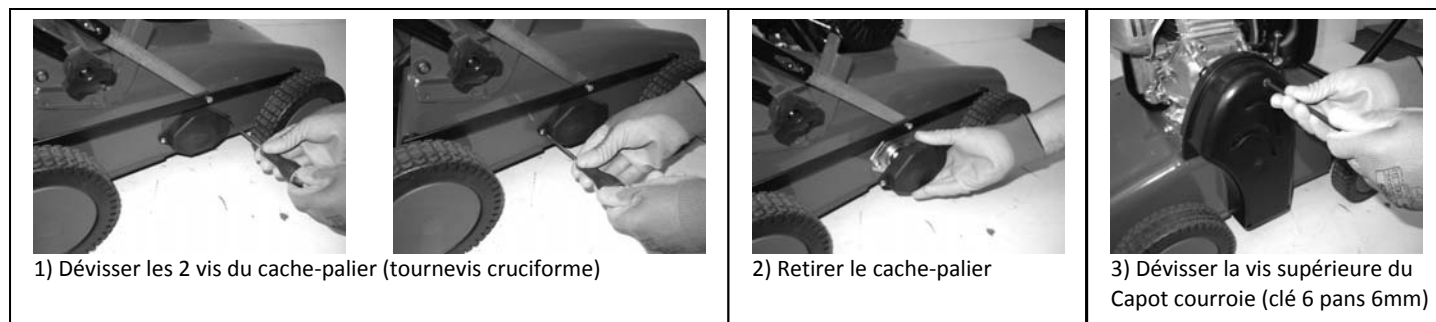


MONTAGE RAMPE EMOUSSEUR SCARIFICATEURS S 390

ATTENTION : Débrancher le câble de la bougie avant toute intervention.










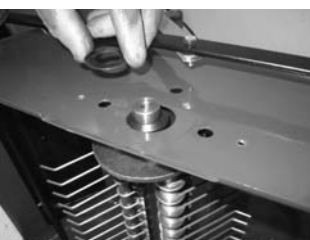




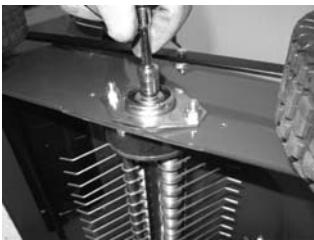
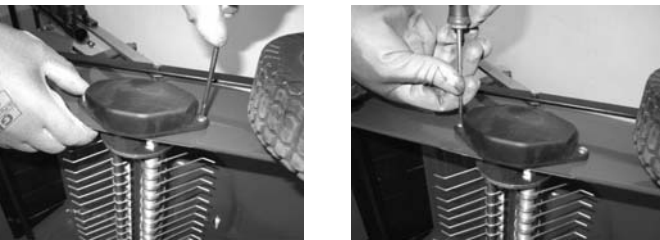
Temps de montage : environ 15 minutes.

1 – Démontage de la rampe scarificateur :



MONTAGE RAMPE EMOUSSEUR SCARIFICATEURS S 390 (SUITE)

2 – Remontage de la rampe émousseur :

 <p>10) Retirer le palier de la rampe émousseur</p>	 <p>11) Insérer la rampe émousseur dans le chassis</p>	 <p>12) Remettre la courroie sur les 2 poulies</p>	
 <p>13) Monter et serrer les 2 vis du support de palier du côté moteur (clés de 13mm)</p>	 <p>14) Remettre le capot courroie et serrer la vis supérieure (clé 6 pans 6mm)</p>		
 <p>15) Visser les 2 vis inférieures du capot courroie (tournevis cruciforme)</p>	 <p>16) Remettre la rondelle fine (de la rampe démontée précédemment) à l'extrémité de l'arbre</p>		
 <p>17) Monter le palier</p>	 <p>18) Poser le support de palier</p>	 <p>19) Monter et serrer les 2 vis du support de palier (clés de 13mm)</p>	
 <p>20) Serrer la vis de l'arbre (clé de 13mm)</p>	 <p>21) Remonter le cache-palier et serrer les 2 vis (tournevis cruciforme)</p>		