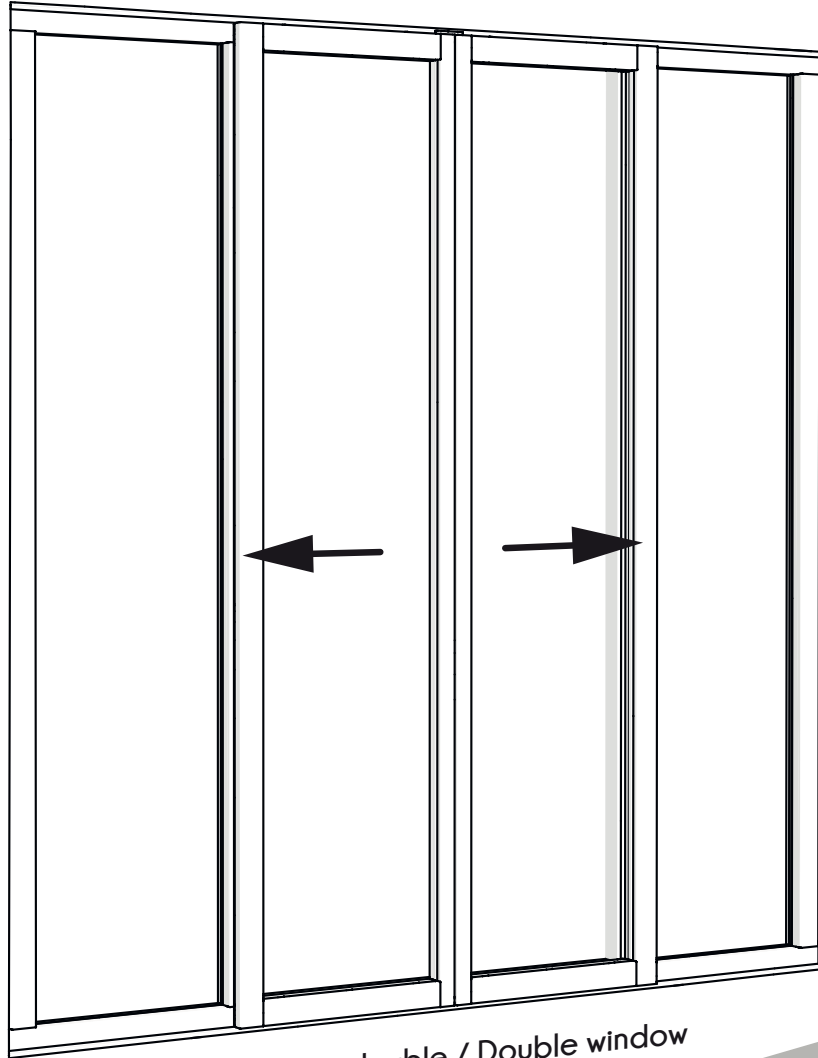


# Verrière Passe-plat

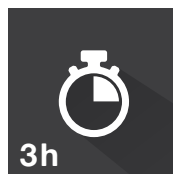
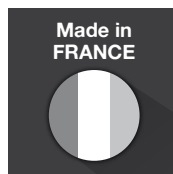
## Pass through glass wall

Verrière avec fenêtre coulissante incluse / Sliding Window included



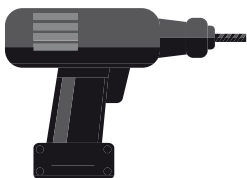
Fenêtre double / Double window

**x4** Vitrages / Glasses



### MATÉRIEL NÉCESSAIRE / TOOLS NEEDED

(non fourni / not provided)



Visseuse / perceuse  
Drill / screwdriver



Tournevis cruciforme  
Crossheaded screwdriver



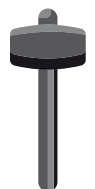
Ciseaux  
scissors



Clé Allen 2,5  
Allen wrench 2,5



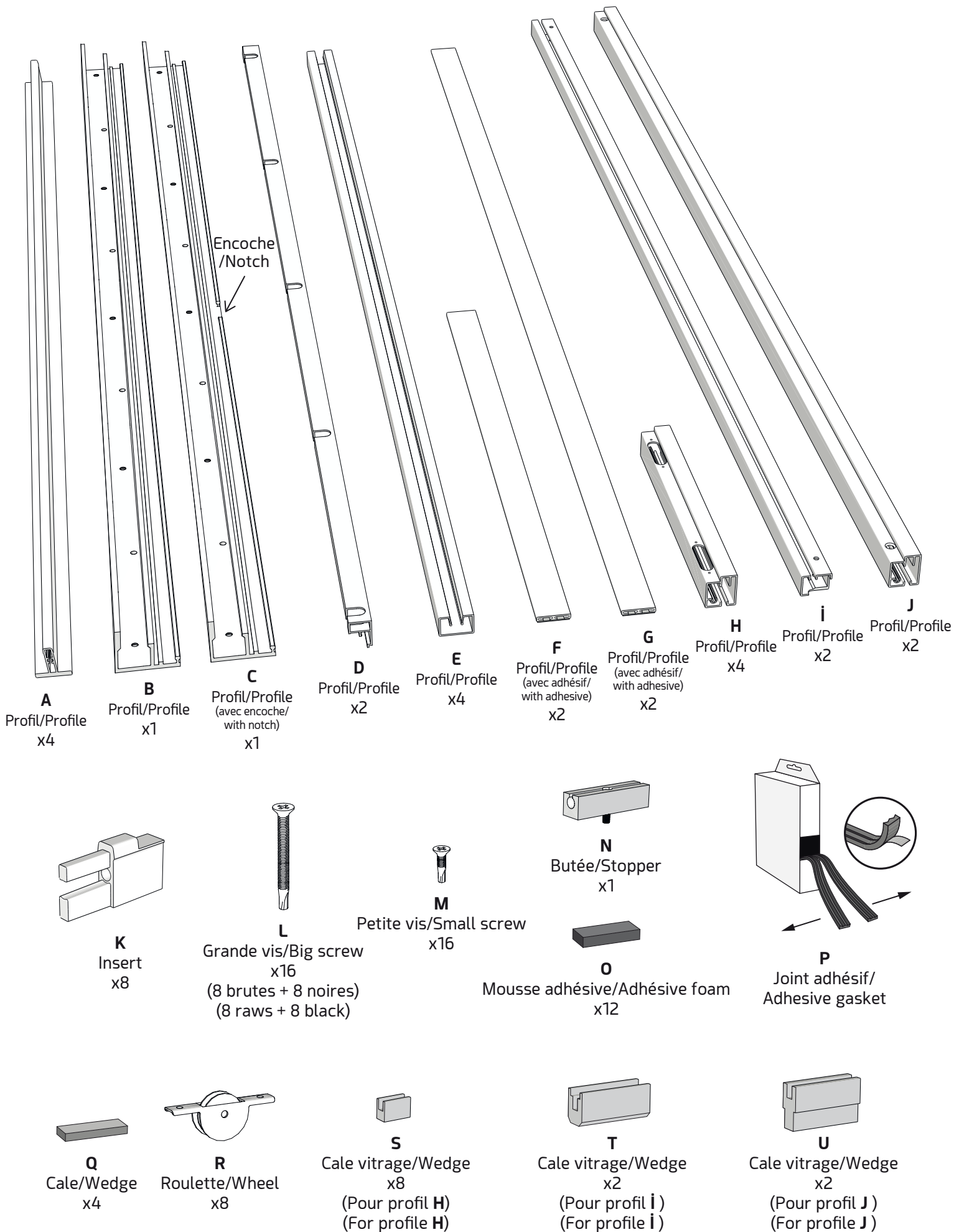
Niveau à bulle  
Spirit level



Maillet  
Mallet



# COMPOSITION DE VOTRE COLIS / COMPOSITION OF YOUR PACKAGE

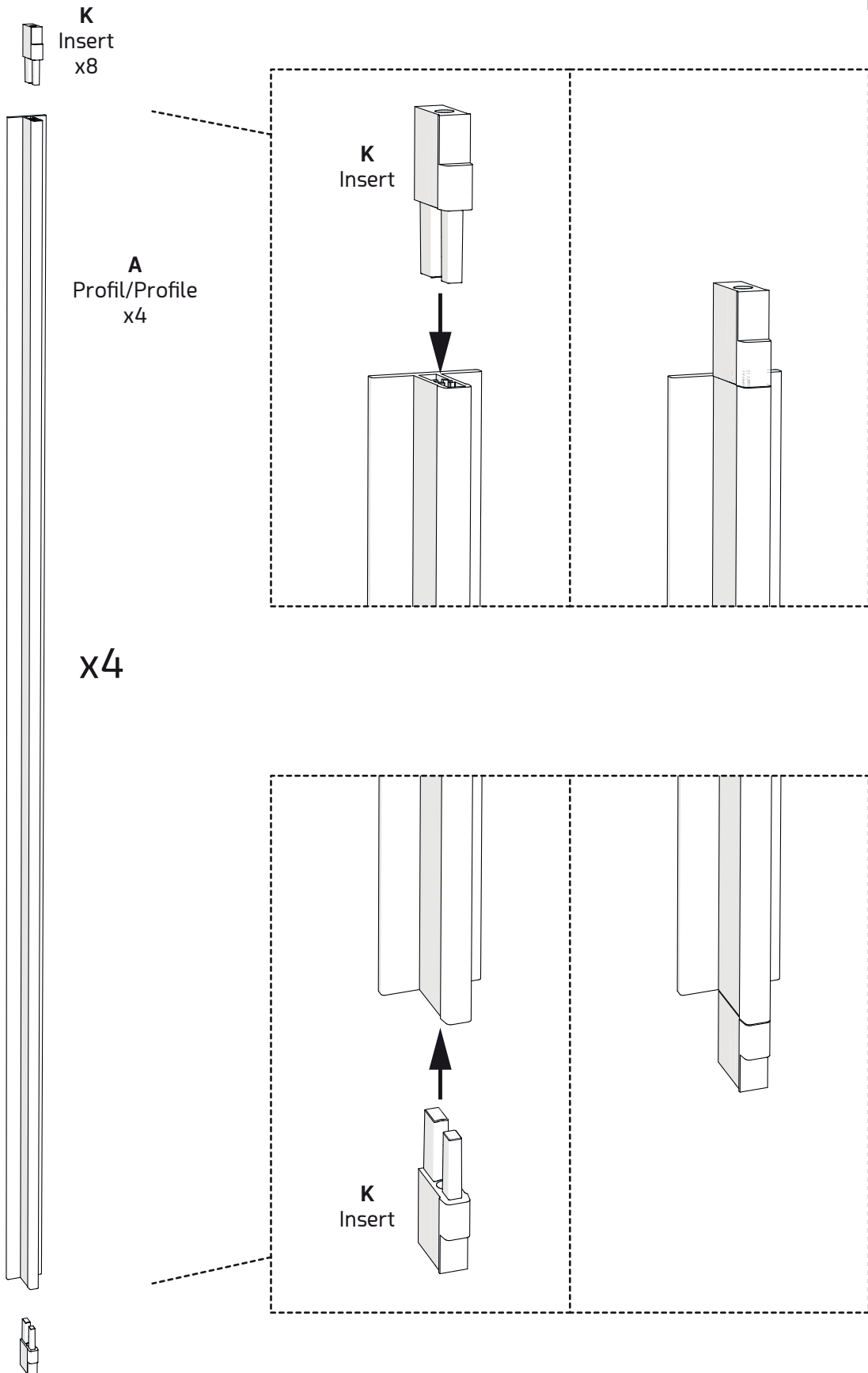


**ÉTAPE 1** ■ Assemblage profils **A** + inserts **K**

**STEP 1** ■ Assembly profiles **A** + inserts **K**

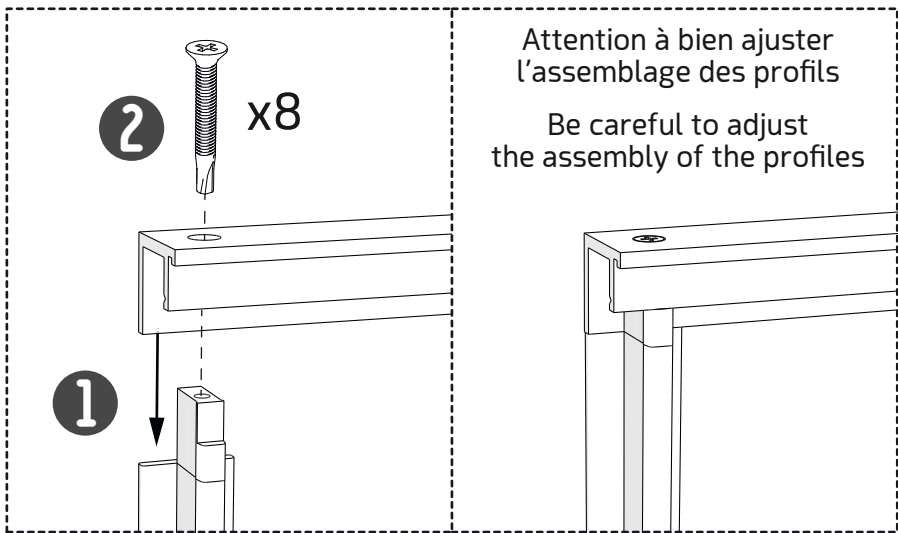
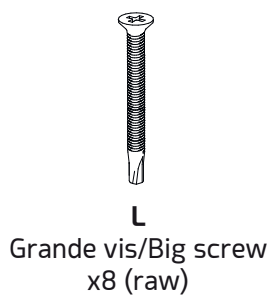
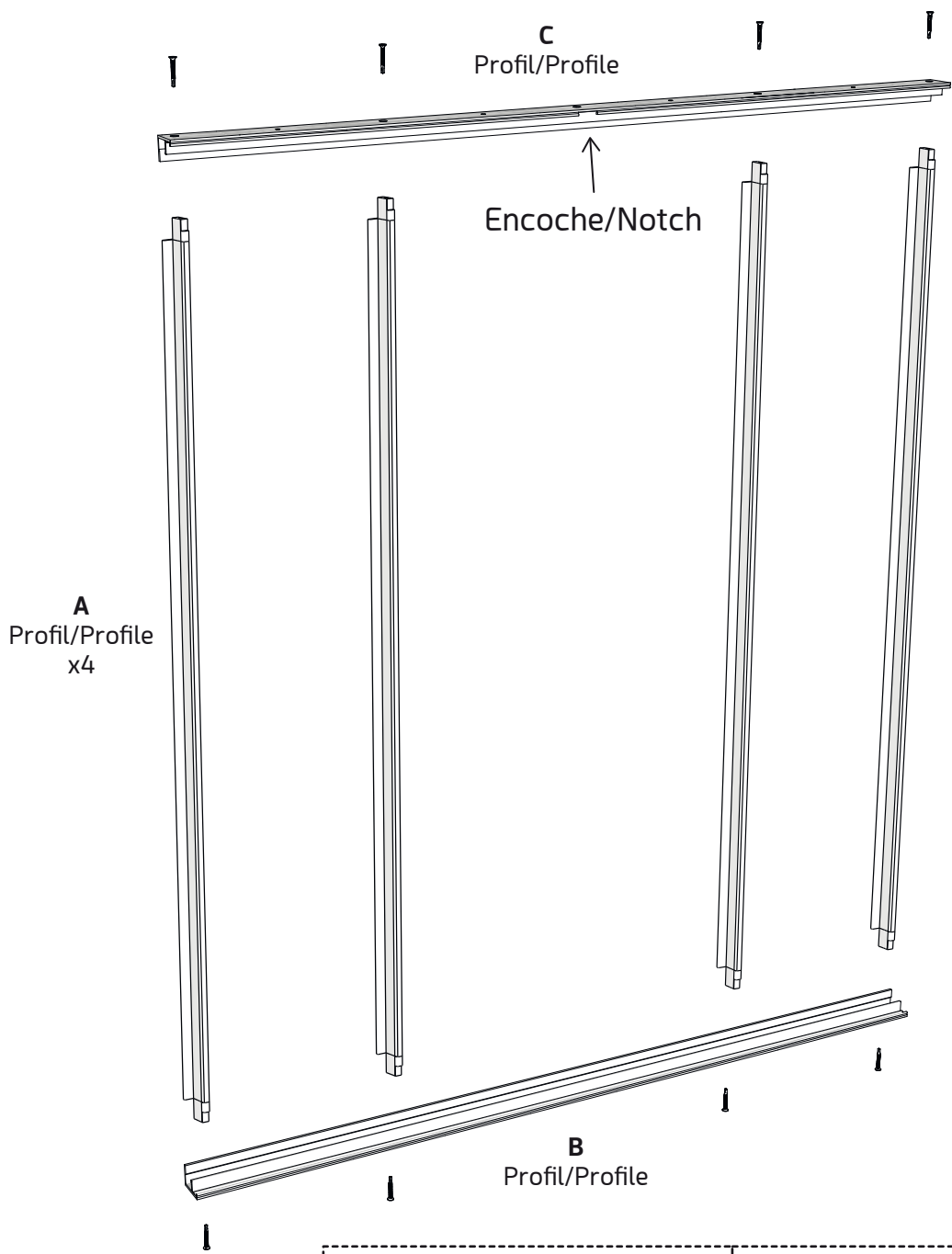


Maillet  
Mallet



## ÉTAPE 2 ■ Assemblage des profils A + profil B + profil C

## STEP 2 ■ Assembly profiles A + profile B + profile C

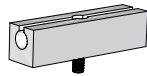
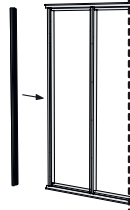


## ÉTAPE 3 ■ Butée N - Pose des mousses O

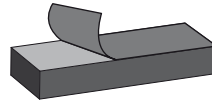
### STEP 3 ■ Stopper N - Installation of foams O

Pour l'installation d'un poteau de terminaison, suivez la notice présente sur son emballage. (Installation à effectuer avant la pose des mousses)

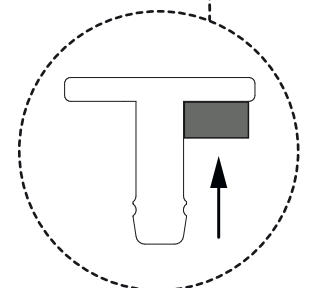
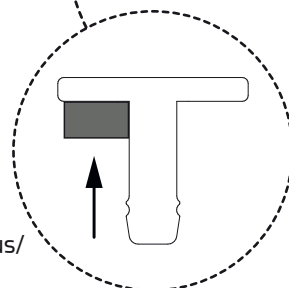
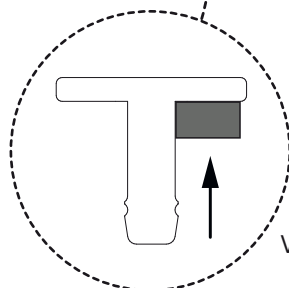
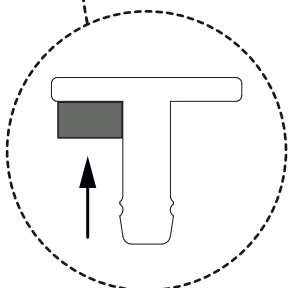
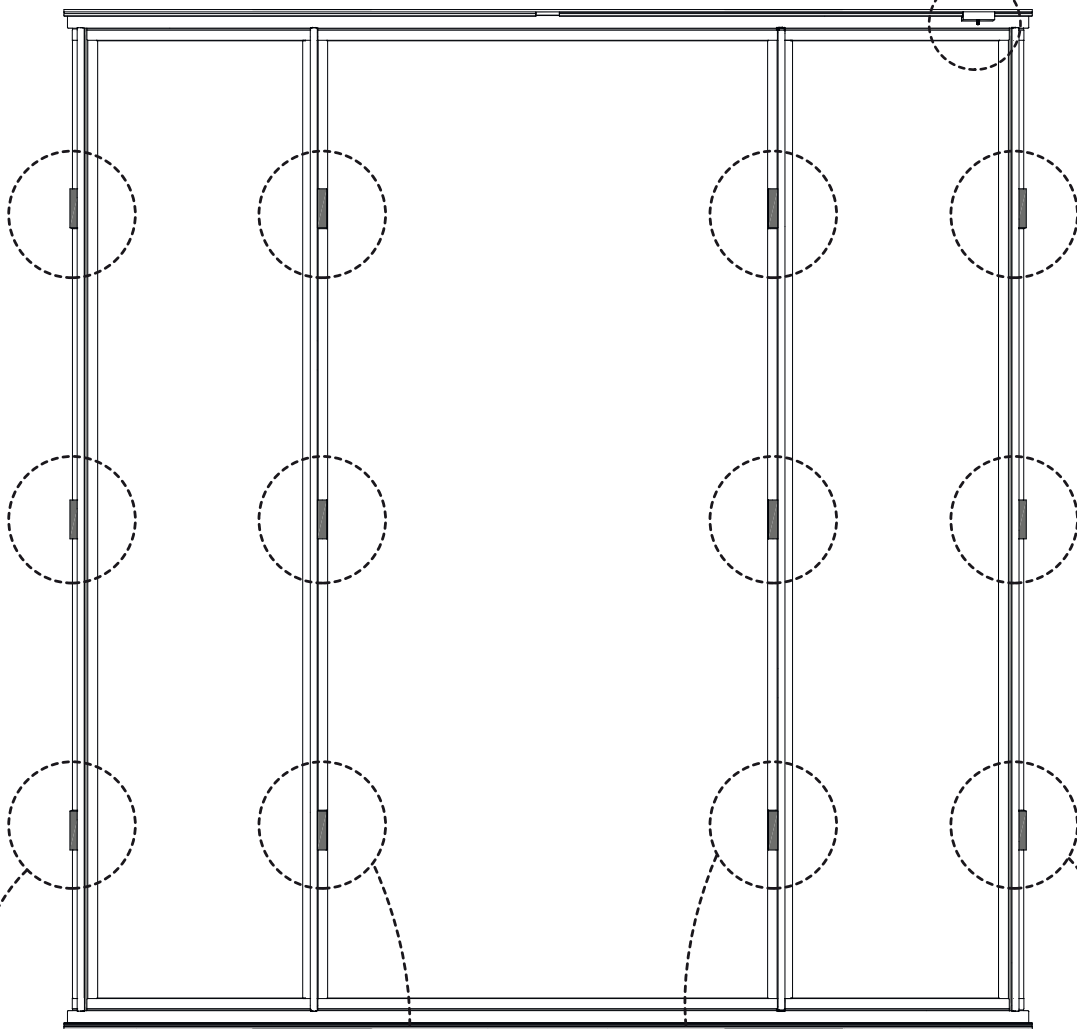
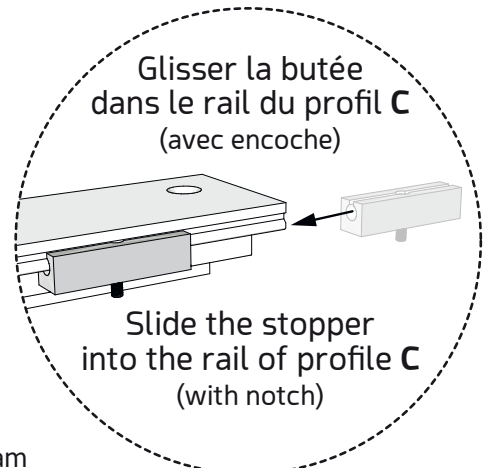
For installation of a termination angle, please follow the instructions mentioned on the packaging. (installation to be done before the application of the adhesive foams)



**N**  
Butée/Stopper  
x1



**O**  
Mousse adhésive/Adhesive foam  
x12

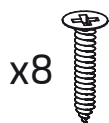
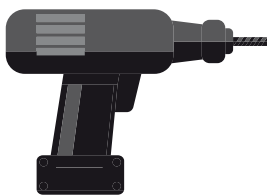
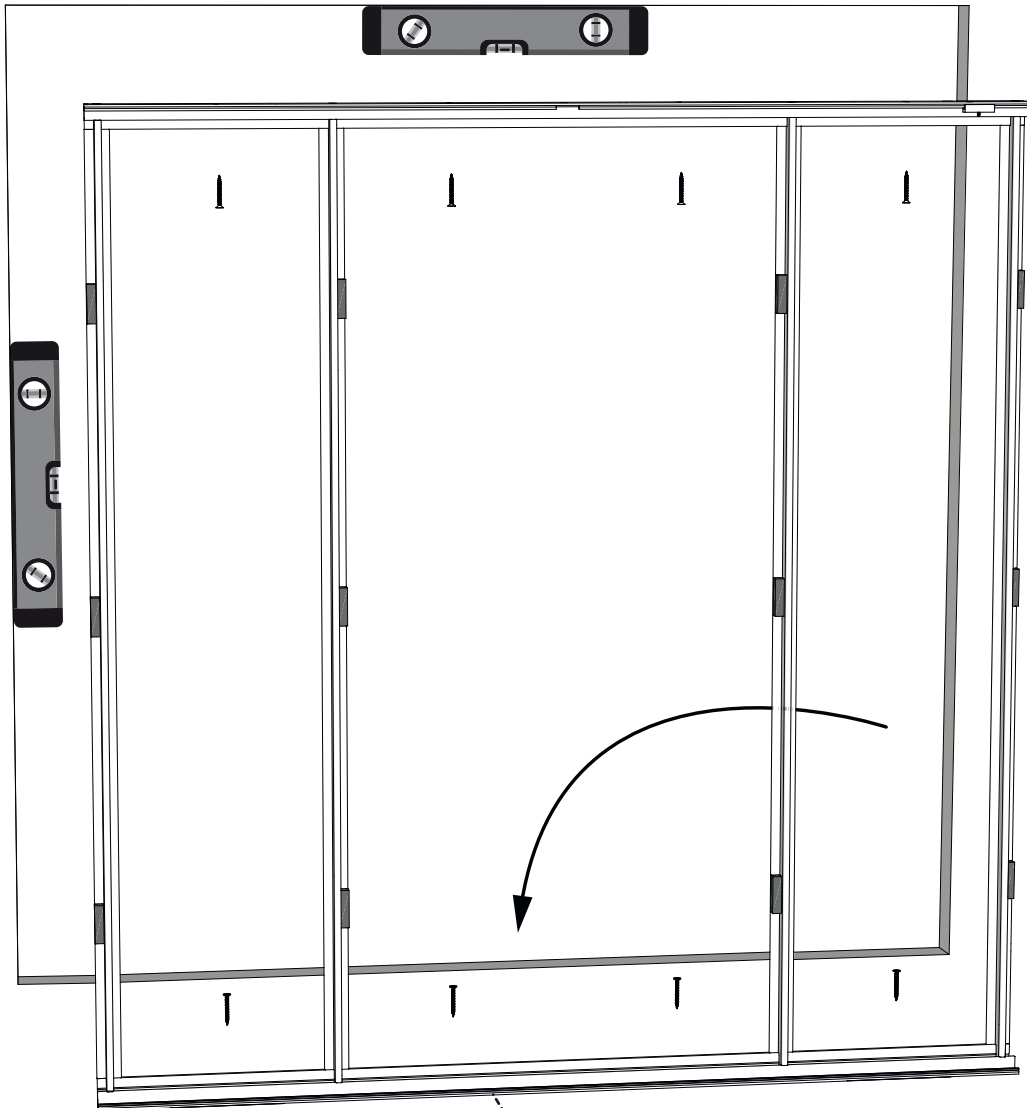


Vue de dessus/  
top view

## ÉTAPE 4 ■ Fixation du châssis

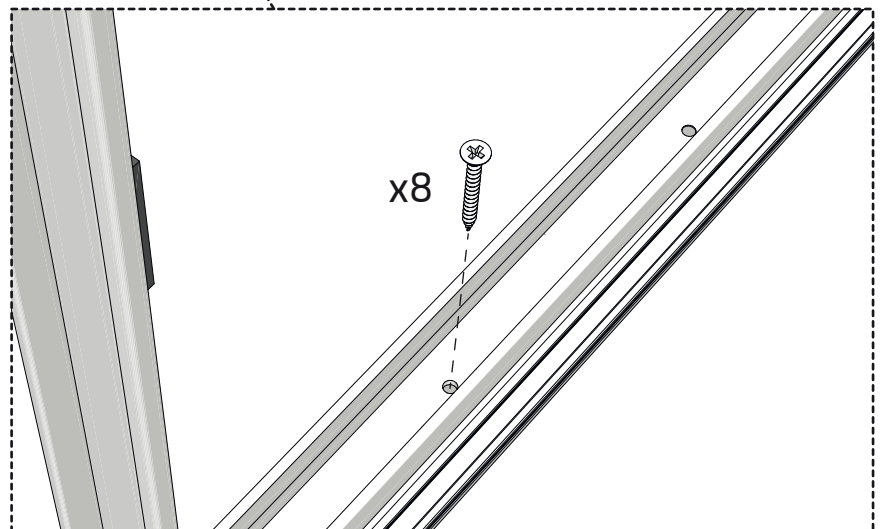
## STEP 4 ■ Fixing the frame

MUR / WALL



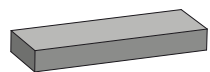
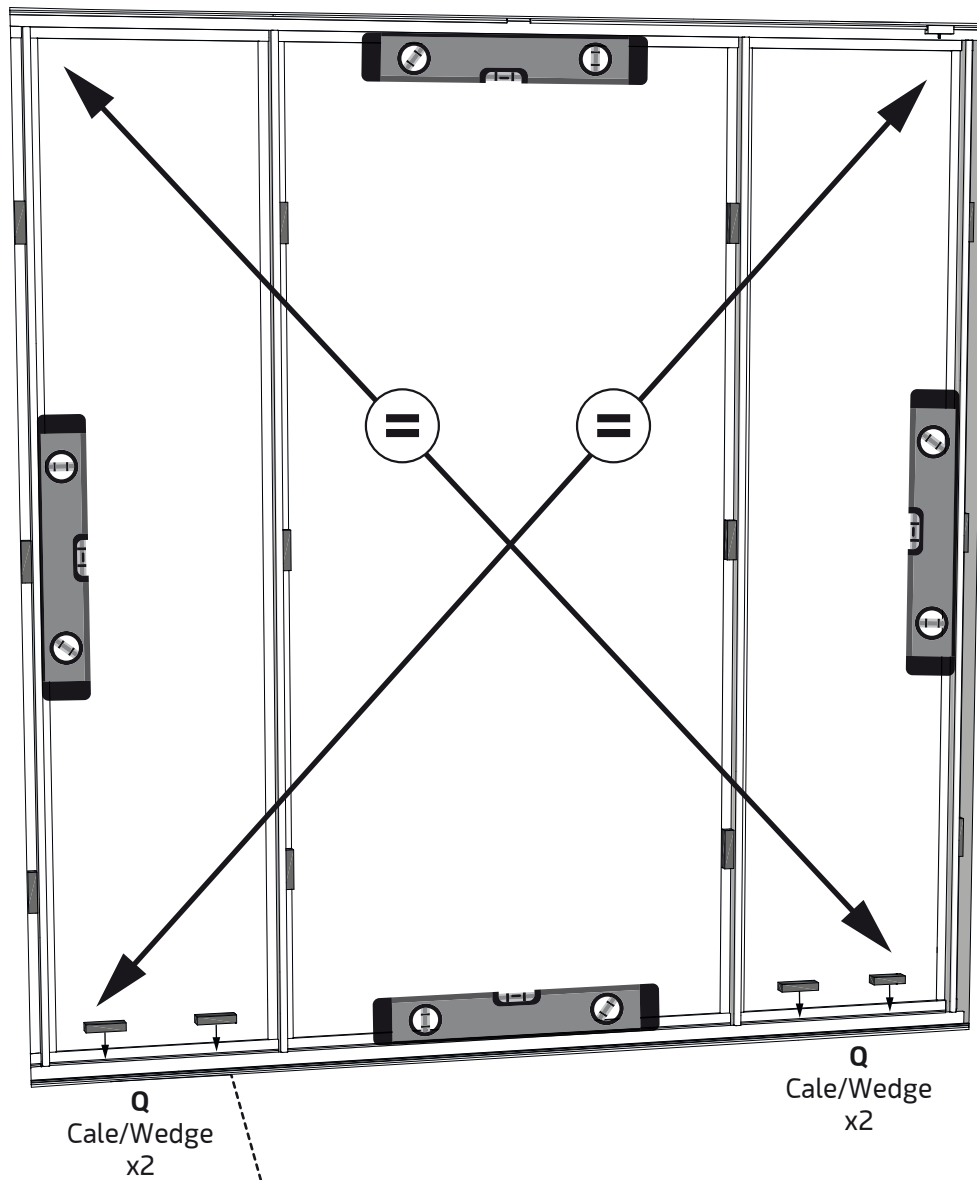
Vis  
(non fournies)  
à adapter selon  
votre support

Screw  
(not provided)  
to adapt accordingly  
to your support

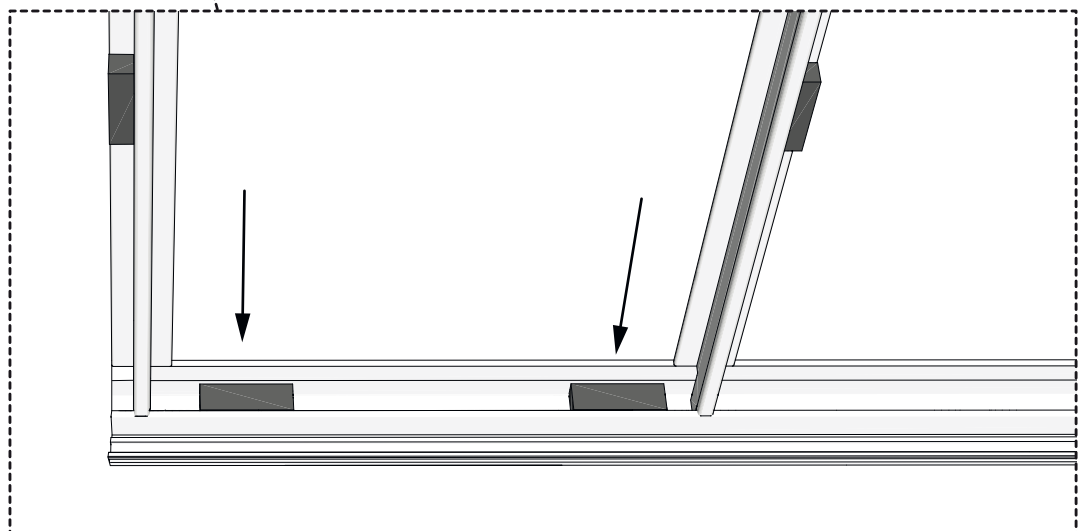


**ÉTAPE 5** ■ Vérification et mise en place des cales Q

**STEP 5** ■ Checking and placement of wedges Q



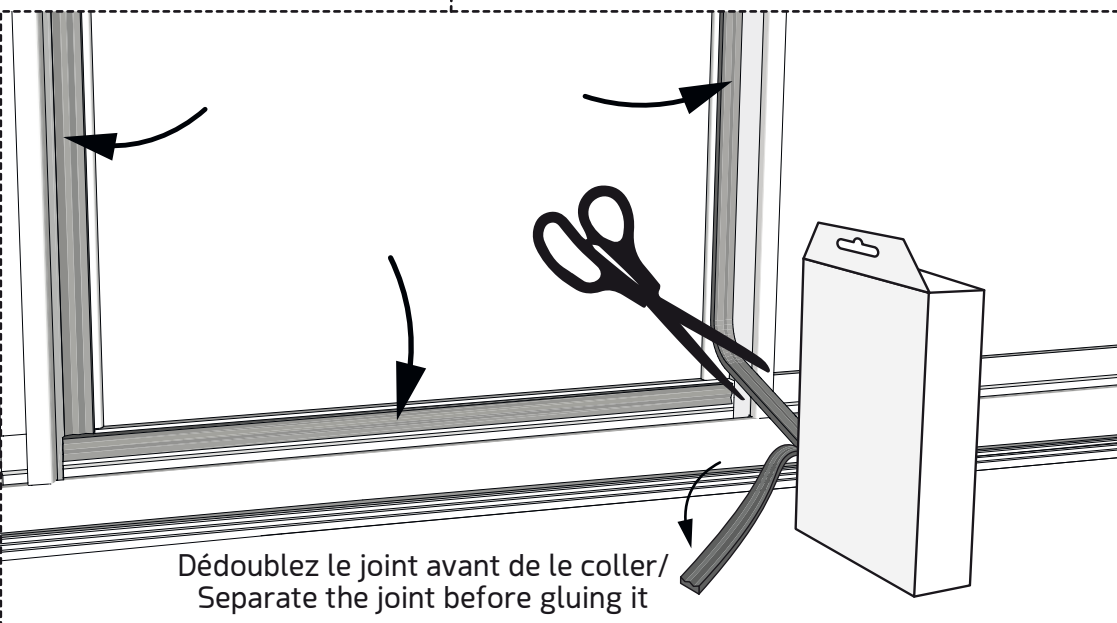
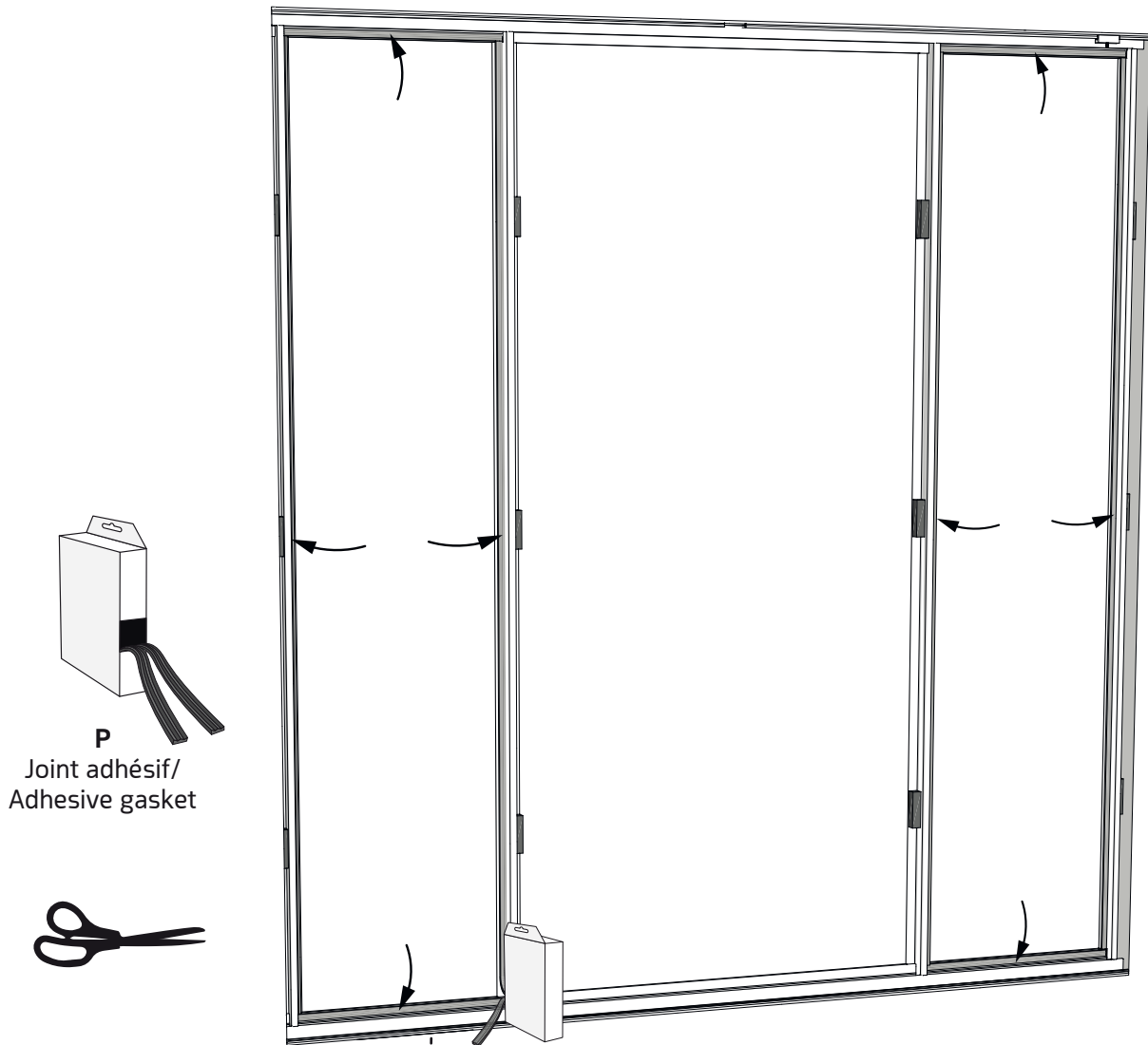
**Q**  
Cale  
x4



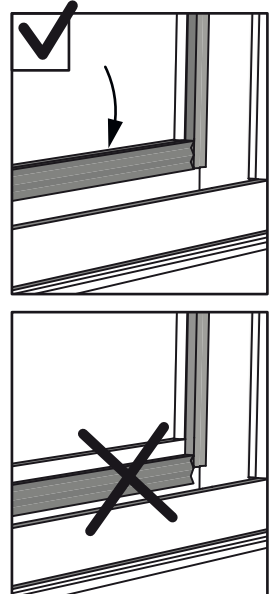


# ÉTAPE 6 ■ Mise en place du joint P

## STEP 6 ■ Installation of the gasket P



⚠  
Alignement / Alignment

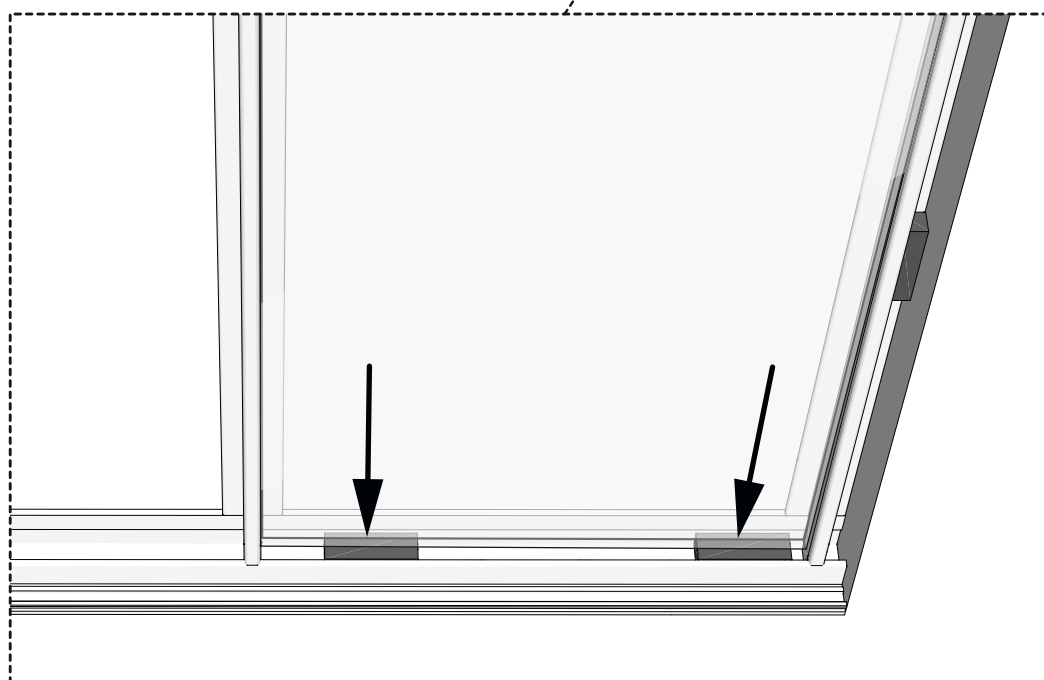


**ÉTAPE 7** ■ Installation du vitrage

**STEP 7** ■ Glass installation

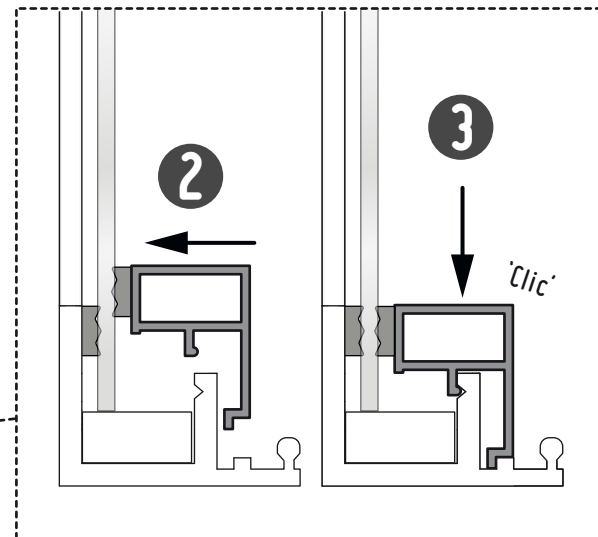
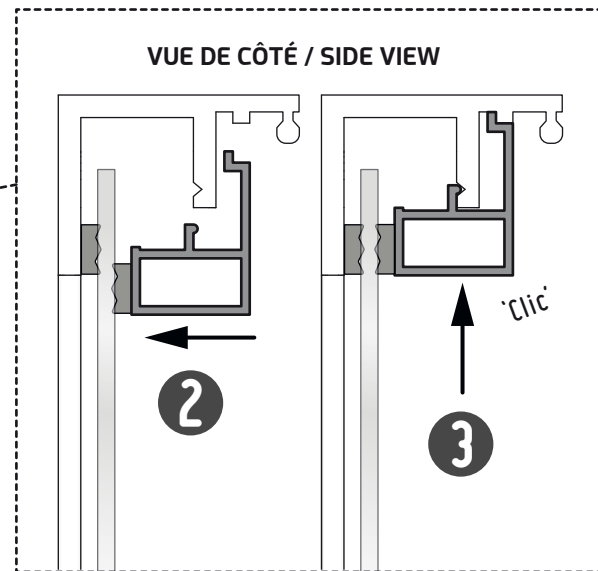
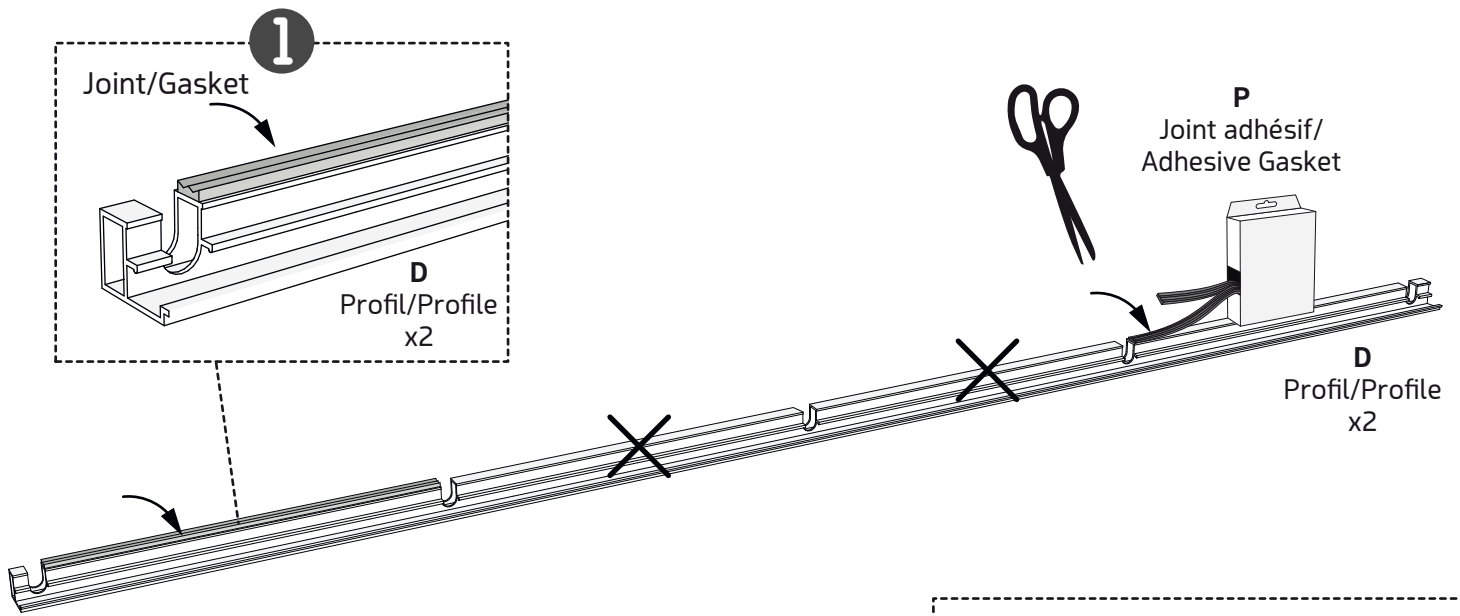


Vitrage/Glass  
x2



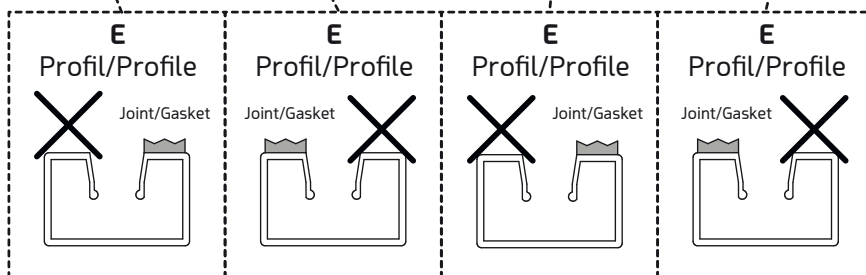
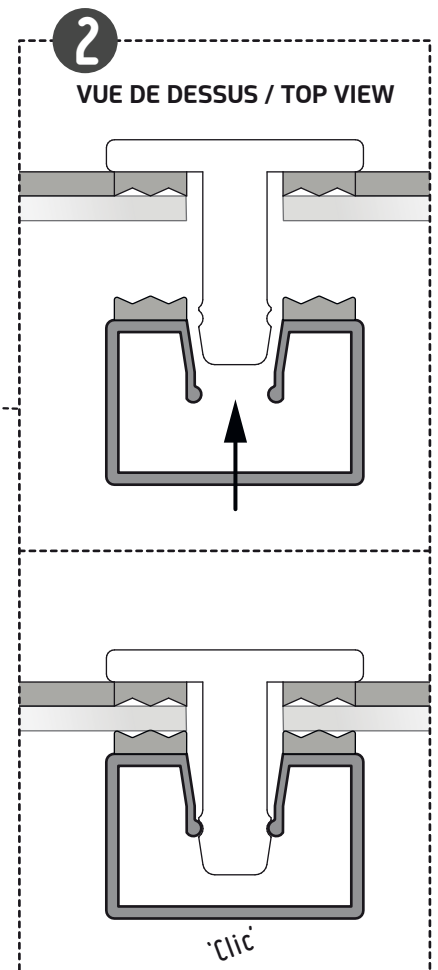
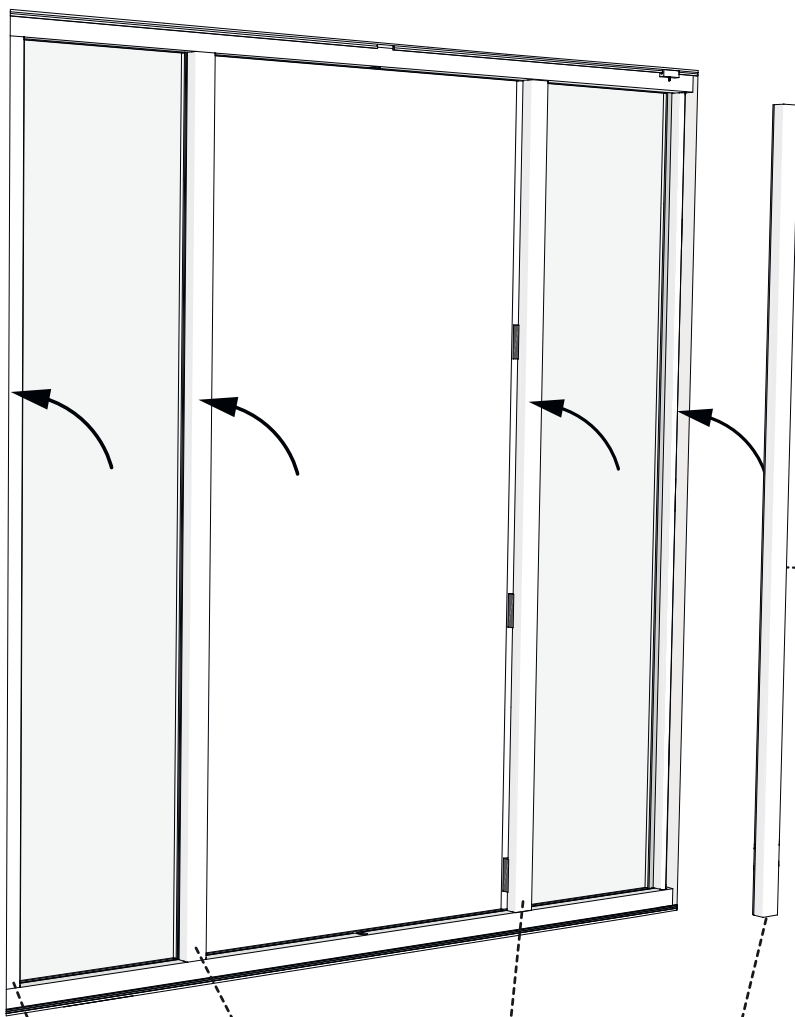
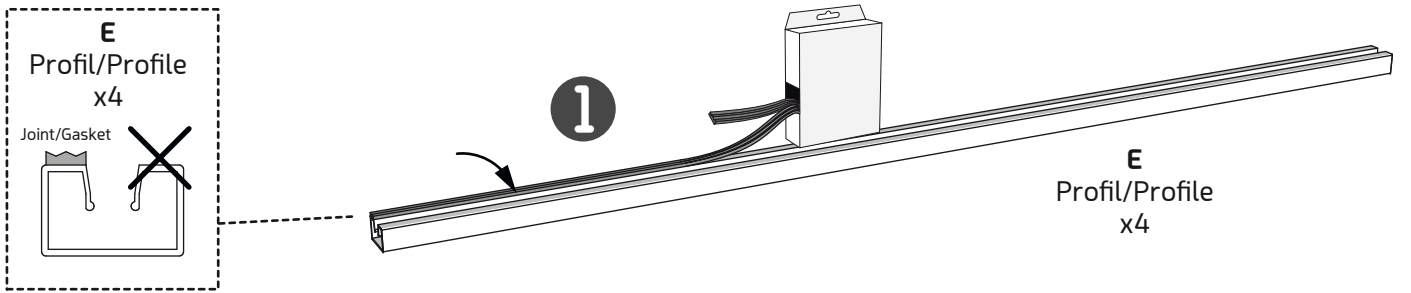
# ÉTAPE 8 ■ Installation des profils D

## STEP 8 ■ Installation of profiles D



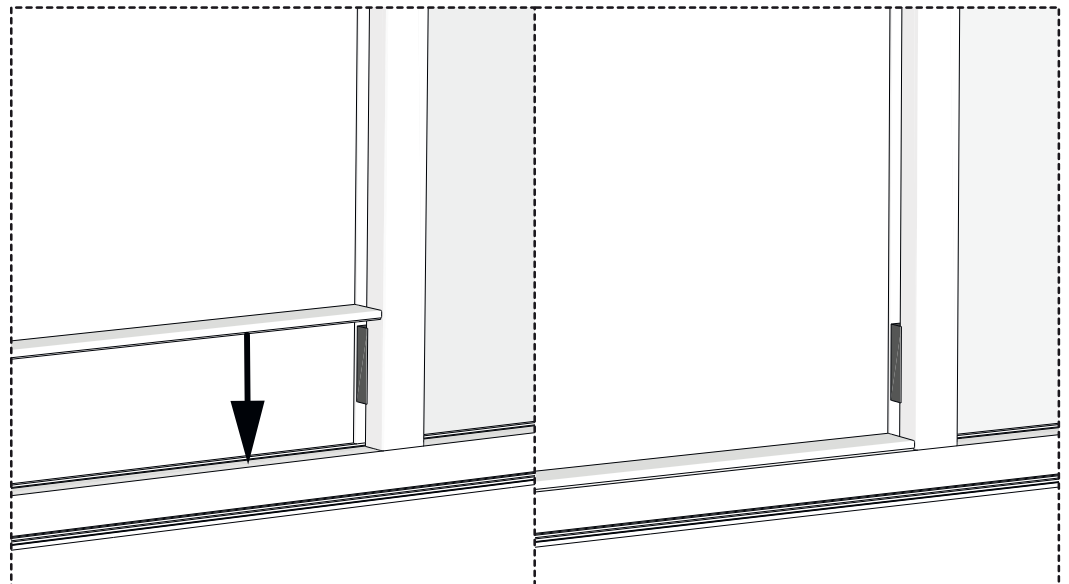
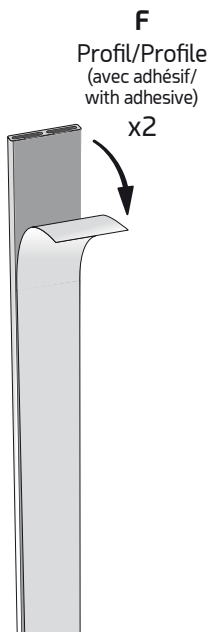
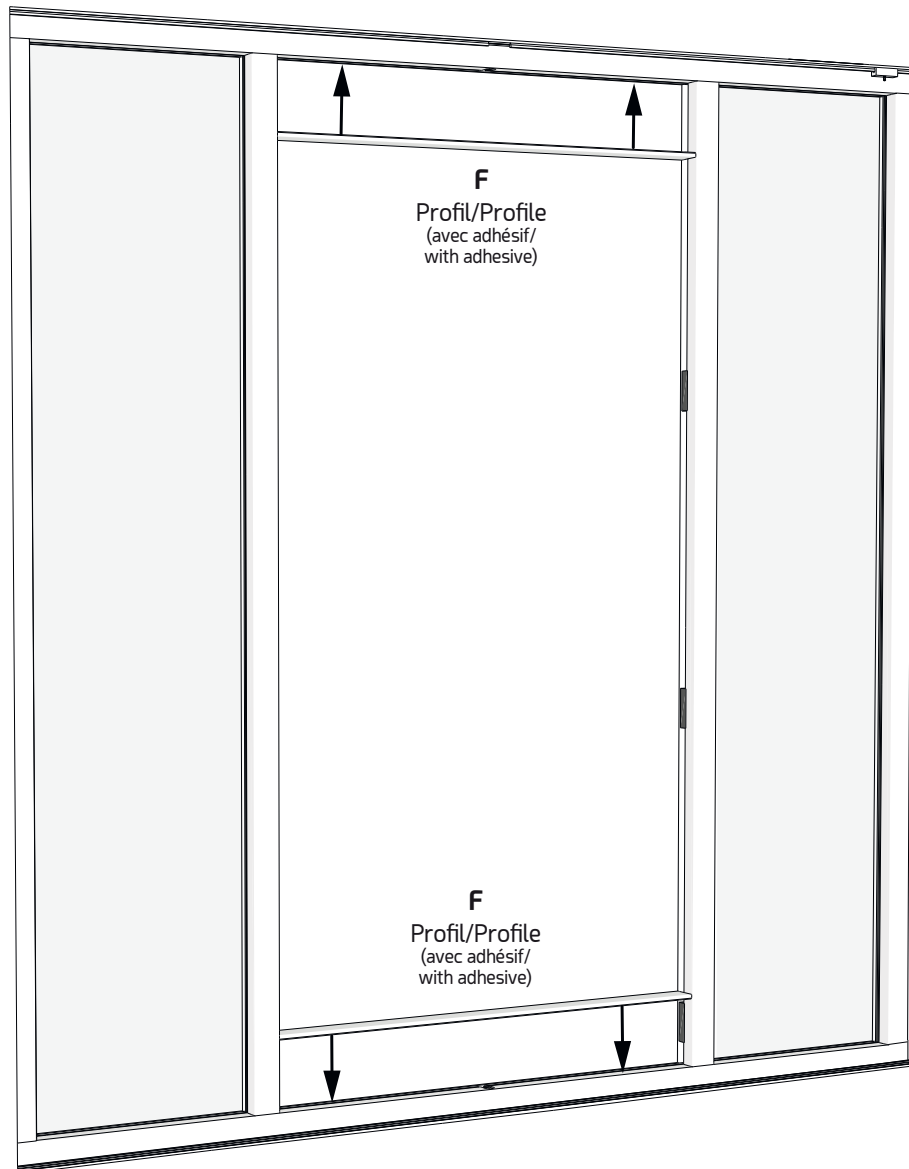
# ÉTAPE 9 ■ Installation des profils E

## STEP 9 ■ Installation of profiles E



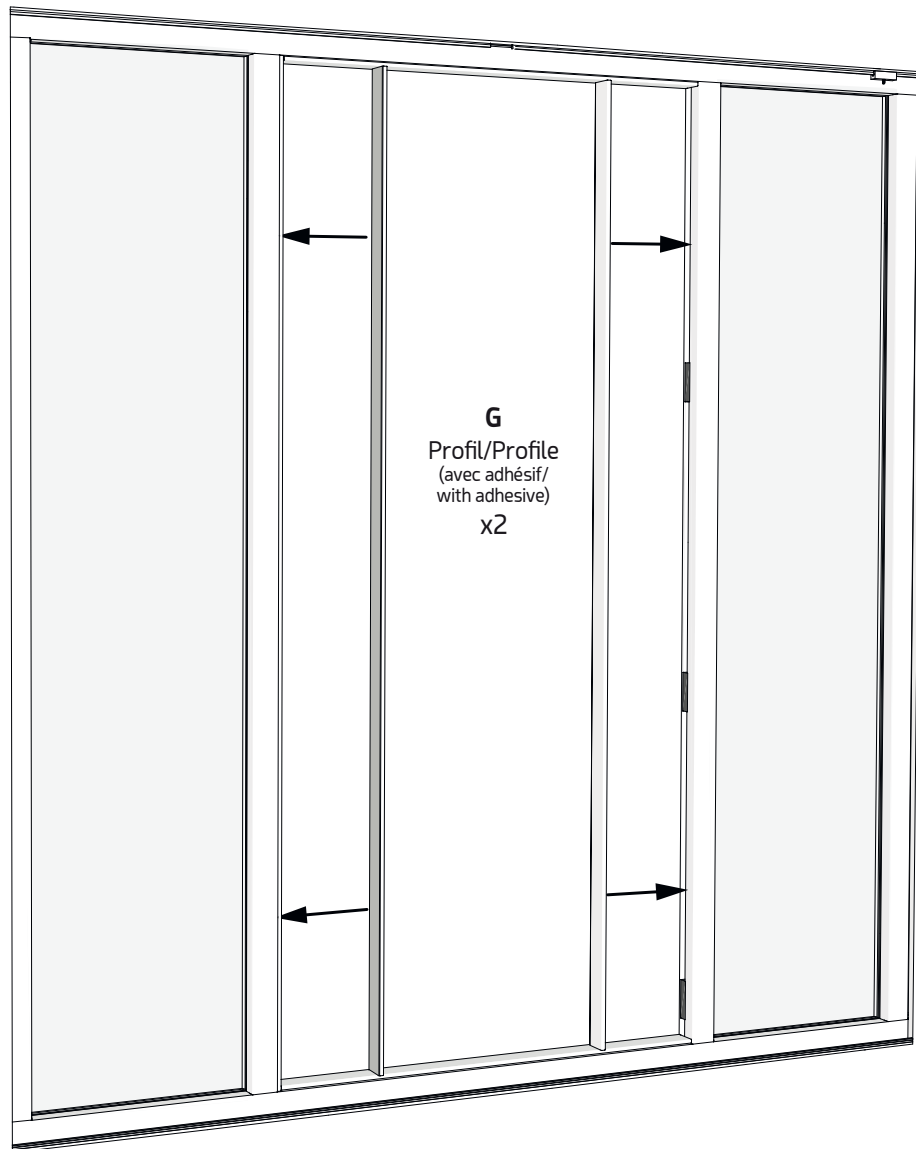
**ÉTAPE 10** ■ Installation des profils **F**

**STEP 10** ■ Installation of profiles **F**

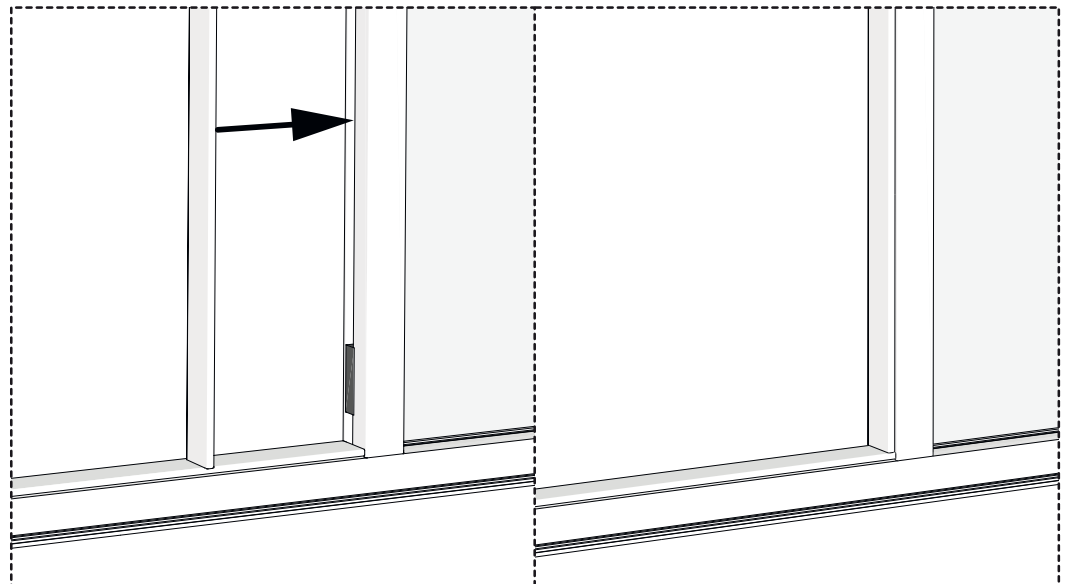
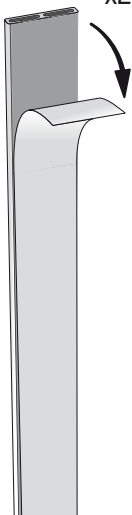


**ÉTAPE 11** ■ Installation des profils **G**

**STEP 11** ■ Installation of profiles **G**



**G**  
Profil/Profile  
(avec adhésif/  
with adhesive)  
x2



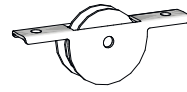
# ÉTAPE 12 ■ Assemblage des profils H + Roulettes R + Cale S

x4

## STEP 12 ■ Assembly of profiles H + Wheel R + Wedge S



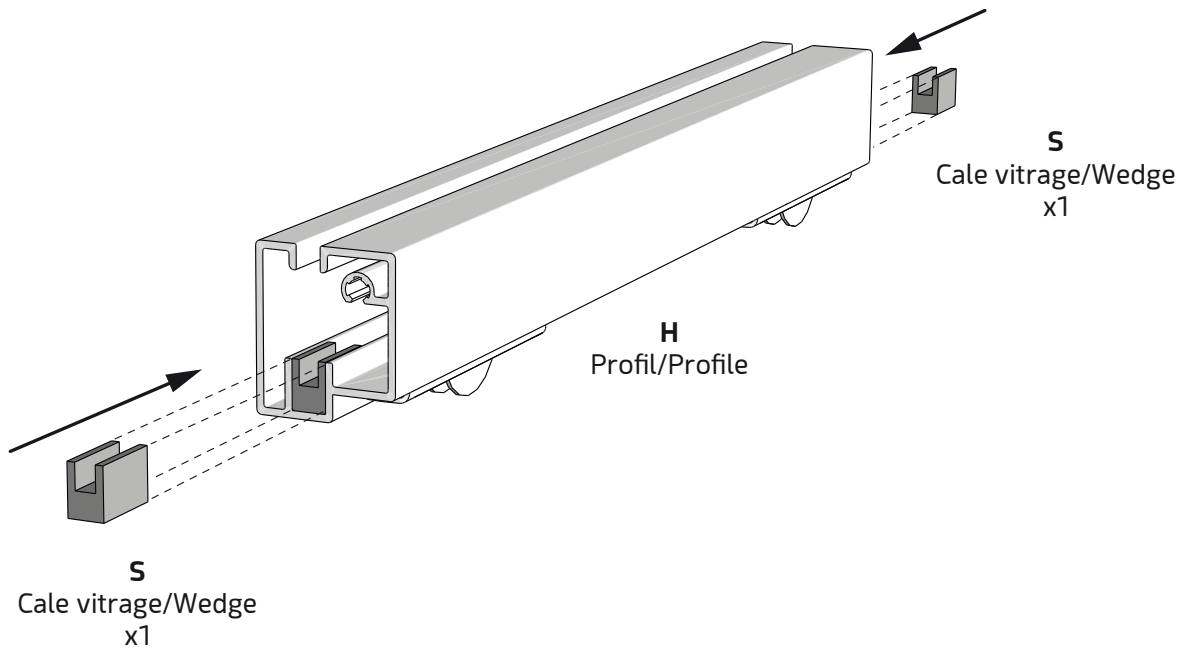
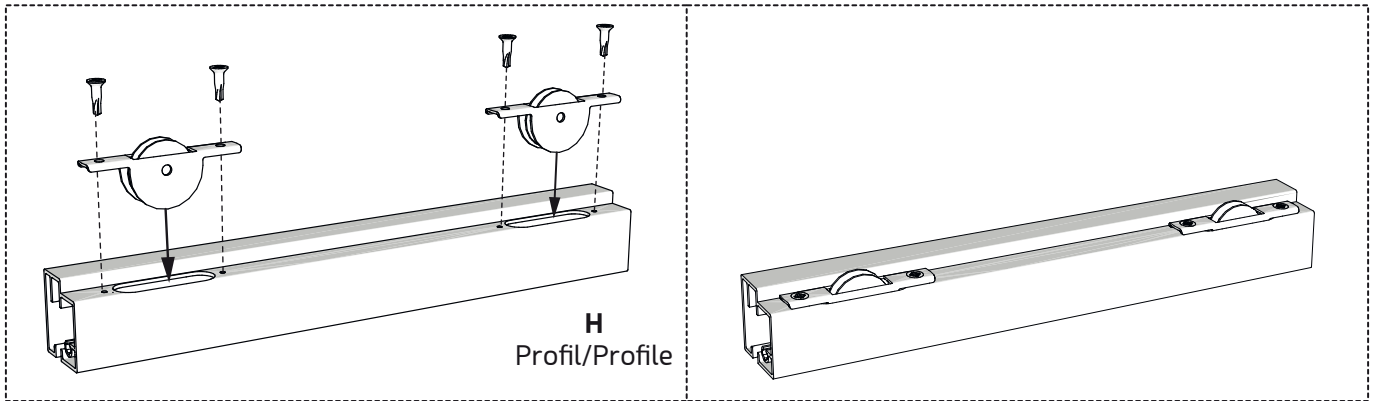
**M**  
Petite vis/Small screw  
x16



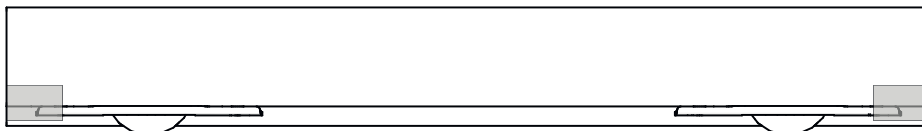
**R**  
Roulette/Wheel  
x8



**S**  
Cale vitrage/Glass wedge  
x8



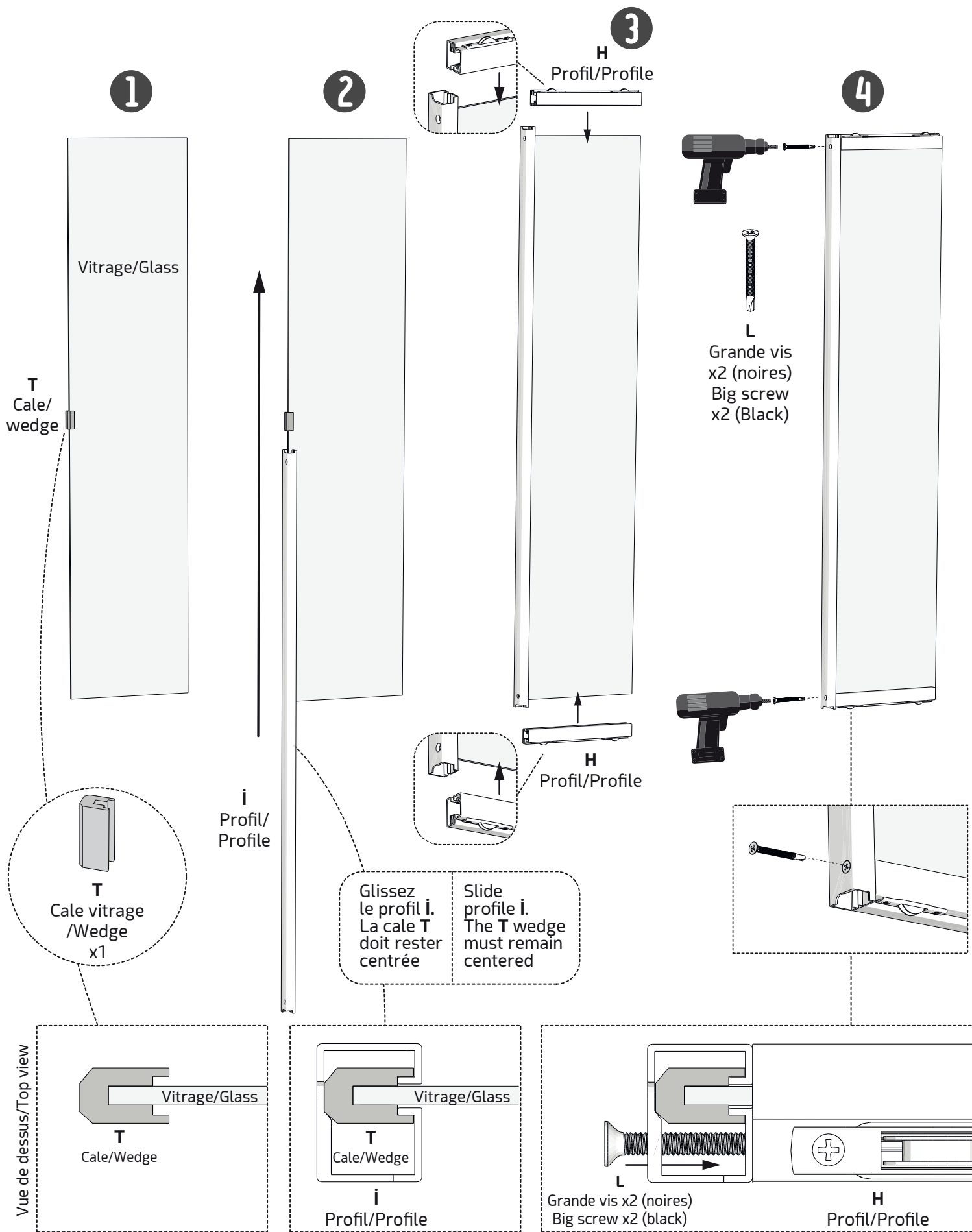
Positionnement des cales à l'intérieur / Positioning of the wedges inside



# ÉTAPE 13 ■ Calage du vitrage avec les cales T dans les profils i

x2

## STEP 13 ■ Fixing glass with the wedges T in the profiles i

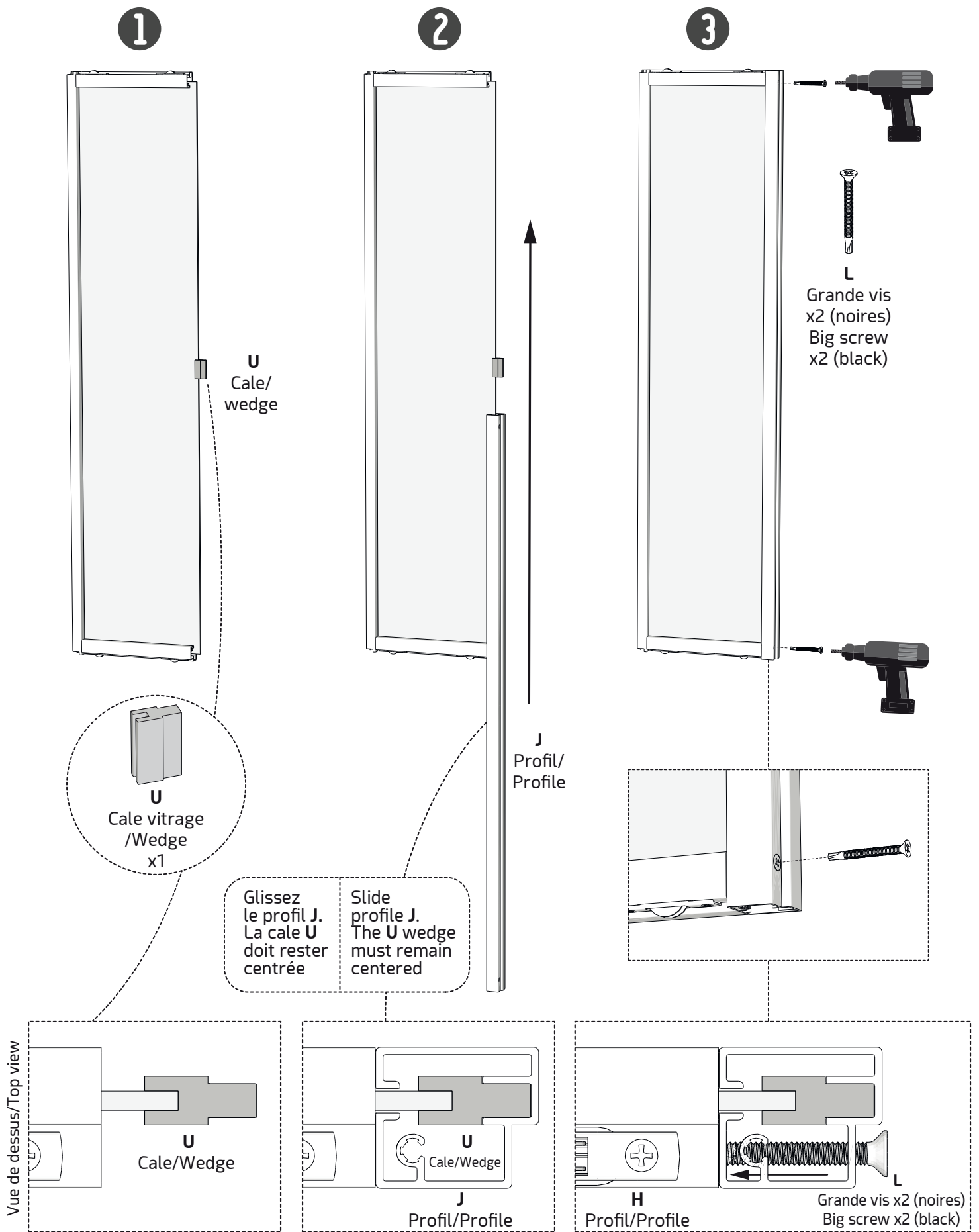




**ÉTAPE 14** ■ Calage du vitrage avec les cales **U** dans les profils **J**

**STEP 14** ■ Fixing glass with the wedges **U** in the profiles **J**

**x2**



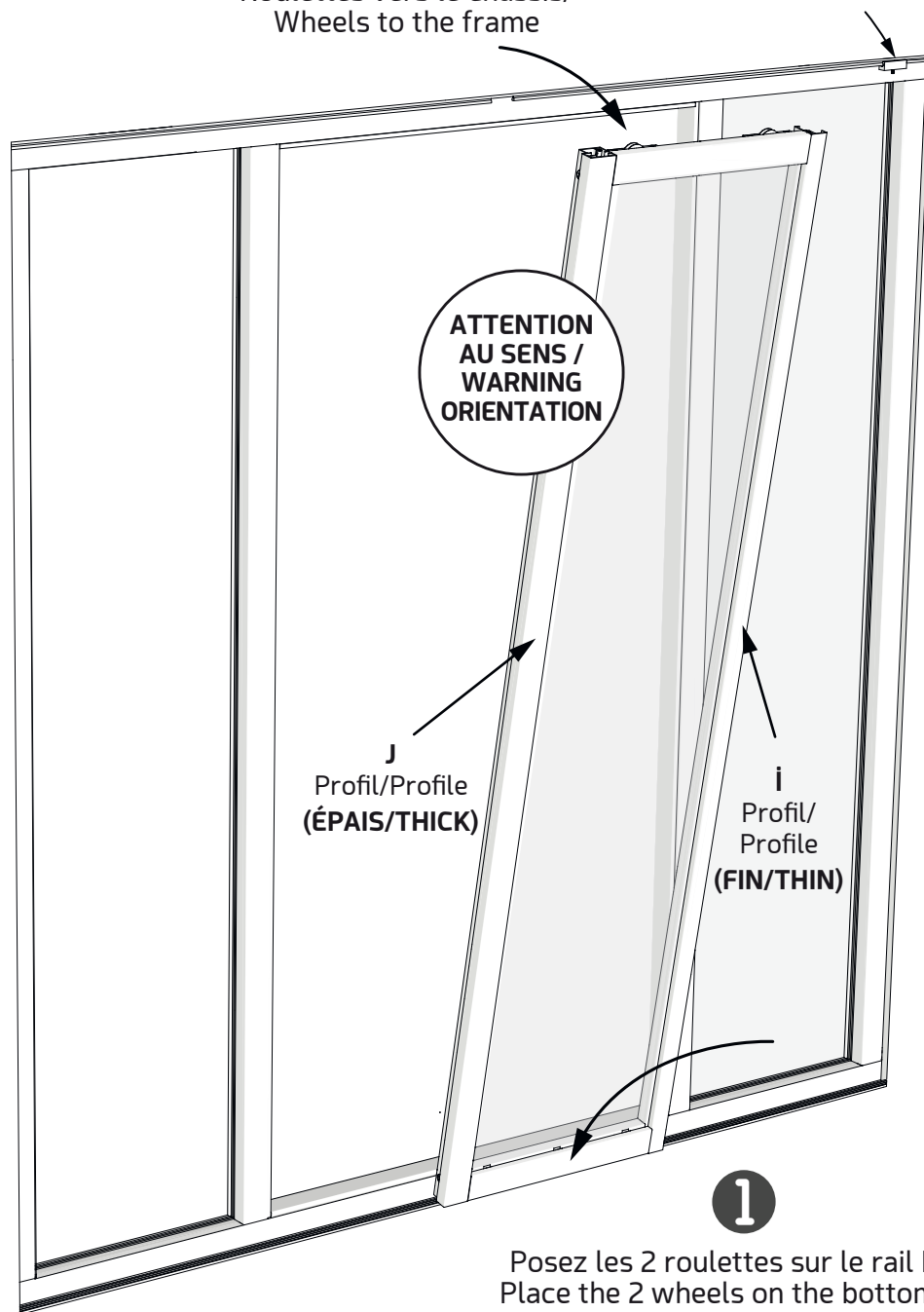
# ÉTAPE 15 ■ Mise en place de la FENÊTRE DE GAUCHE

## STEP 15 ■ Setting up the LEFT WINDOW

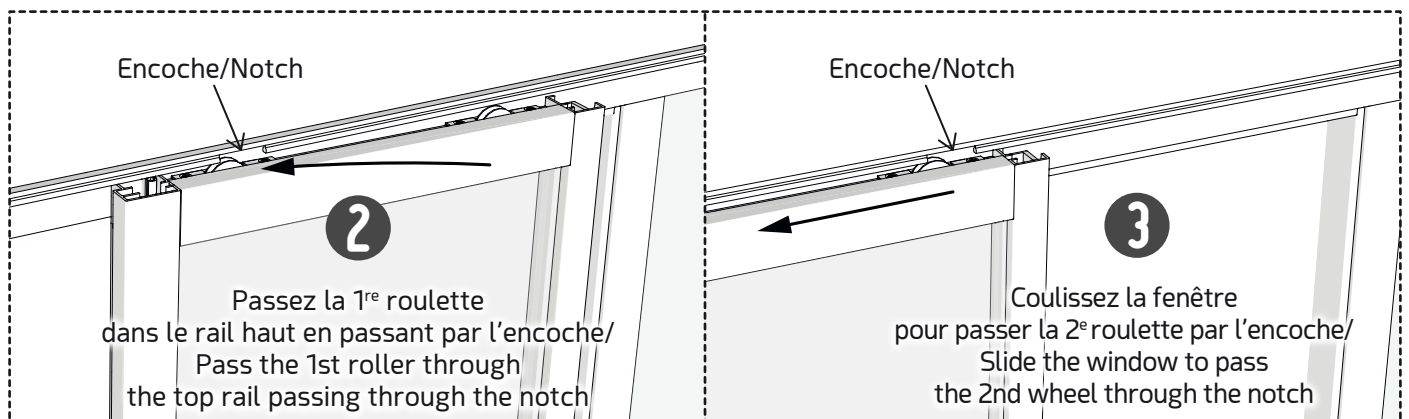


Roulettes vers le châssis/  
Wheels to the frame

Butée à droite/Stopper to the right



1  
Posez les 2 roulettes sur le rail bas/  
Place the 2 wheels on the bottom rail



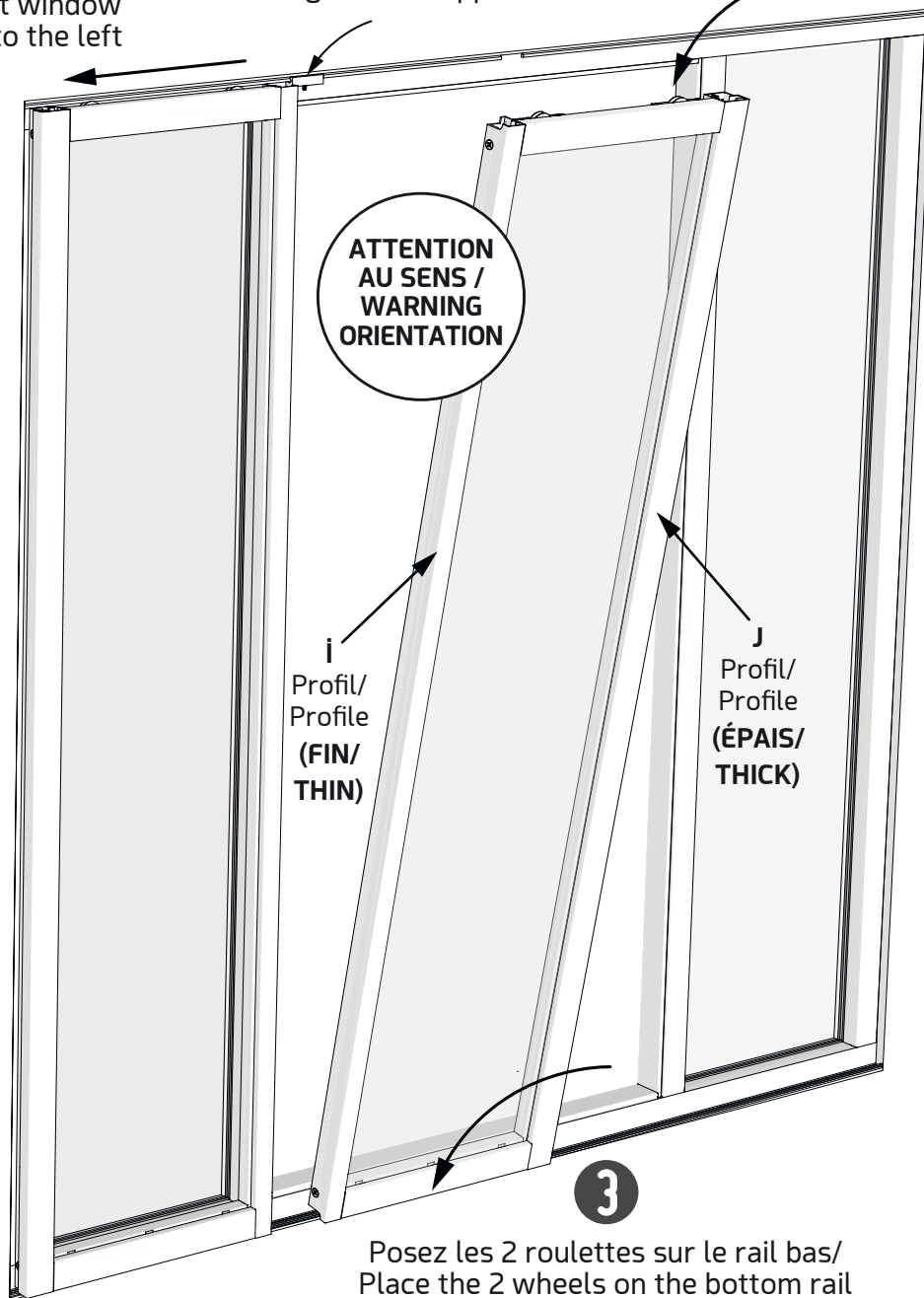
## ÉTAPE 16 ■ Mise en place de la FENÊTRE DE DROITE

## STEP 16 ■ Setting up the RIGHT WINDOW

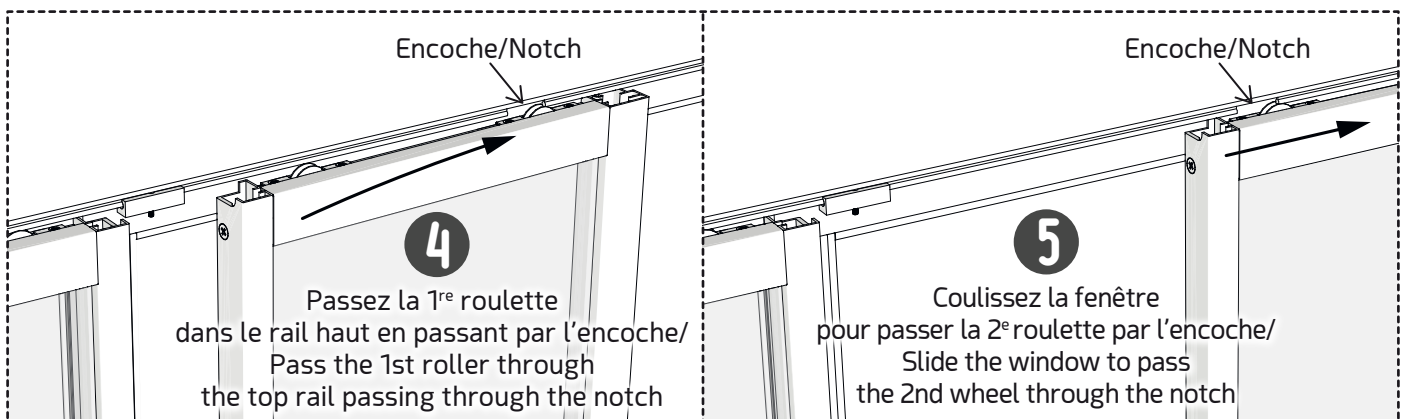
**1** Poussez la fenêtre de gauche complètement à gauche/  
Push the left window all the way to the left

**2**  Butée à gauche/Stopper to the left

Roulettes vers le châssis/  
Wheels to the frame

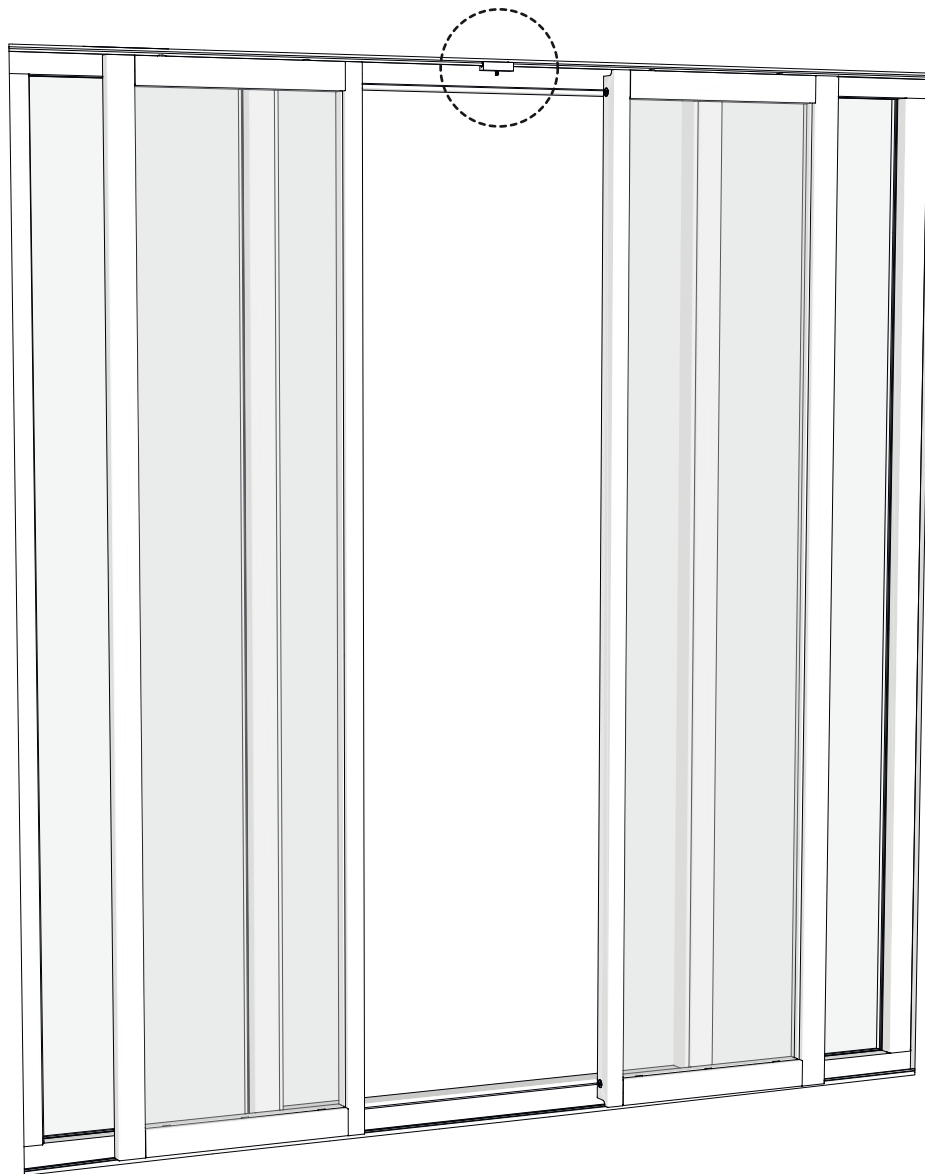


**3** Posez les 2 roulettes sur le rail bas/  
Place the 2 wheels on the bottom rail



**ÉTAPE 17** ■ Mise en place de la butée

**STEP 17** ■ Installation of the stopper



Clé Allen 2,5  
Allen wrench 2,5

