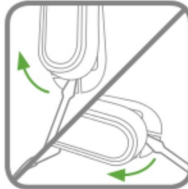
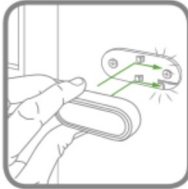
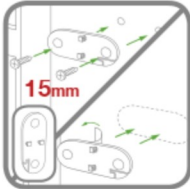
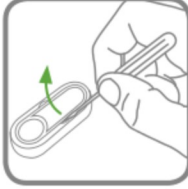
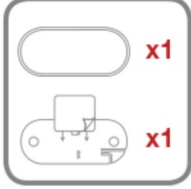
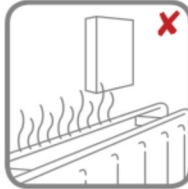
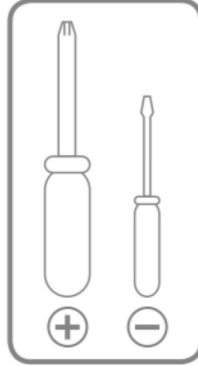
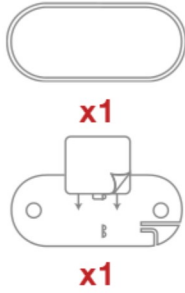


Honeywell

DC311XXP2/BS
DC313XXP2/BS



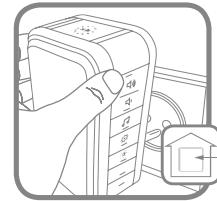
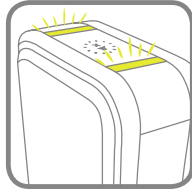
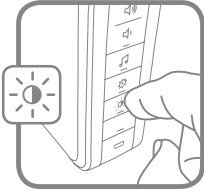
DE Contents ES Inhalt FR Contenu HU Tartalom IT Contenuto ES Contenido PT Conteúdo
GR Περιεχόμενα SE Innehåll

EN Getting started DE Erste Schritte FR Démarrage HU Aan de slag P Albitusopas DK Kom i gang
IT Operazioni preliminari ES Para empezar PT Para começar GR Πρώτα βήματα SE Kom igång

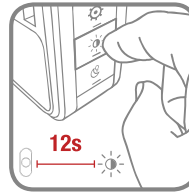
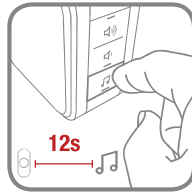
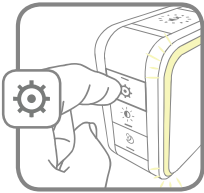
GB Optional features **DE** Optionale Funktionen
 FR Options disponibles **NL** Opties **F** Valinnaiset ominaisuudet
 DK Valgfrie funktioner **I** Funzionalità opzionali
 ES Opciones disponibles **TR** Fonksiyonlar opsiyonel
 Προαιρετικές λειτουργίες πρόσθετων **SE** Möjliga funktioner



	Hello	Ding Dong	Westminster	Marimba	Piano	Bell	Telephone	Soft Alert
	•	•					•	•
	•	•	•	•			•	•
	•	•	•	•	•	•	•	•



GB Linking **DE** Einlernen **FR** Programmation
 NL Verknüpfung **F** Linkittäminen **DK** Forbinde
 Collegamento **ES** Enlace
 Programação **GR** Ουδέσση **SE** Länkning



GB Trouble shooting **DE** Fehlerbehebung **FR** Dépannage **NL** Probleemoplossing
 FI Vianmääritys **DK** Problemløsning **I** Risoluzione dei problemi **ES** Solución de
 problemas **PT** Resolução de problemas **GR** Αντιμετώπιση προβλημάτων **SE** Felsökning

livewell.honeywell.com



32305353-001 Rev.A