

**5059340005539**  
**5059340005188**

V30920 BX220IM



**EN** **IMPORTANT** - These instructions are for your safety. Please read them thoroughly before use and retain for future reference.

**FR** **IMPORTANT** - Ces consignes concernent votre sécurité. Lire attentivement ces instructions avant toute utilisation et les conserver pour référence.

**PL** **WAŻNE** — Niniejsze instrukcje zostały opracowane w celu zapewnienia bezpieczeństwa użytkownika. Należy je dokładnie przeczytać przed użyciem produktu i zachować do widoku w przyszłości.

**DE** **WICHTIG**: Diese Anleitung dient Ihrer Sicherheit. Lesen Sie diese vor der Verwendung aufmerksam durch, und bewahren Sie sie anschließend sorgfältig auf.

**RO** **IMPORTANT** – Aceste instrucțiuni sunt pentru siguranța dvs. Vă rugăm să le citiți cu atenție înainte de utilizare și să le păstrați pentru consultări viitoare.

**ES** **IMPORTANTE**: Estas instrucciones son para su propia seguridad. Léelas atentamente antes de usar el producto y guárdelas para referencia futura.

**PT** **IMPORTANTE** - Estas instruções são para sua segurança. Leia-as atentamente antes da utilização e guarde-as para referência futura.

**TR** **ÖNEMLİ** - Bu talimatlar güvenliğinizi için hazırlanmıştır. Kullanmadan önce lütfen bunları dikkatlice okuyun ve ileride başvurmak üzere saklayın.



**EN** Safety  
**RO** Siguranță

**FR** Sécurité  
**ES** Seguridad

**PL** Bezpieczeństwo  
**PT** Segurança

**DE** Sicherheit  
**TR** Emniyet



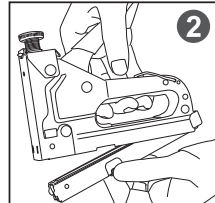
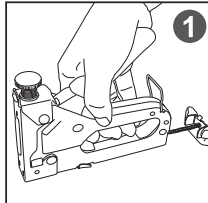
**EN** Use  
**RO** Utilizare

**FR** Utilisation  
**ES** Uso

**PL** Użytkowanie  
**PT** Utilização

**DE** Benutzung  
**TR** Kullanım

**01**



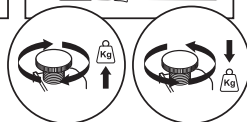
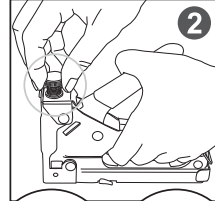
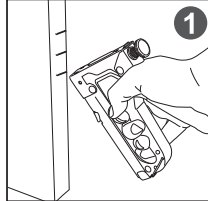
**EN** Use  
**RO** Utilizare

**FR** Utilisation  
**ES** Uso

**PL** Użytkowanie  
**PT** Utilização

**DE** Benutzung  
**TR** Kullanım

**02**



148x135mm

**Manufacturer • Fabricant • Producent •  
Producător • Fabricante:**

**UK Manufacturer:**

Kingfisher International Products Limited,  
3 Sheldon Square, London, W2 6PX,  
United Kingdom

**EU Manufacturer:**

Kingfisher International Products B.V.  
Rapenburgerstraat 175E  
1011 VM Amsterdam  
The Netherlands  
[www.kingfisher.com/products](http://www.kingfisher.com/products)

EN

[www.diy.com](http://www.diy.com)  
[www.screwfix.com](http://www.screwfix.com)  
[www.screwfix.ie](http://www.screwfix.ie)

**To view instruction manuals online,  
visit [www.kingfisher.com/products](http://www.kingfisher.com/products)**

FR

[www.castorama.fr](http://www.castorama.fr)  
[www.bricodepot.fr](http://www.bricodepot.fr)

**Pour consulter les manuels  
d'instructions en ligne,  
rendez-vous sur le site  
[www.kingfisher.com/products](http://www.kingfisher.com/products)**

PL

[www.castorama.pl](http://www.castorama.pl)

**Aby zapoznać się z instrukcją obsługi  
online, odwiedź stronę  
[www.kingfisher.com/products](http://www.kingfisher.com/products)**

RO

[www.bricodepot.ro](http://www.bricodepot.ro)

**Pentru a consulta manualele de  
instrucțiuni online, vizitați  
[www.kingfisher.com/products](http://www.kingfisher.com/products)**

ES

[www.bricodepot.es](http://www.bricodepot.es)

**Para consultar los manuales de  
instrucciones en línea, visite  
[www.kingfisher.com/products](http://www.kingfisher.com/products)**

PT

[www.bricodepot.pt](http://www.bricodepot.pt)

**Para consultar manuais de  
instruções online, visite  
[www.kingfisher.com/products](http://www.kingfisher.com/products)**

TR

**İthalatçı Firma:**

KOÇTAŞ YAPI MARKETLERİ TİC. A.Ş.  
Taşdelen Mah. Sırrı Çelik Bulvarı No: 5  
34788 Taşdelen/Çekmeköy/İSTANBUL  
Tel: +90 216 4300300  
Faks: +90 216 4844313  
[www.koctas.com.tr](http://www.koctas.com.tr)

**Kullanım kılavuzuna internet  
üzerinden ulaşmak için  
[www.kingfisher.com/products](http://www.kingfisher.com/products)  
adresini ziyaret edin**

Yetkili servis istasyonları ve yedek parça  
temini için aşağıda yer alan Koçtaş  
Müşteri Hattı ve Koçtaş Genel Müdürlük  
irtibat bilgilerinden faydalanınız.

**KOÇTAŞ MÜŞTERİ HİZMETLERİ**  
0850 209 50 50