

6. Fehlersuche

Der Empfänger wird nicht aktiviert, wenn die Fernbedienung gedrückt wird:

- Überprüfen Sie die Polarität der Batterie und/oder dass sie nicht leer ist.
- Vergewissern Sie sich, dass der Funkschalter mit dem Empfänger verbunden ist und dass der Empfänger richtig angeschlossen ist.
- Überprüfen Sie den Status des Empfängerspeichers (siehe Handbuch des Empfängers).

Wichtig: Die Reichweite zwischen dem Empfänger und der Fernbedienung beträgt 50 m, sie kann jedoch durch die Dicke der Wände oder eine aktuelle Funkumgebung verringert werden. Zwischen zwei DiO-Empfängern (Modul, Sockel und/oder Glühbirne) ist ein Mindestabstand von 1-2 m erforderlich.

7. Technische Daten

- Protokoll: DiO 1.0
- Frequenz: 433,92 MHz
- Max. übertragene Funkfrequenzleistung: <20 mW
- Betriebstemperatur: -10 bis 35°C
- Übertragungsbereich: 50 m (im freien Feld)
- Lithium-Batterie: CR2032 3V (mitgeliefert)
- Anzahl der Kanäle: 1
- Abmessungen: 86 x 85 x 13 mm

Verwendung in Innenräumen (IP20). Nicht in einer feuchten Umgebung verwenden.

8. Ergänzung Ihrer Anlage

Ergänzen Sie Ihre Installation mit DiO-Lösungen, um Ihre Beleuchtung, Rollläden oder Ihren Garten zu steuern oder mit Videoüberwachung das Geschehen zu Hause im Auge zu behalten.

Einfach, hochwertig, skalierbar und wirtschaftlich... Informieren Sie sich über alle DiO Connected Home Lösungen unter www.chacon.com.

EN. Wireless switch for roller shutter

0. Video tutorial

We have produced a series of video tutorials to make it easier to understand and install our solutions. You can view them on our [Youtube.com/c/dio-connected-home](https://www.youtube.com/c/dio-connected-home) channel, in the Playlists tab. You can also view them through our website www.chacon.com in the Support tab.

1. Install the wireless switch

1.1 Activating the switch

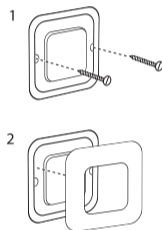
Remove the plate of the switch (see paragraph 2) and remove the tab on the battery.

1.2 Installing the unit

You have two options:

- Use the supplied double-sided adhesives to attach the wireless switch on the wall, making sure the LED on the switch is facing up.

- Use small screws (not included). For this option, remove the wireless switch frame and place the 2 screws into the slot, making sure the LED is at the top of the switch. Then replace the frame.

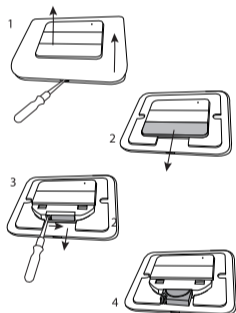


2. Changing the battery

The switch LED will become dim when battery is low.

To change the battery:

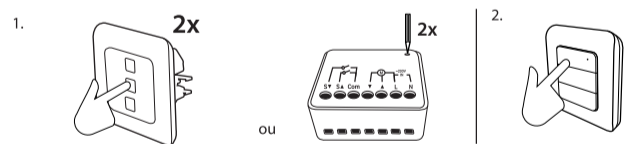
1. Remove the front frame and slide the down button (v) downwards.
2. Using a small flat screwdriver, remove the battery compartment by pressing the small notch inwards while pulling downwards.
3. Replace the old battery with a new CR2032 - 3V type, making sure to place it with the + side facing up.
4. Replace the battery compartment, faceplate and the front frame until you hear a click.



Warning: Risk of explosion if the battery is not replaced correctly. Replace only with the same type or an equivalent type.

This product contains a coin / button cell battery. If the coin / button cell battery is swallowed, it can cause severe internal burns in just 2 hours and can lead to death. Keep new and used batteries away from children. If the battery compartment does not close securely, stop using the product and keep it away from children. If you think batteries might have been swallowed or placed inside any part of the body, seek immediate medical attention.

3. Linking the switch with the receiver



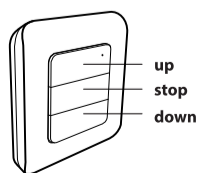
1. Connect the receiver (module, socket, connected switch).
2. Bring the wireless switch close to the DiO or DiO Connect receiver and press the receiver learn button (see receiver manual); the receiver LED flashes.
3. Press the ON button of the switch to link them.
4. The LED on the module/socket flashes twice to confirm the association.

4. Deleting the link between the wireless switch and a DiO receiver

If you want to delete a receiver from the switch:

1. Bring the switch close to the receiver to be deleted and press the receiver learn button (socket, module – see product manual); the receiver LED flashes.
2. Press the "OFF" button on the switch (top of the switch, where the LED is), the LED on the receiver will blink twice to confirm the deletion.

5. Use



Raise your shutter: press the up button (▲) 1x to open the shutter.

Lower your shutter: press the down button (▼) 1x to close your shutter.

Stop movement: press the central button (//) to stop the shutter wherever you want.

Note: if you use the shutter switch with the DiO 1.0 roller shutter module or motor (54854, MVR-40-10RF or MVR-60-10RF/20RF/50RF), you need to press the up or down button a 2nd time to stop the shutter.

DiO 1.0 receivers (lighting module, shutter module, socket, bulb, etc.) can be controlled individually or in conjunction with other receivers (e.g.: a DiO switch closes the shutter linked to a DiO shutter module and at the same time turns on the lamp connected to the lighting module, and the DiO remote control turns the lamp on and off individually).

6. Troubleshooting

The receiver is not activated when the remote control is pressed:

- Check the polarity of the battery and/or that it is not flat.
- Make sure that the wireless switch is linked to the receiver and that the receiver is connected correctly.
- Check the status of the receiver memory (see receiver manual).

Important: The range between the receiver and the remote control is 50 m, but this may be reduced by the thickness of the walls or a currently wireless environment.

A minimum distance of 1-2 m is necessary between two DiO receivers (module, socket and/or bulb).

Do not use in a damp location.

7. Technical specifications

- Protocol: DiO 1.0
- Frequency: 433.92 MHz
- Max transmitted radio frequency power: <20 mW
- Operating temperature: -10 to 35°C
- Transmission range: 50 m (in free field)
- Lithium battery: CR2032 3V (included)
- Number of channels: 1
- Dimensions: 86 x 85 x 13 mm

Indoor use (IP20). Do not use in a damp environment.

8. Supplementing your installation

Supplement your installation with DiO solutions to control your lighting, roller shutters, or garden, or to use video surveillance to keep an eye on what is happening at home.

Easy, high-quality, scalable and economical... Learn about all of the DiO Connected Home solutions at www.chacon.com.



Recyclage
Conformément aux directives européennes DEEE(2002/96/CE) et relative aux accumulateurs (2006/66/CE), tout appareil électrique, électronique ou accumulateur doit être collecté séparément par un système local et spécialisé de collecte des déchets. Ne jetez pas ces produits avec les déchets ordinaires. Consultez la réglementation en vigueur. La marque en forme de poubelle indique que ce produit ne doit pas être jeté avec les ordures ménagères dans aucun des pays de l'UE. Afin de prévenir tout risque sur l'environnement ou la santé humaine lié à la mise au rebut incontrôlée, recyclez le produit de façon responsable afin de promouvoir l'utilisation durable des ressources matérielles. Pour renvoyer votre appareil usagé, utilisez les systèmes de renvoi et collecte ou contactez le revendeur d'origine. Il se chargera du recyclage dans le respect des dispositions réglementaires.



CHACON déclare que l'appareil 54714 est conforme aux exigences et dispositions de la directive RED 2014/53/EU. Le texte complet de la déclaration UE de conformité est disponible à l'adresse internet suivante : www.chacon.com/conformity



Recycling
Overeenkomstig de Europese AEEA-richtlijn (2002/96/EG) en de Europese richtlijn inzake batterijen en accu's (2006/66/EG) moeten alle afgedankte elektrische en elektronische apparaten, batterijen en accu's gescheiden ingezameld worden door een lokale instantie die gespecialiseerd is in het inzamelen van afval. Gooi deze producten niet bij het gewone huishoudafval. Raadpleeg de geldende regelgeving. Het symbool van de doorgekruiste afvalcontainer geeft aan dat het in alle landen van de EU verboden is dit product weg te gooien bij het huishoudafval. Om het milieu en de volksgezondheid niet in gevaar te brengen door ongecontroleerd afval te worden geproduceerd, moet dit product op verantwoorde wijze gerecycled worden om het duurzame gebruik van materialen te bevorderen. Voor het inleveren van uw afgedankte apparaat kunt u een beroep doen op inlever- of inzamelinstanties of kunt u contact opnemen met uw oorspronkelijke verkoper. Deze zal instaan voor de recycling overeenkomstig de reglementaire voorschriften.



CHACON verklaart dat het apparaat 54714 voldoet aan de eisen en bepalingen van de radioapparatuurrichtlijn 2014/53/EU. De volledige tekst van de EU-conformiteitsverklaring is te vinden op het volgende internetadres: www.chacon.com/conformity



Reciclaje
De conformidad con las directivas europeas DEEE (2002/96/CE) y sobre acumuladores (2006/66/CE), los aparatos eléctricos, electrónicos o los acumuladores deberán ser objeto de una recogida selectiva por un sistema local y especializado de eliminación de residuos. No tire estos productos con los residuos domésticos. Consulte la normativa vigente. La marca en forma de contenedor indica que este producto no debe eliminarse con los residuos domésticos en ningún país de la UE. Para evitar riesgos en el medio ambiente o la salud humana relativos a una eliminación incontrolada, recicle el producto de forma responsable para promover el uso sostenible de los recursos materiales. Para devolver el aparato usado, utilice los sistemas de reenvío y recogida o contacte con el distribuidor original. Este se encargará del reciclaje en virtud de las disposiciones reglamentarias.



CHACON declara que el aparato 54714 cumple con los requisitos y las disposiciones de la directiva RED 2014/53/EU. El texto completo de la declaración UE de conformidad está disponible en la siguiente dirección: www.chacon.com/conformity



Reciclagem
Em conformidade com as diretivas europeas DEEE(2002/96/CE) e relativas aos acumuladores (2006/66/CE), qualquer aparelho elétrico, eletrônico ou acumulador deve ser recolhido separadamente por um sistema local e especializado de recolha de resíduos. Não elimine estes produtos com os resíduos comuns. Consulte os regulamentos em vigor. A marca em forma de caixote de lixo indica que este produto não deve ser eliminado com o lixo doméstico nos países da UE. De modo a prevenir qualquer risco ao ambiente ou saúde humana relacionado com a eliminação não controlada, recicle o produto de forma responsável de modo a promover a utilização sustentável dos recursos materiais. Para devolver o aparelho usado, utilize os sistemas de devolução e recolha ou contacte o fornecedor. Ele vai encarregar-se da reciclagem em conformidade com as disposições regulamentares.



A CHACON declara que o aparelho 54714 está em conformidade com as exigências e disposições da diretiva RED 2014/53/EU. O texto completo da declaração de conformidade da UE está disponível no seguinte endereço: www.chacon.com/conformity



Riciclo
Conformemente alle direttive europee RAEE (2002/96/CE) e alla direttiva in materia di accumulatori (2006/66/CE), tutte le apparecchiature elettriche, elettroniche o gli accumulatori devono essere raccolti separatamente da un'impresa locale specializzata nello smaltimento dei rifiuti. Non smaltire questi prodotti con i rifiuti ordinari. Fare riferimento alla regolamentazione in vigore. Il simbolo del contenitore per rifiuti indica che questo prodotto non può essere smaltito con i rifiuti domestici in nessun paese dell'UE. Per evitare rischi per l'ambiente o la salute umana derivanti da uno smaltimento incontrollato, riciclare il prodotto in modo responsabile al fine di promuovere l'uso sostenibile dei materiali. Per restituire i dispositivi usati, utilizzare il sistema di raccolta o contattare il rivenditore originale che si occuperà del riciclo nel rispetto della normativa vigente.



CHACON dichiara che il dispositivo 54714 è conforme ai requisiti e alle disposizioni della direttiva RED 2014/53/EU. Il testo integrale della dichiarazione di conformità UE è disponibile al seguente indirizzo: www.chacon.com/conformity



Wiederverwertung
Gemäß der europäischen WEEE-Richtlinie (2002/96/EG) und der Richtlinie über Akkumulatoren (2006/66/EG) muss jedes elektrische oder elektronische Gerät oder jeder Akkumulator von einem auf die Sammlung solcher Abfälle spezialisierten lokalen System getrennt gesammelt werden. Diese Produkte dürfen nicht mit dem normalen Abfall entsorgt werden. Informieren Sie sich über die geltenden Vorschriften. Das Logo in Form einer Mülltonne weist darauf hin, dass dieses Produkt in keinem EU-Land mit dem Hausmüll entsorgt werden darf. Um eine Gefährdung der Umwelt oder der menschlichen Gesundheit durch unkontrollierte Verschrottung zu vermeiden, recyceln Sie das Produkt auf verantwortungsvolle Weise. Dies fördert den nachhaltigen Umgang mit den materiellen Ressourcen. Um Ihr Algerät zurückzugeben, nutzen Sie die Rückgabe- und Sammelsysteme oder wenden Sie sich an Ihren Händler. Der Händler wird es gemäß den gesetzlichen Bestimmungen recyceln.



CHACON erklärt, dass das Gerät 54714 mit den Anforderungen und Bestimmungen der Richtlinie RED 2014/53/EU übereinstimmt. Der vollständige Text der EU-Konformitätserklärung ist unter folgender Internetadresse verfügbar: www.chacon.com/conformity



Recycling
In accordance with European WEEE directives (2002/96/EC) and directives concerning accumulators (2006/66/EC), any electrical or electronic device or accumulator must be collected separately by a local system specialising in the collection of such waste. Do not dispose of these products with ordinary waste. Check the regulations in force. The logo shaped like a waste bin indicates that this product must not be disposed of with household waste in any EU country. To prevent any risk to the environment or human health due to uncontrolled scrapping, recycle the product in a responsible manner. This will promote the sustainable use of material resources. To return your used device, use the return and collection systems, or contact the original dealer. The dealer will recycle it in accordance with regulatory provisions.



CHACON declares that device 54714 conforms with the requirements and provisions of Directive RED 2014/53/EU. The complete text of the EU declaration of conformity is available at the following Internet address: www.chacon.com/conformity

Support

www.chacon.com/support

V.1.1 240314