

Premium 200



Repair Manual

Nilfisk

Preface



This service manual contains detailed description of the main repair work on the cold high pressure washers **Premium 200**

Repair work requires a suitable working place with the necessary water and power supply.

If operating errors are evident, draw the customers attention to the "Operators Manual".

A fault in the high pressure washer can have several causes as described in the section on troubleshooting.

Refer to the illustrated "Spare Parts Catalogue" during repairs. It shows the assembly position and the sequence in which the individual components should be assembled.

See "Technical Service Bulletin" (TSB) sheets. They include information on technical modifications that have been made after this repair manual was made.

"Technical Service Bulletin" sheets are also valid as a supplement to the spare parts list until publication of a new edition.

"Service Manual" and "Technical Service Bulletin" should be available at the workshop, where the repairs are carried out.

It is not permitted to give them to third parties.

Use original **Nilfisk** spare parts only.

A. Safety instructions	4
------------------------	---

B. Technical data	5
-------------------	---

C. Construction	6 - 7
-----------------	-------

D. Function	8 - 9
-------------	-------

E. Troubleshooting	10
--------------------	----

F. Service / Repair	11 - 25
---------------------	---------

G. Adjustment / Test	26 - 29
----------------------	---------

H. Wiring diagrams	30 - 31
--------------------	---------

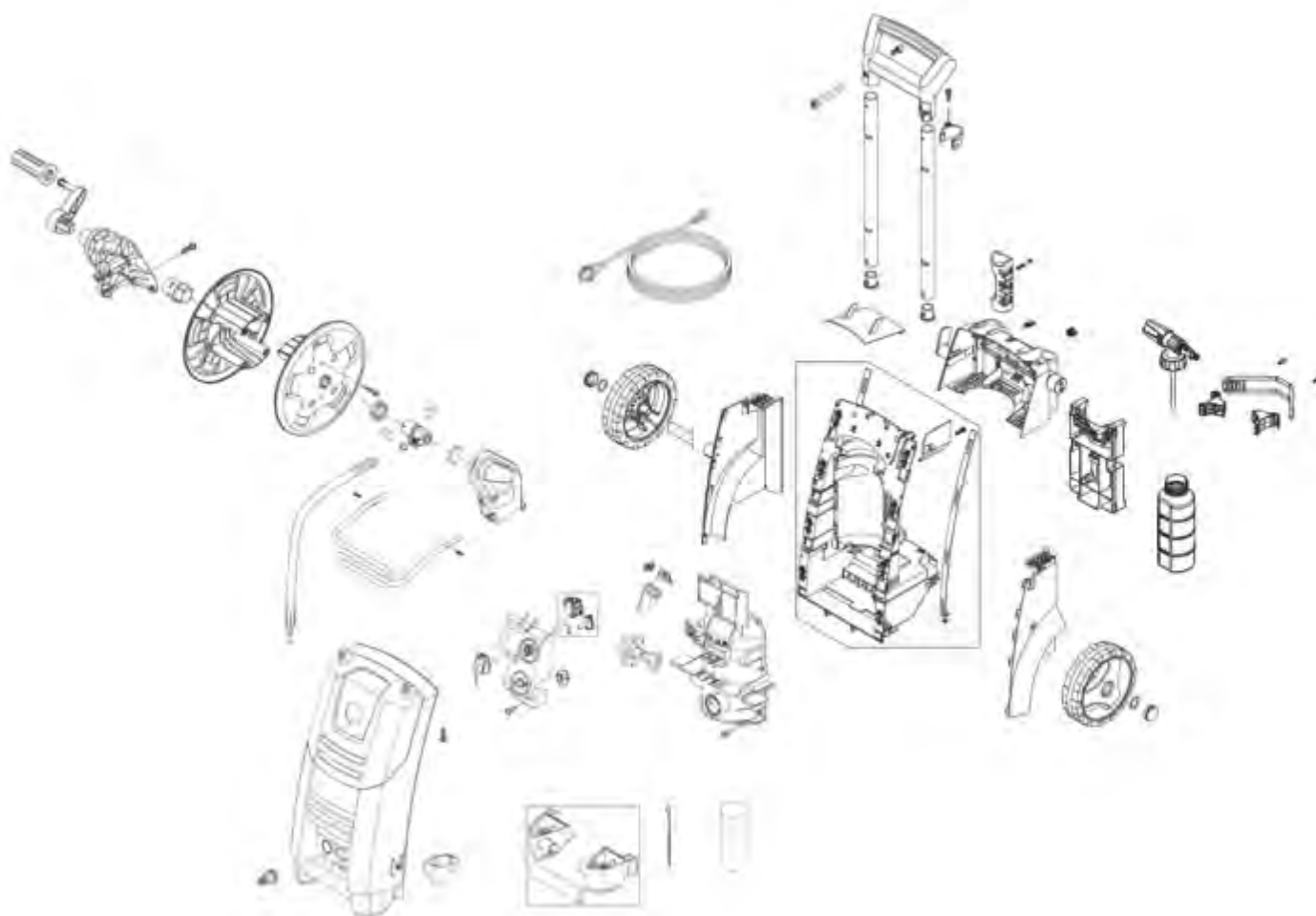
I. Special tools	32
------------------	----

Warning!

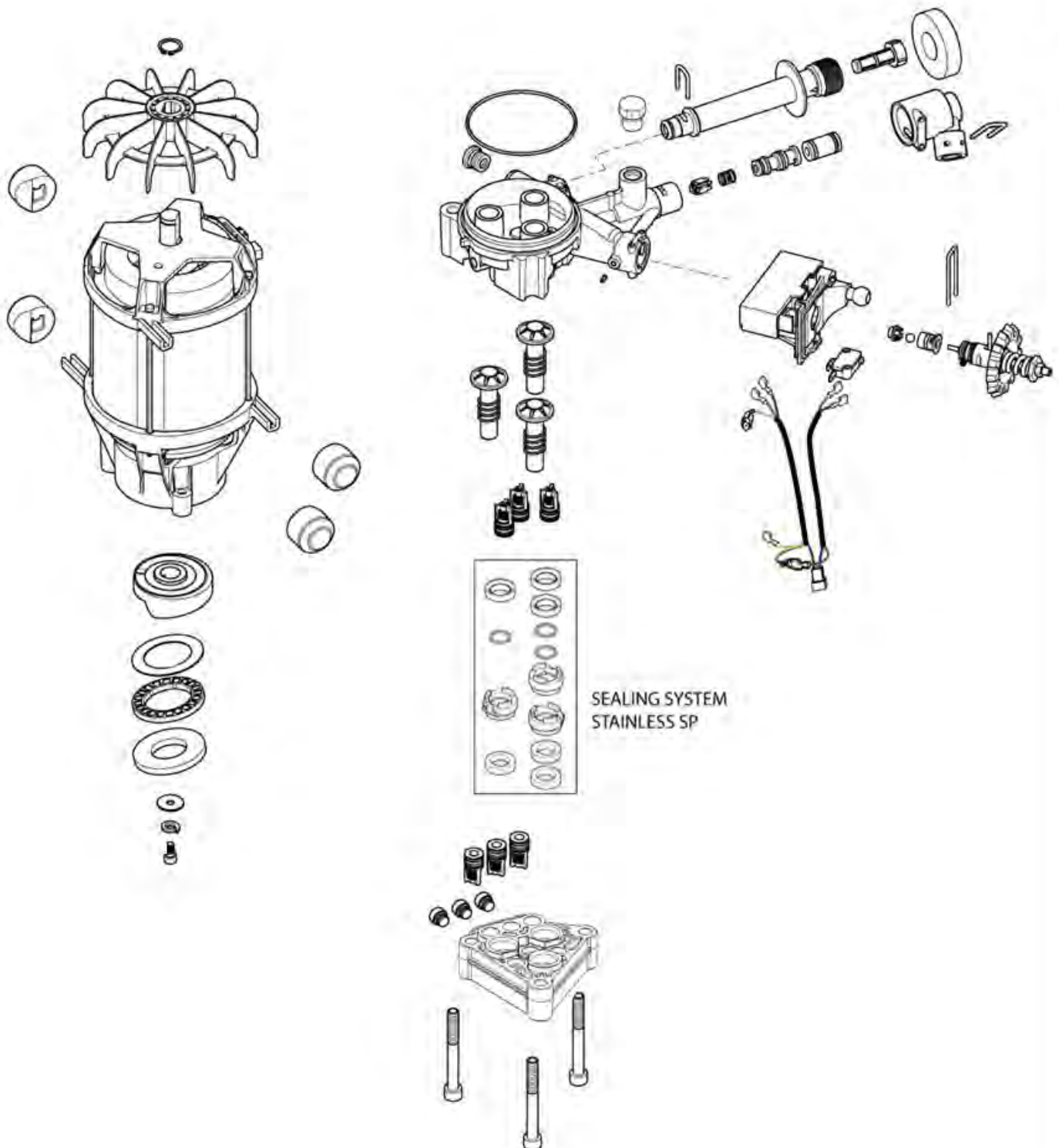
- High pressure jets can be dangerous. Never direct the water jet at persons, animals, live electrical equipment or the machine itself.
- Never try to clean clothes or footwear on yourself or other persons.
- Hold the spray lance firmly with both hands. The spray lance is affected by a thrust of up to 24,1N during operation.
- The operator and anyone in the immediate vicinity of the site of cleaning should take action to protect themselves from being struck by debris dislodged during operation. Wear goggles during operation.
- This appliance has been designed for use with cleaning agents supplied or recommended by the manufacturer. The use of other cleaning agents or chemicals may adversely affect the safety of the appliance.
- Disconnect from electrical power supply before carrying out user maintenance.
- To ensure the appliance safety only use original spare parts from the manufacturer or approved by the manufacturer.
- High pressure hoses, fittings and couplings are important for the safety of the appliance. Only use hoses, fittings and couplings recommended by the manufacturer.
- Do not use the appliance if a supply cord or important parts of appliance are damaged, e.g. safety device, high pressure hose and trigger gun.
- The appliance is only intended for cleaning outdoors.
- Appropriate ear protection must be used.
- Never use the machine in an environment where there could be a danger of explosion. If any doubt arises, please contact the local authorities.
- It is not allowed to clean asbestos containing surfaces with high pressure.
- This high pressure washer must not be used at temperatures below 0°C.
- Never let any persons stay under the product when stored on the wall.

Product segment: Consumer		Premium 200-EU	Premium 200-UK
Specification	bar	Max 190	Max 180
Voltage	V	230	230
Frequency	Hz	50	50
Current	A	14.3	12.6
Power consumption	kW	3.3	2.9
Water volume, HP	l / min.	9.5	9
Pump pressure	bar	150	140
Nozzle pressure	bar	116 ±9	107 ±9
Retaining time	min.	5	5
Oil contents	ml	70	70
Oil type		HV68	HV68
Max water inlet temperature	°C	60	60
Max water inlet pressure	bar	10	10
High pressure hose length	m	15	15
Suction height	m	0,5	0,5
Electric cable	m	5m	5m
Insulation class		F	F
Tightness		IPX5	IPX5

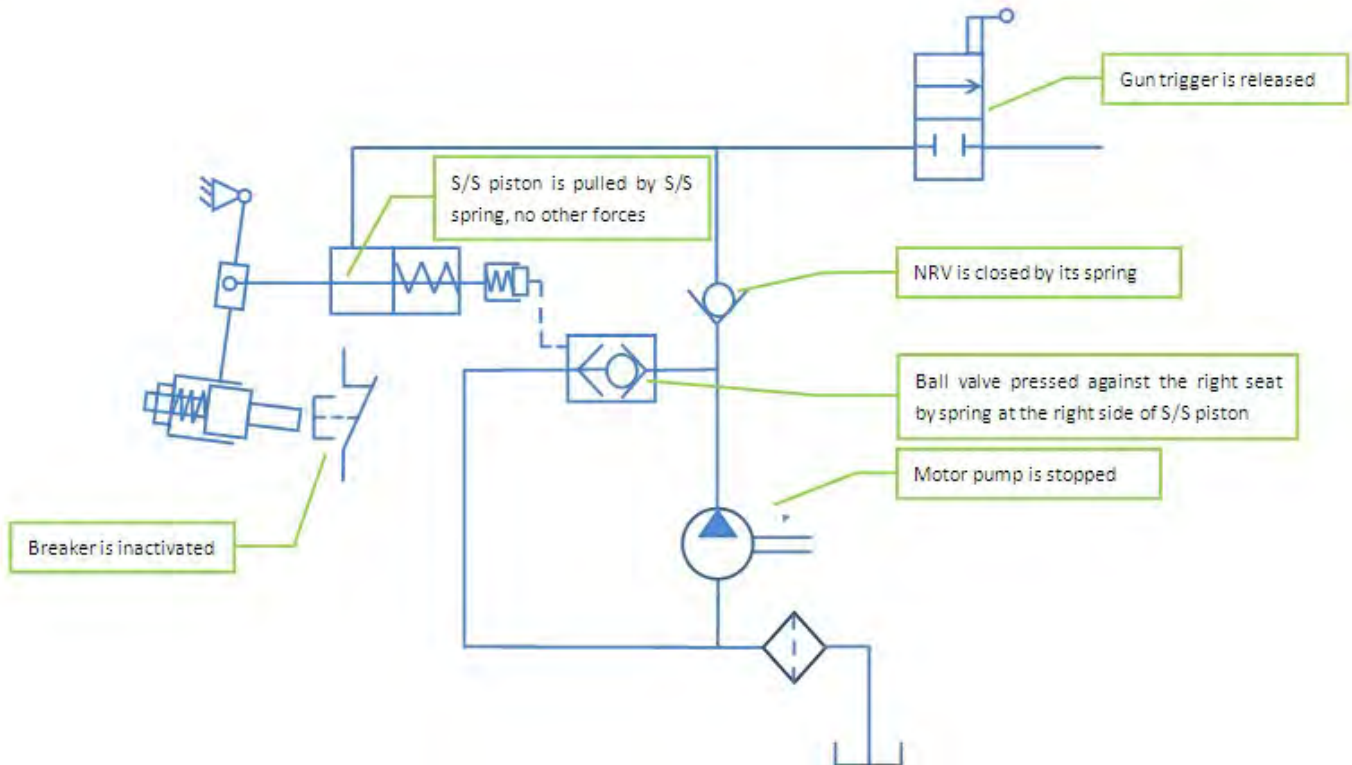
Premium 200, CABINET PARTS OVERVIEW



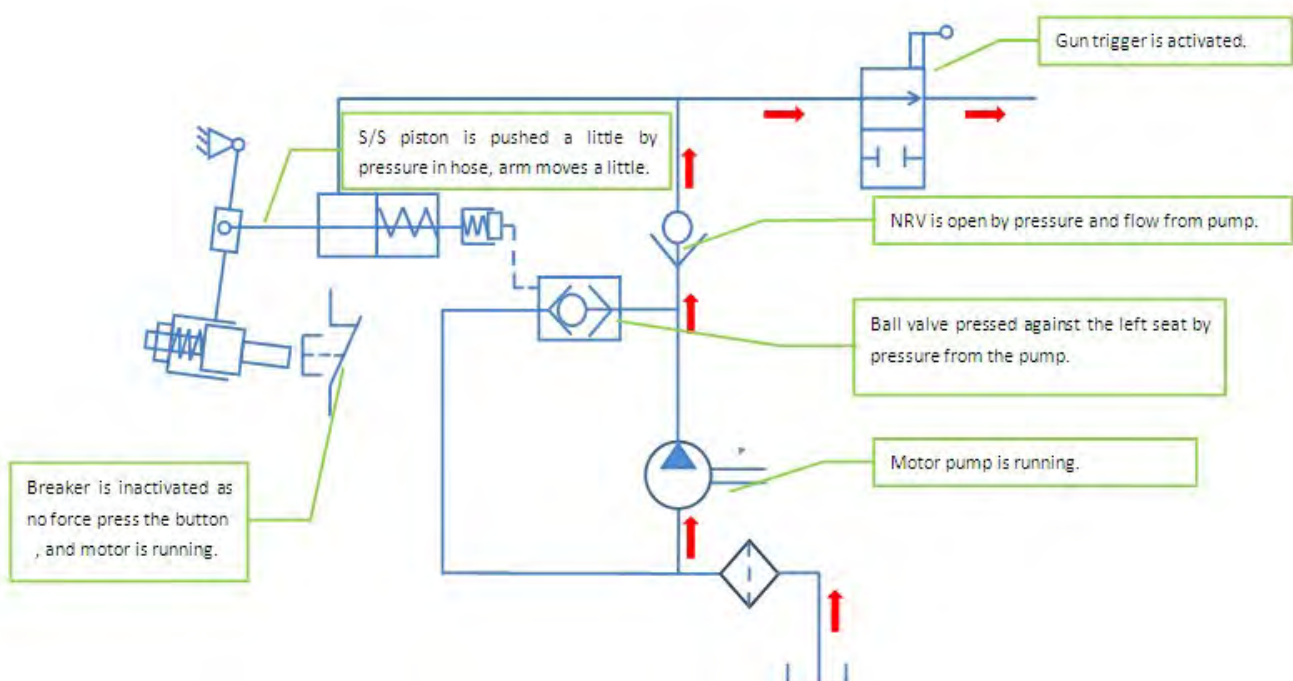
Motor / pump unit overview



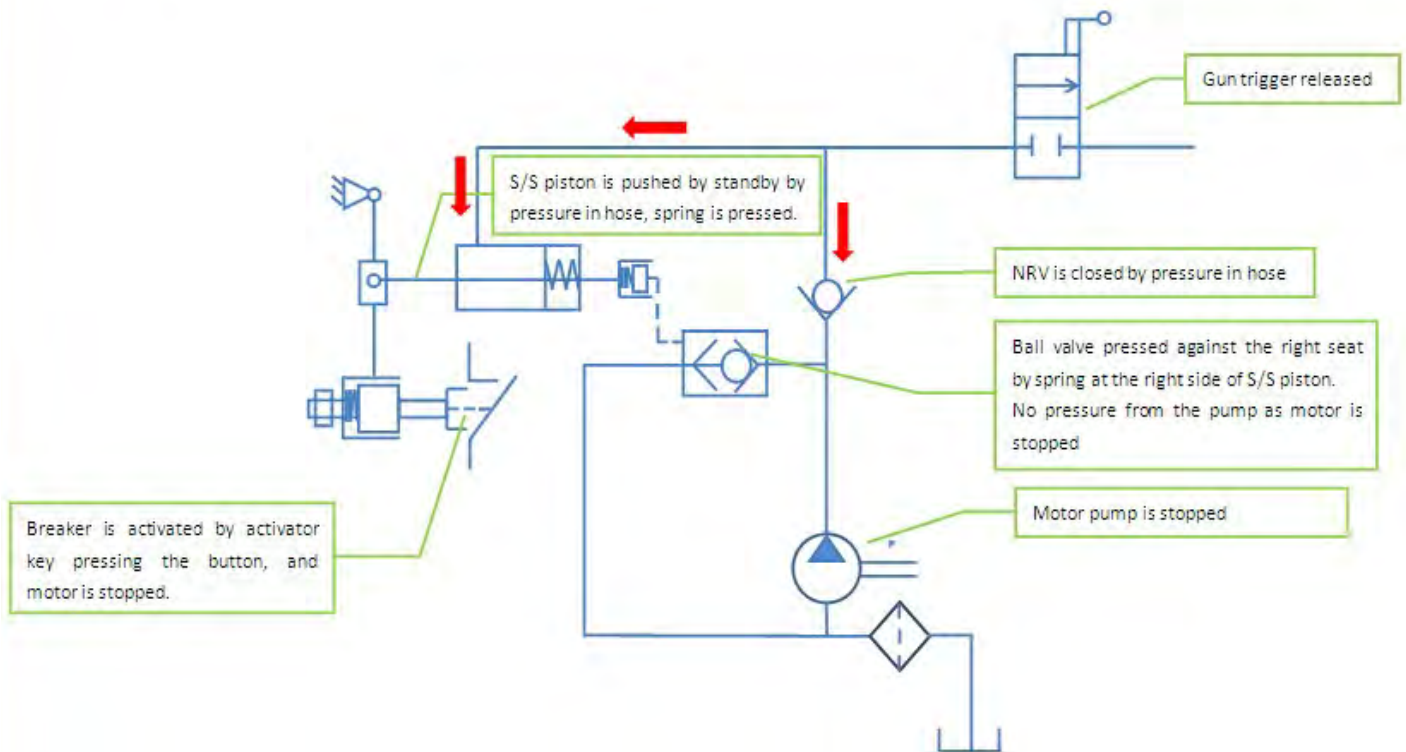
Machine stopped and outlet hose emp-



Machine operation



Machine standby



Symptom	Cause	Recommended action
Machine refuses to start	Machine not plugged in Defective socket Fuse has blown Defective extension cable	Plug in machine. Try another socket. Replace fuse. Switch off other machines. Try without the extension cable.
Fluctuating pressure	Pump sucking air Valves dirty, worn out or stuck Pump seals worn out	Check that hoses and connections are air-tight. Clean and replace or refer to local Nilfisk-distributor Clean and replace or refer to local Nilfisk-distributor.
Motor busses	Low voltage or low temperature	Activate the trigger of the spray handle.
Machine stops	Fuse has blown Incorrect mains voltage Thermal sensor activated Nozzle partially blocked	Replace fuse. Switch off other machines. Check that the mains voltage corresponds to specification on the model tag. Leave the washer for 5 minutes to cool down. Clean the nozzle
Fuse blows	Fuse too small	Change to an installation higher than the amp. consumption of the machine. You may try without the extension cable.
Machine pulsating	Air in inlet hose/pump Inadequate supply of mains water Nozzle partially blocked Water filter blocked Hose kinked	Allow machine to run with open trigger until regular working pressure resumes. Check that the water supply corresponds to specifications required (see model tag) NB! Avoid using long, thin hoses (min. 1/2") Clean the nozzle Clean the filter Straighten out hose.
Machine often starts and stops by itself	 Spray handle is leaking	Contact your nearest Nilfisk Service Centre. Replace seat/ball/O-ring in the valve of the spray handle.
Machine starts, but no water comes out	Pump/hoses or accessory frozen No water supply Water filter blocked Nozzle blocked	Wait for pump/hoses or accessory to thaw. Connect inlet water. Clean the filter Clean the nozzle
Pump pressure drops	Button for regulation of pressure / water volume not correctly adjusted	Adjust the button to correct working pressure.

Dismounting / mounting of front cabinet.

1. Remove the 2 torx 20 screws from the hose reel (Fig 1)
2. Loosen the 2 torx 20 screws from the bottom of the machine and push them completely in. (Fig 2)

NOTE: No electrical tool allowed to loosen the 2 screws from the bottom, as the thread / slider can be damaged if too high torque is used.

The front cabinet can now be removed.

Note: press cabinet before tightening screw!

Fig. 1

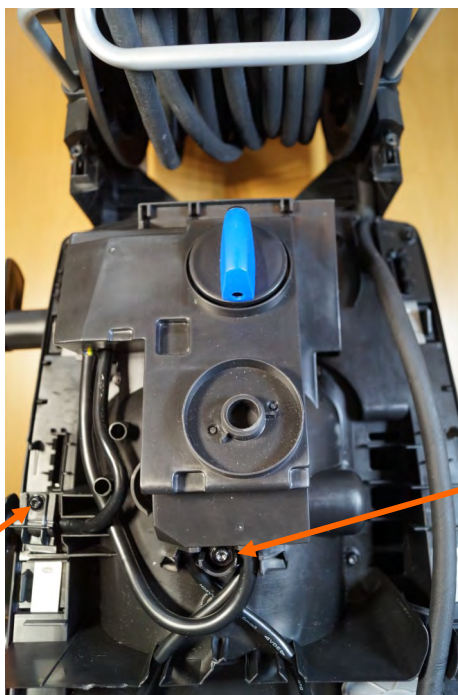
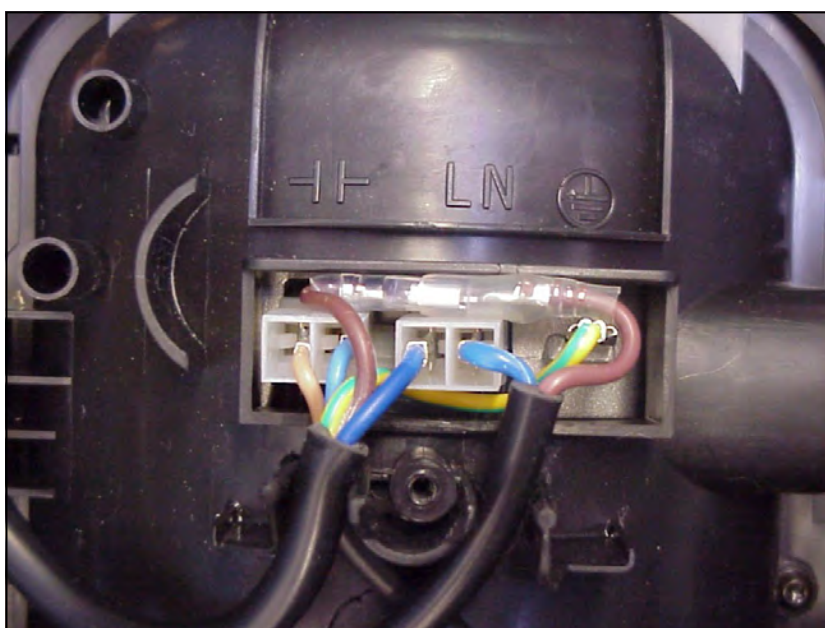


Fig. 2



Disassembly / assembly of switchbox and motor cover.

1. Remove the torx 20 screw from the cable relief and the torx 20 screw from the electrical box (Fig 1)
2. Remove the motor plug, capacitor plug and earth wire. (Fig 2)

Fig. 1**Fig. 2**

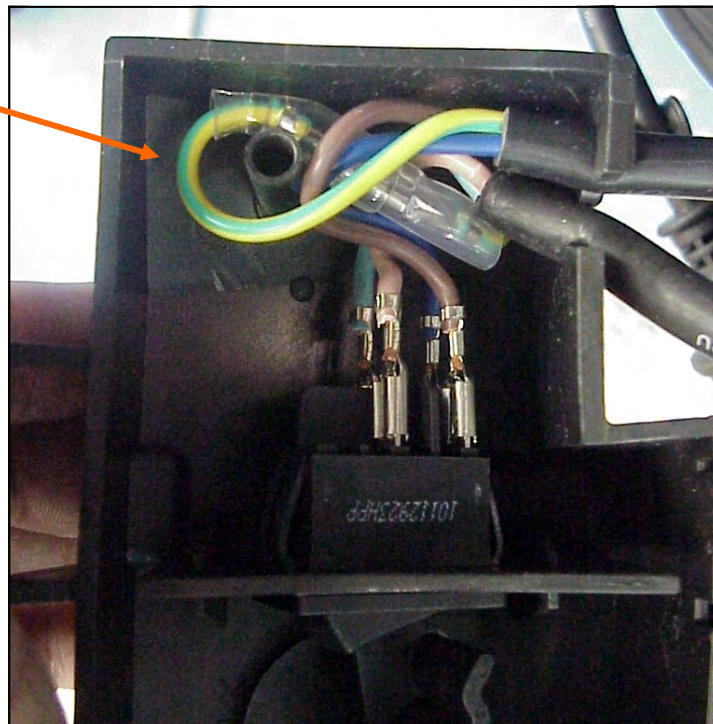
Disassembly / assembly of switchbox and motor cover.

1. The capacitor is fixed with cable tie. Marking has to be visible. The cable tie has to be placed as indicated by the arrow (Fig. 1)
2. Cables and wires are mounted as shown (Fig. 2). The earth wire has to be attached as shown and placed around the tube (Fig. 2)

Fig. 1

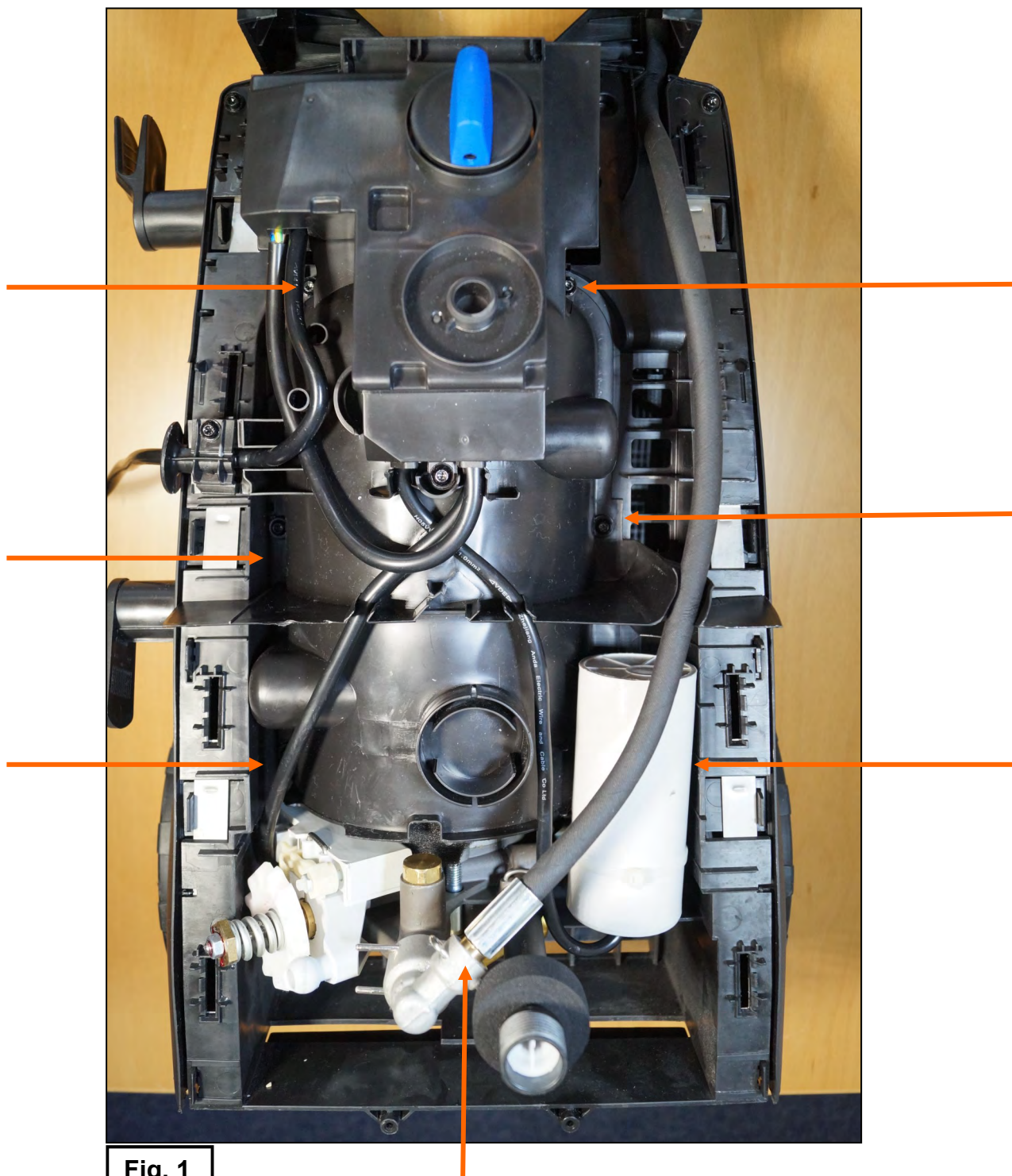


Fig. 2



Disassembly / assembly of switchbox and motor cover.

1. Remove the capacitor for access to motor cover screw.
2. Remove the internal high pressure hose and the 6 torx screws (Fig 1)
3. The motor cover can now be removed and the motor / pump unit can be lifted out of the cabinet.

**Fig. 1**

Disassembly / assembly of the pump.

1. Remove the 3 pieces 6mm hex screws (Fig 1)
2. The pump can now be removed.
3. Oil level as shown (70ml—Fig 2)
4. Bearing and bearing disk can be mounted both sides up. (Fig 3)
5. Thin disk directly on wobble disk, the bearing disk and on top the thick disk.

Fig. 1



Fig. 2



Fig. 3

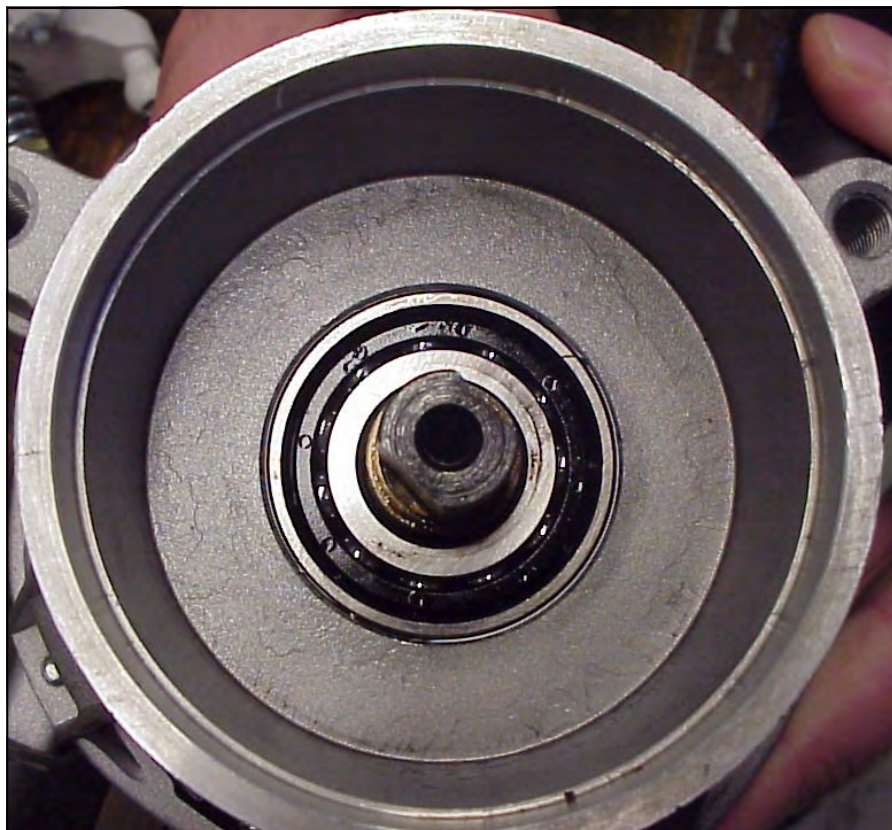


Disassembly / assembly of the pump.

When a failure on bearing parts is observed, it is important that all bad parts and debris from the parts must be removed:

1. Dismount the wobble disc by loosening the screw. (Fig 1)
2. Examine all parts including D-bearing for damages, damaged parts must be replaced.
3. It is very important that the oil must be changed.
4. It is very important that the D-bearing in the motor must be cleaned with compressed air or petrol to clean out parts/dust from the damaged parts, that can have been moved in to the D-bearing.
5. When the D-bearing is cleaned it must be easy to rotate smoothly, without any peek-friction when rotating slowly.
6. All parts must be clean when assembling, applies to both new and reused parts.

Fig. 1



Disassembly / assembly of the pump.

The pump head can be removed from the cylinder block with a screw driver.

1. For the 3 valves in the cylinder head, orientation as shown on Fig. 1 must be made during the mounting process
2. For the 3 valves in the cylinder block the ribs on the valve body must be oriented as indicated on Fig. 2.

Fig. 1

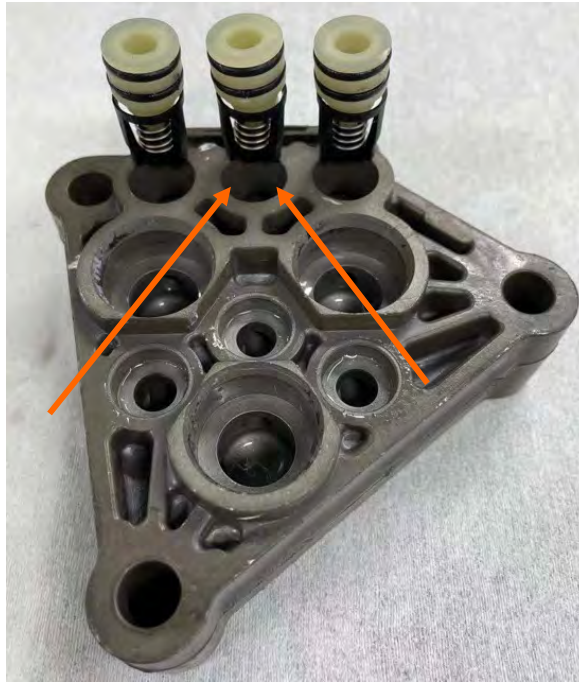
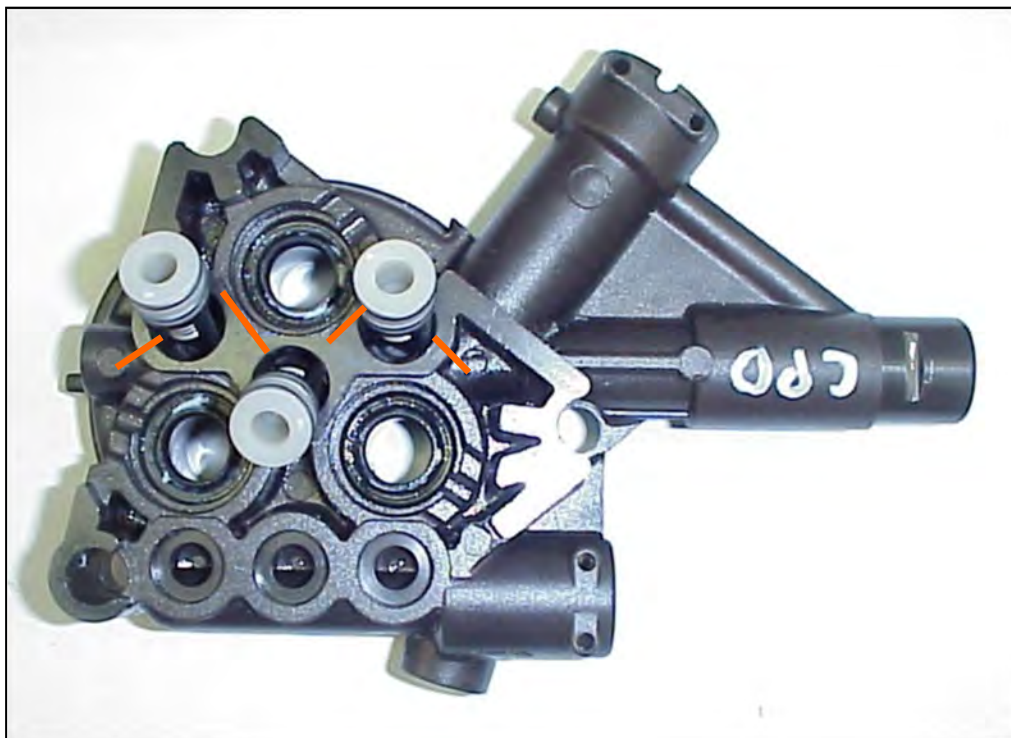


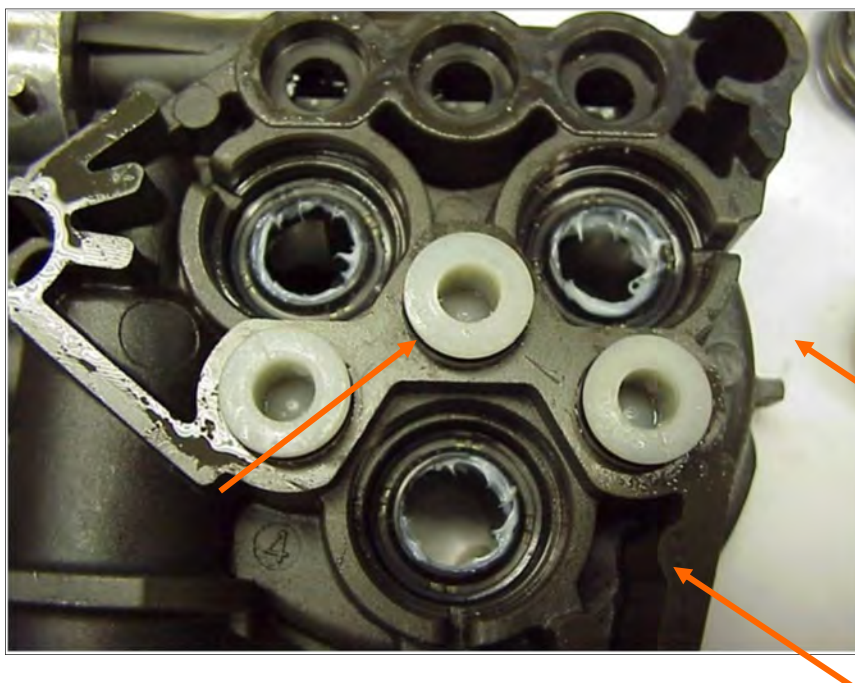
Fig. 2



Disassembly / assembly of the pump.

1. After mounting, the oil-seal must be greased, with Silicone grease (Unisilkon) inside Ø14 hole. (Fig. 1)
2. After the U-sleeve is mounted correctly inside the cylinder head the U-sleeve must be greased with Silicone grease (Unisilkon) inside Ø14 hole where the piston is moving and on the on plane surface of the U-sleeve (Fig. 2)

Note: Additional disk to be placed on top of water sealing if ceramic pistons are used.

Fig. 1**Fig. 2**

Disassembly / assembly of the pump.

1. Mount the pistons
2. Gently place the o-ring around the pistons (Fig. 1)
3. Position the o-ring directly on top of the oil seal with a flat tool with no sharp edges (Fig. 2).

Fig. 1

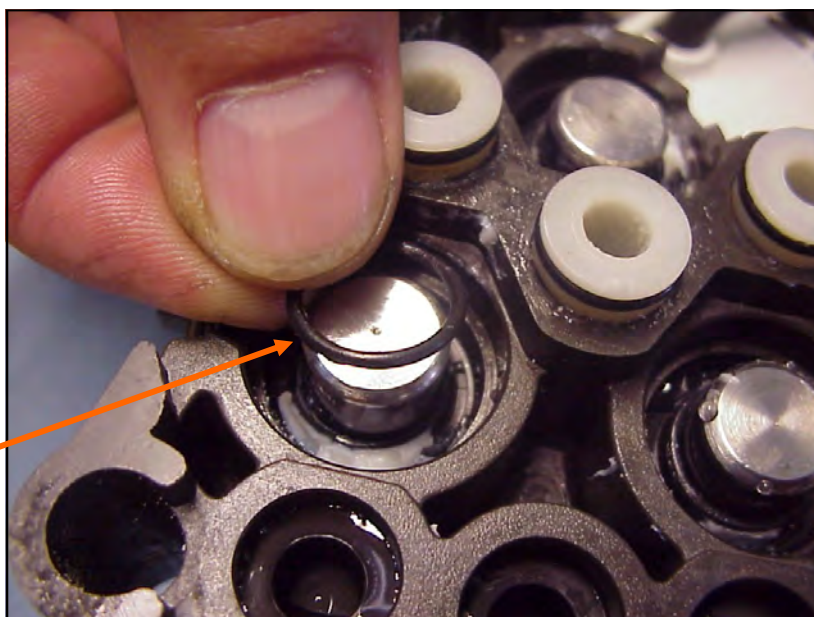
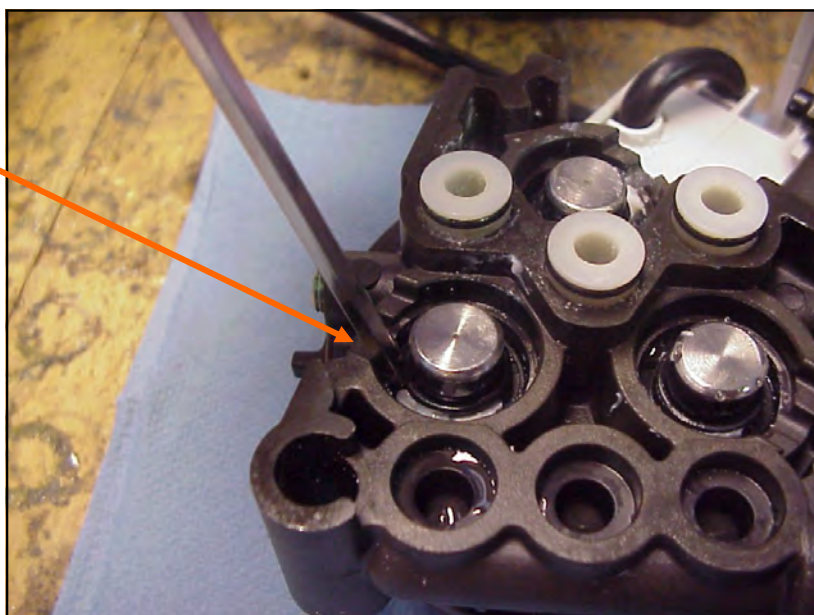


Fig. 2



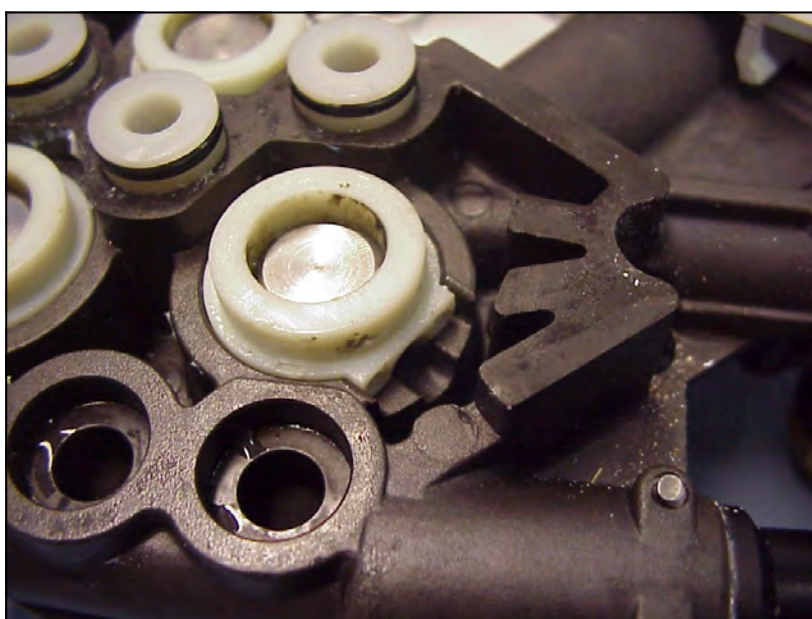
Disassembly / assembly of the pump.

1. Check that the o-ring is correctly placed around the piston.
 2. Mount the thrust collar in the groove as shown in fig. 2.
- Note: Remember to mount the o-ring around the piston before to mount the thrust collar.

Fig. 1



Fig. 2



Disassembly of the brass connector (inside the outlet).

1. Use M8 puller 1220103 to dismount the brass connector (Fig 1)

Fig. 1



Disassembly / assembly of start / stop valve.

1. Dismount the U-pin (Fig 1)
 2. The start / stop valve can now be removed
 3. Use the M8 puller, 1220103 to dismount the ball seat (Fig 2)
- Note: This operation can be done without removing the motor / pump unit from the cabinet.

Fig. 1

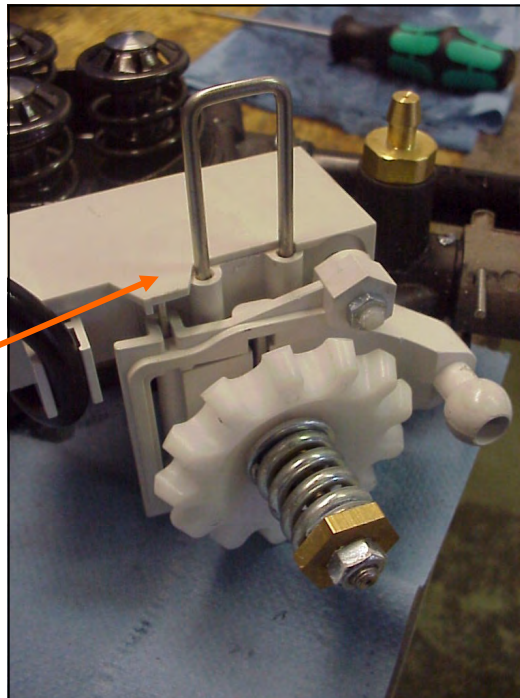
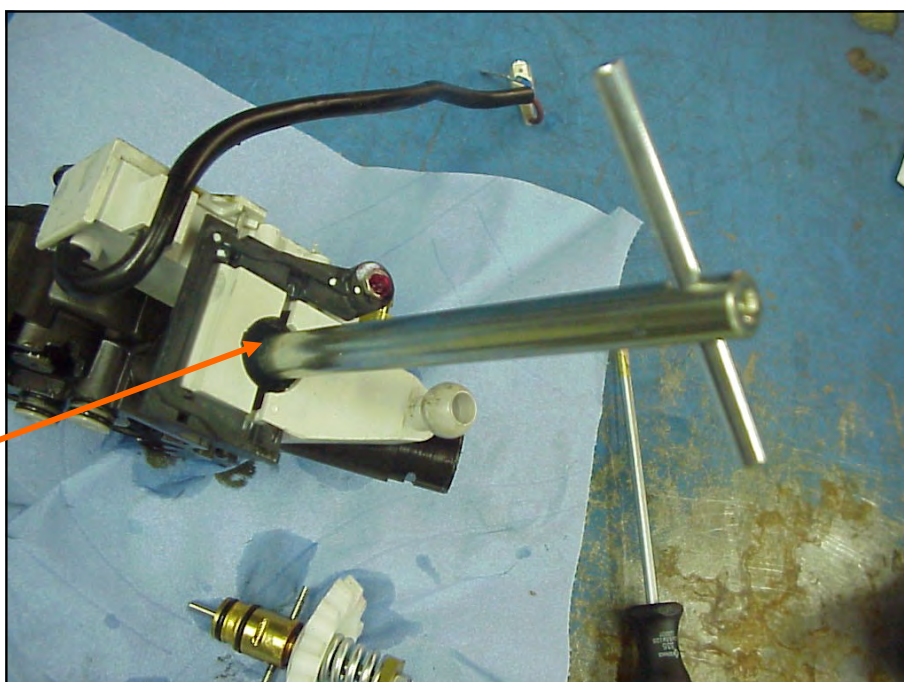


Fig. 2



Change of hose (Hose reel version)

1. The entire nipple item. has to be greased (Fig.1)
2. Placement of the pin (Fig.2)

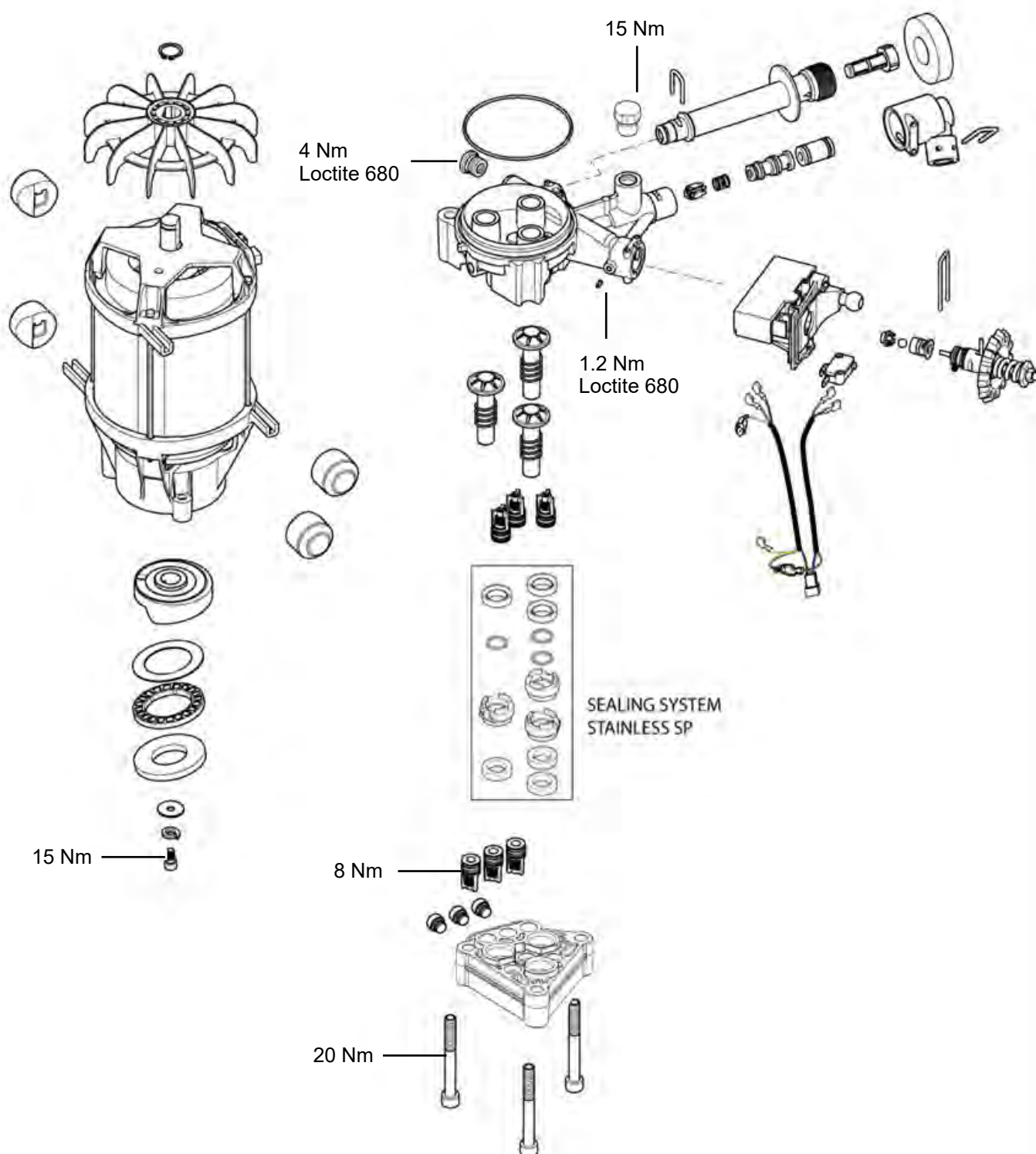
Fig. 1



Fig. 2



Torque



Recommended oil types:

The wobble disk housing is filled with 70 ml HV68 from the production.

Alternative oil types that are allowed:

Shell, Tellus T 68

Exxon, Statoil Univas N 68

Recommended lubrication:

White grease for o-rings, sealing etc.:

Silicone grease (Unisilikon)

DOW CORNING(R) 55 O-RING LUBRICANT

Recommended glue:

Loctite 680, alternatively Loctite 270 or 271 (see page 5)

Loctite 243, alternatively Loctite 245 (to lock the adjustment bolt at the start / stop system)

Loctite 454 on the key end to lock the M5 nut at the micro switch activator arm.

Tools:

Straight (flat) screwdriver (For lock clamps)

Torx 20

6mm hex wrench

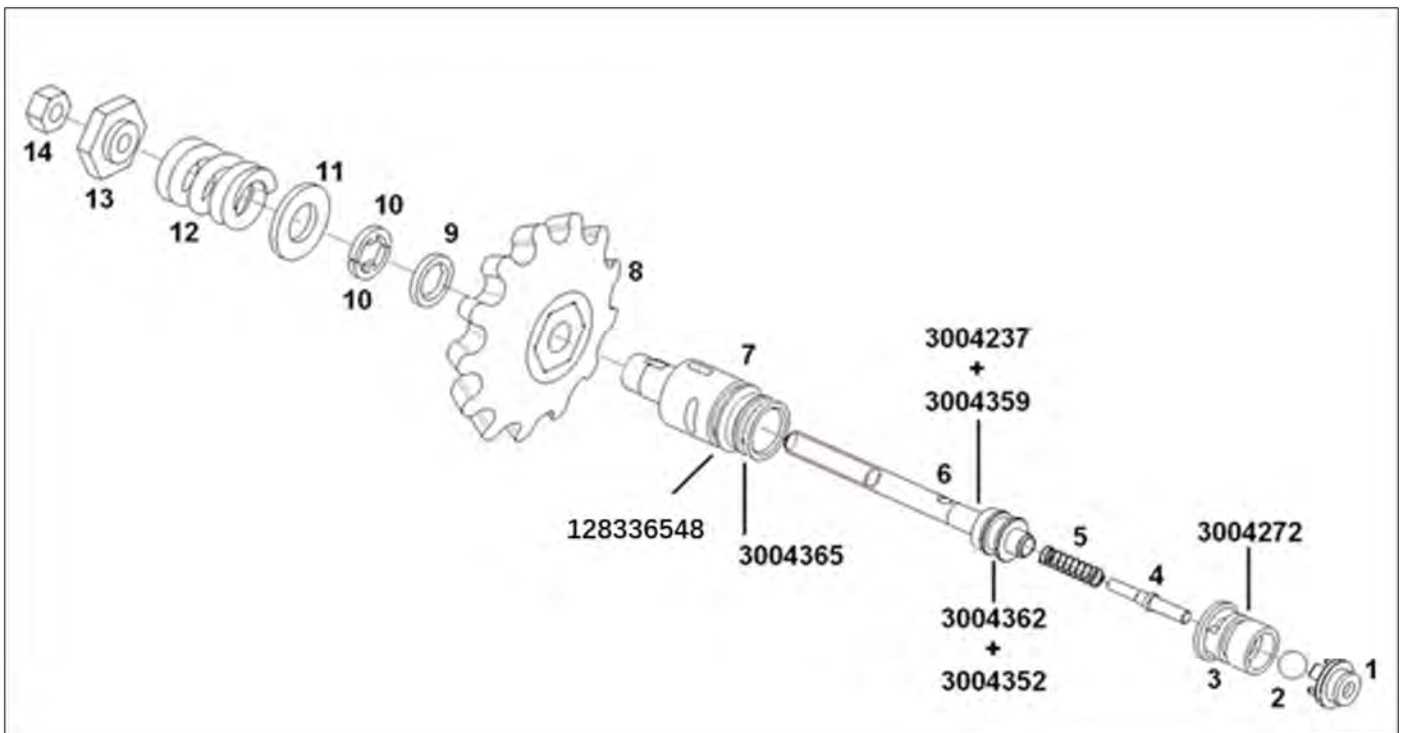
M6 Puller (31000190)

M8 Puller (1220103)



Valve adjusting

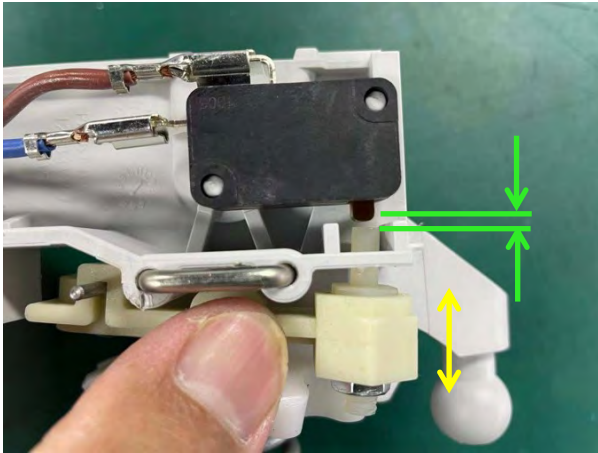
1. Turn the flow regulation to maximum flow
2. Adjust the spring guide (13) by the following procedure until the test manometer shows a standby pressure according to "Technical data" page 5.
 - A. Adjustment of the standby pressure:
 1. Let the machine be operating at the specified working pressure and flow according to the "Technical data" page 5.
 2. Stop the machine by releasing the trigger and read the standby pressure.
 3. Start the machine again by activating the trigger.
 4. Then adjust the spring guide (13) until the standby pressure is around the nominal value according to the "Technical data" page 5.
 5. Repeat "1" to "4" Until the standby pressure is approximately the nominal value according to the "Technical data" page 5.
 6. Lock the adjustment with the counter nut (14).
3. Activate the trigger for 15 s, and let the machine operate according to data in the "Technical data" page 5.
4. Release the trigger, wait 5 s and read the standby pressure at the test manometer.
5. If necessary, repeat point A (1-6) in order to achieve the specified standby pressure.
6. Repeat the opening pressure test method until the opening pressure is according to "Technical data" page 5.
7. When the adjustment is correct, lock with lock lack 9100542.



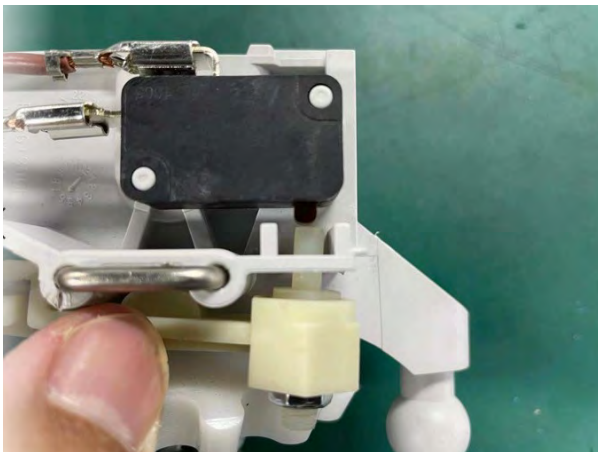
Micro switch adjustment

The micro switch system must be adjusted at working pressure according to the “Technical data” Page 4 according to the below procedure to ensure full functionality and lifetime.

1. Turn the flow regulation to maximum flow.
2. The machine must be running high pressure, and flow, according to the specification in the “Technical data” Page 4.
3. Screw the M5 nut on the adjustable key until there is a clearance between key and micro switch (green), which can be felt by moving the arm backwards and forwards, with a light touch from a finger (yellow arrow)



4. Unscrew the M5 nut (counter-clockwise) carefully, until the key just touches micro switch, the clearance must **only just** disappears = “0 preload and 0 clearance”.
5. Carefully turn the M5 nut $90^\circ \pm 30^\circ$ clockwise. This will move the key approximately 0.2mm, away from the micro switch.
6. Check that there is a clearance between the key and the micro switch.
7. Apply Loctite 454 on the key end to lock the M5 nut. Then the key adjustment is finished.
8. Check as last point that there still is clearance between the key and micro switch.



Micro switch adjustment (Continued)

Check of data according to "Technical data" Page 4.

After the adjustment the data in the "Technical data" Page 4 must be verified by letting the machine run high pressure for two minutes according to "Technical data" Page 4

Control method of clearance after adjustment:

Check the clearance with your finger:

Check the clearance between key and micro switch (green), which can be felt by moving the arm backwards and forwards, by a light touch guiding movement from your finger (yellow arrow), (When doing this check, the lid will normally be on the micro switch box.)

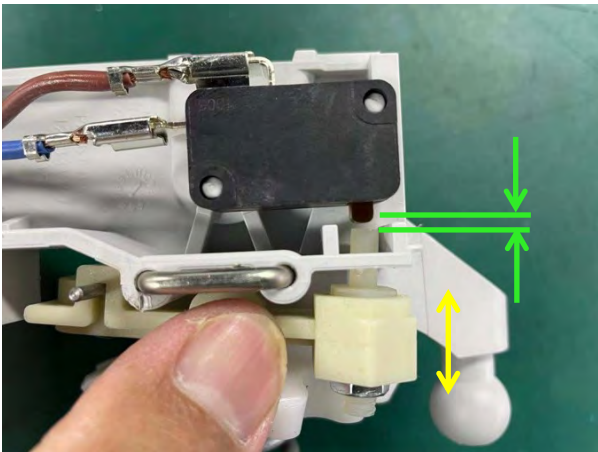


Fig. 1

Fig. 1: To visualize the function inside the micro switch box.



Fig. 2

Fig 2: Check the clearance with your finger.

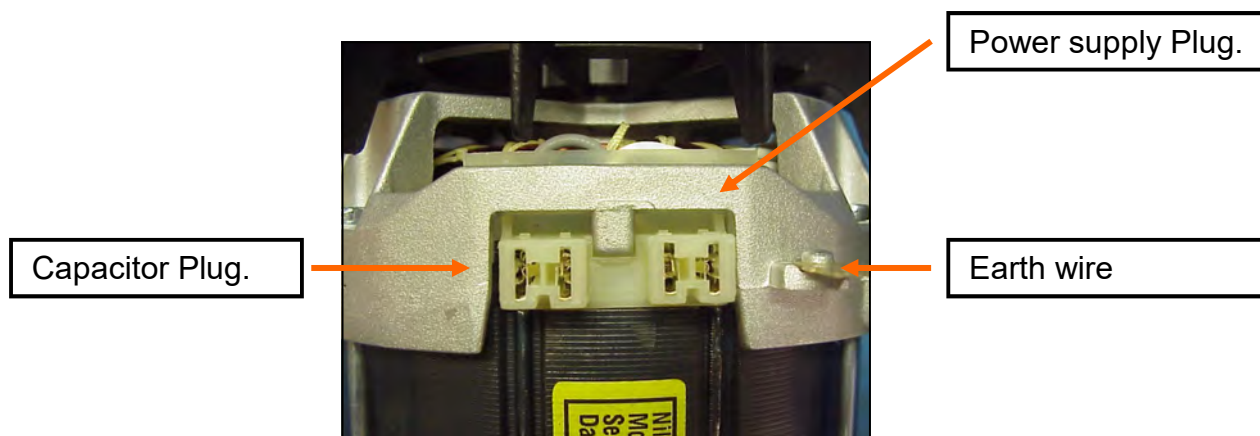
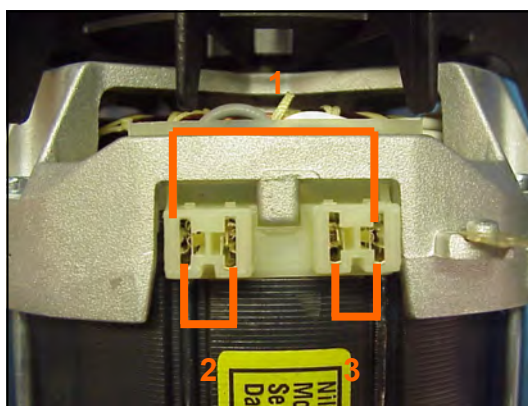
**Guidance of measuring the resistance of electrical motor.
Measuring of motor**

3,3 KW Motor

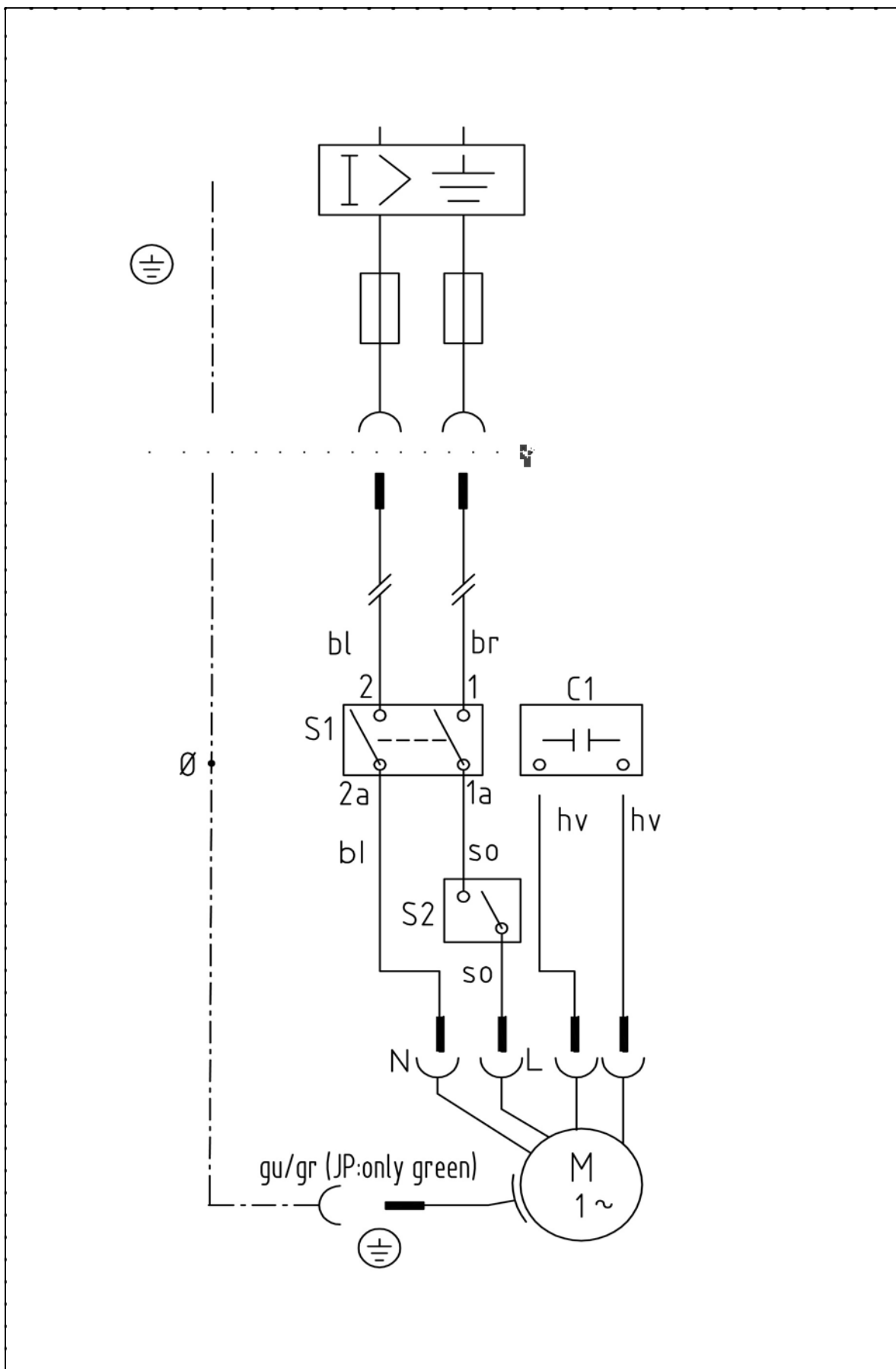
1. 2,8 ohm \pm 10 %
2. 4,0 ohm \pm 10 %
3. 1,2 ohm \pm 10 %

2,9 KW Motor

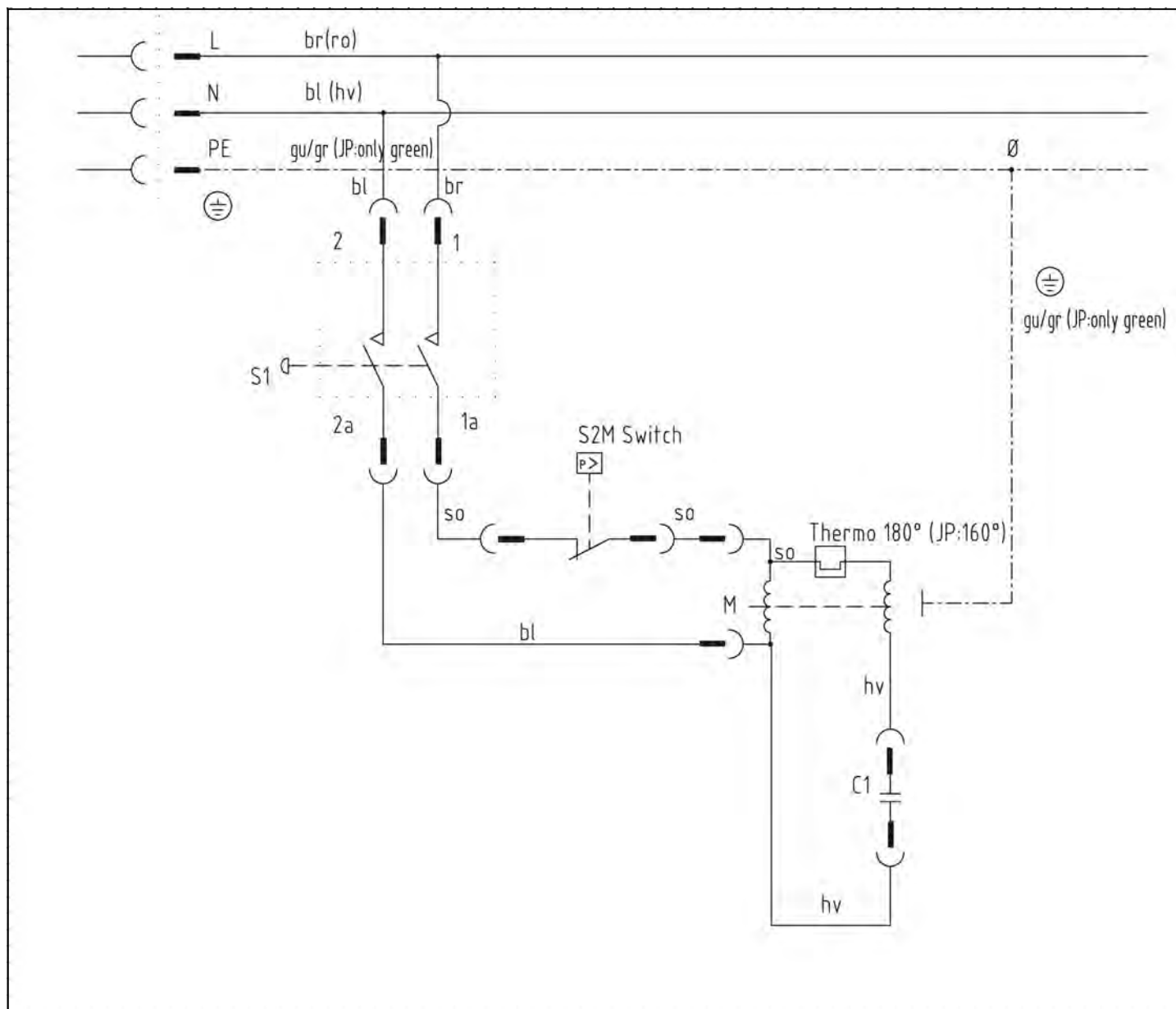
1. 3,5 ohm \pm 10 %
2. 5,5 ohm \pm 10 %
3. 2,0 ohm \pm 10 %



Wiring Diagram



Curcuit Diagram



MC 2C SERVICE MANUAL_ver.1 2021 32

[illegible]