

**PHILIPS**

hue personal  
wireless  
lighting

wall switch module



User manual  
Benutzerhandbuch  
Notice d'emploi  
Manual de usuario  
Manual do usuário  
Manuale d'uso

Incl.



Excl.

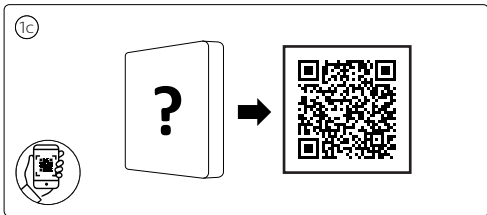
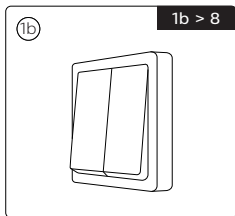
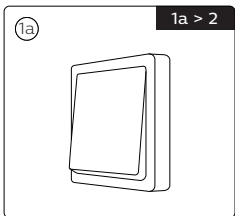
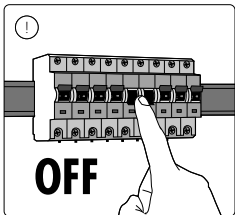


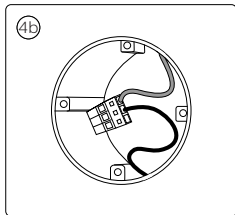
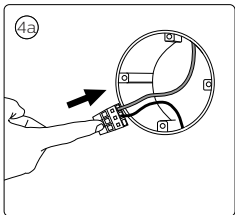
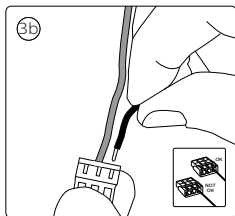
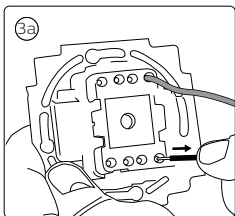
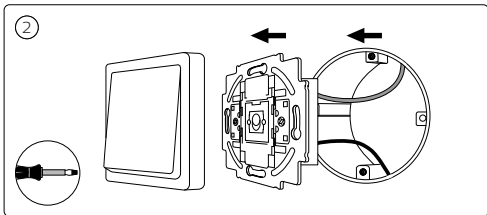


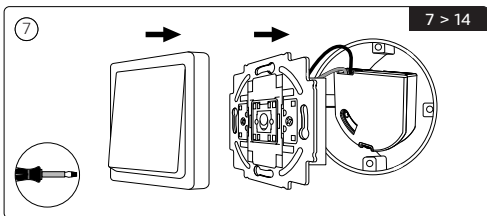
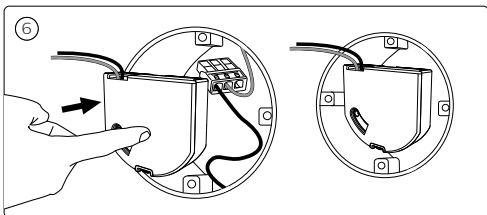
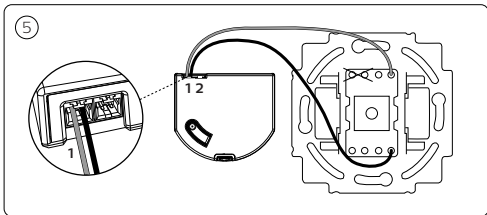
- EN** Work on Electrical installations is in some countries only allowed by a qualified electrician. For support contact a local electrician or authority.
- DE** Die Arbeit an Elektroinstallationen ist in einigen Ländern nur qualifizierten Elektrikern gestattet. Wenden Sie sich zur Unterstützung an einen Elektriker oder eine Behörde vor Ort.
- FR** Dans certains pays, les travaux sur les installations électriques ne peuvent être effectués que par des électriciens qualifiés. Pour toute demande d'assistance, veuillez contacter un électricien ou votre autorité locale.
- ES** En algunos países, únicamente los electricistas cualificados pueden trabajar en instalaciones eléctricas. Si necesitas asistencia, ponte en contacto con la autoridad o con un electricista local.
- IT** In alcuni paesi, solo gli elettricisti qualificati possono svolgere lavori relativi alle installazioni elettriche. Per informazioni, contatta il tuo elettricista di fiducia oppure l'autorità preposta.
- PT** Em alguns países, apenas os electricistas qualificados podem realizar trabalho em instalações elétricas. Para obter assistência, contacte um electricista ou uma autoridade local.

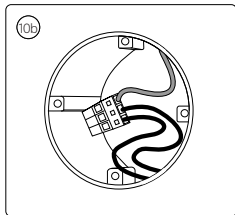
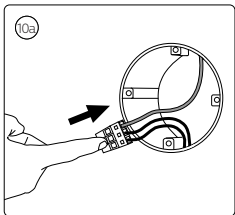
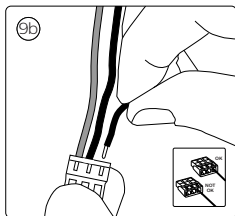
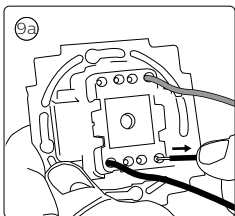
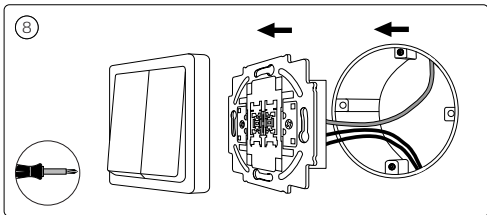


- EN** The electrical circuit and attached light source will always be powered after installation, turn off the circuit when replacing a light fixture / battery.
- DE** Der Stromkreis und die angeschlossene Lichtquelle werden nach der Installation immer mit Strom versorgt. Schalten Sie daher den Stromkreis aus, wenn Sie eine Leuchte / Batterie austauschen.
- FR** Le circuit électrique et la source lumineuse raccordée seront toujours alimentés après l'installation. Par conséquent, mettez le circuit hors tension lors du remplacement d'un luminaire / pile.
- ES** Tras la instalación, el circuito eléctrico y la fuente de luz conectada siempre tendrán alimentación eléctrica. Apaga el circuito cuando cambies una luminaria / batería.
- IT** Dopo l'installazione, il circuito elettrico e la sorgente luminosa collegata rimangono sempre alimentati. Spegni il circuito per sostituire l'apparecchio per illuminazione / batteria.
- PT** O circuito elétrico e a fonte de luz associada estarão sempre ligados à alimentação após a instalação. Quando substituir um equipamento de luz / pilha, desligue o circuito.

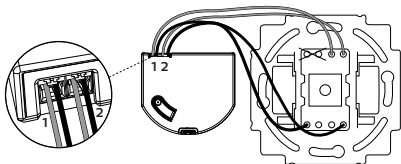




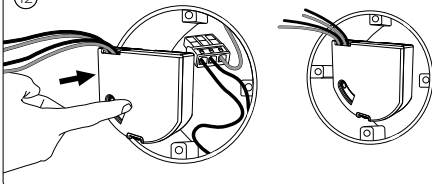




11

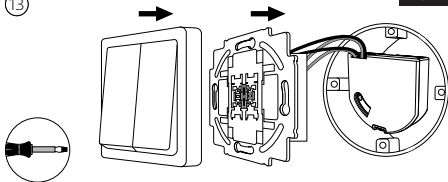


12

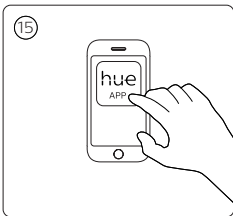
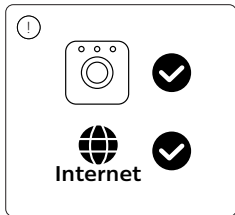
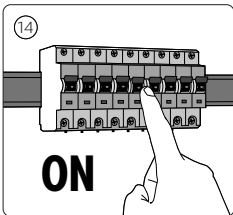


13

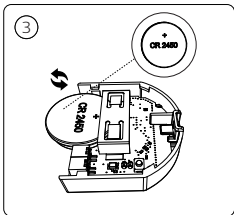
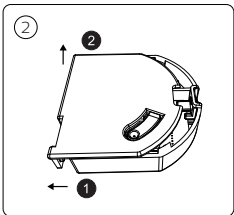
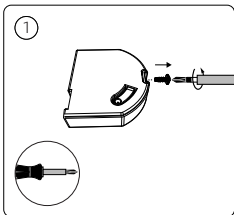
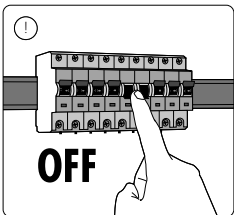
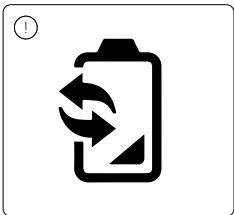
13 &gt; 14

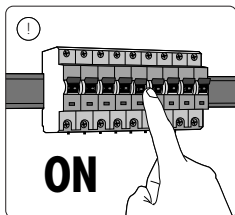
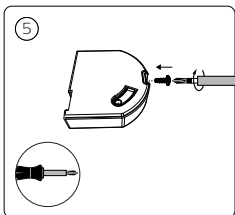
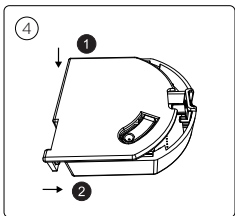






[www.philips-hue.com/wallswitchmodulesupport](http://www.philips-hue.com/wallswitchmodulesupport)







Signify  
I.B.R.S. / C.C.R.I. Numéro 10461  
5600 VB Eindhoven,  
the Netherlands  
☎00800-74454775

[www.philips-hue.com](http://www.philips-hue.com)

© 2020 Signify Holding  
All rights reserved

3222 639 06151  
Last update: 10/2020