

Acceder al vídeo de armado del producto en Youtube
Access animation of product assembly on Youtube
Acesse o video de montagem do produto no Youtube
Accédez à la vidéo de l'assemblage du produit sur YouTube
Link/Lien: <https://www.youtube.com/watch?v=CH4MynNoLjs>



Consejos de Conservación

1. No debe utilizarse en la limpieza, abrasivos como lana de acero, alcohol, limón, o productos corrosivos que puedan rayar o quitar la película en los muebles.
2. Cuando la limpieza de muebles en general, napa y formica, deben utilizarse un paño ligeramente humedecido y jabón suave.
3. Para mover el mueble, es importante que este se eleve desde el suelo, debido a que el arrastre puede causar daño estructural.
4. No deje el mueble en exposición a la intemperie.

Conservation Tips

1. Do not use abrasive products to clean such as steel wool, alcohol, vinegar, lemon, scouring powder, or corrosive products which can scratch or peel off the protective film of the furniture.
2. The best way to clean your furniture is to use a slightly moistened cloth with a mild soap.
3. To move the furniture assembled, it is important that it is lifted off the ground, because the drag it can cause structural damage.
4. Do not leave your furniture in weather exposure.

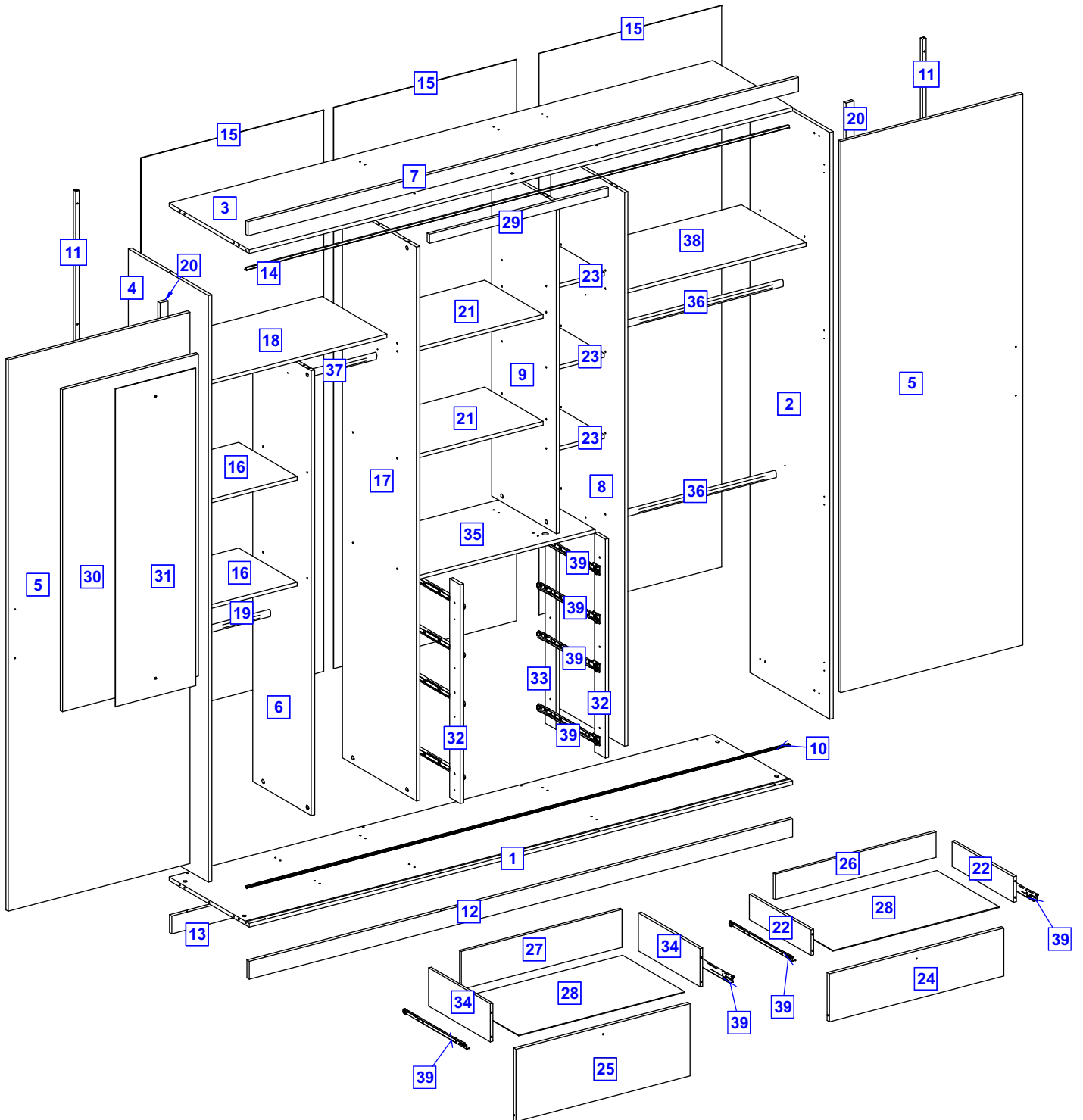
Dicas de conservação

1. Não utilizar na limpeza produtos abrasivos tais como: palha de aço, álcool, vinagre, limão, saponáceo ou produtos corrosivos que possam riscar ou descolar a película protetora dos móveis.
2. Na limpeza de móveis em geral, napa e fórmicas, deve ser utilizado um pano levemente umedecido e sabão neutro.
3. Para a movimentação do móvel, é importante que este seja levantado do chão, pois ao arrastá-lo pode causar avarias estruturais.
4. Não deixe o móvel em exposição a intempéries.

Conseils d'entretien

1. Ne pas utiliser de produits abrasifs dans le nettoyage, tels que: laine d'acier, alcool, vinaigre, citron, poudre à récurer ou autres produits corrosifs pouvant rayer ou faire décoller la pellicule protectrice des meubles.
2. Pour le nettoyage du meuble, il est recommandé d'utiliser un chiffon humide et du savon neutre.
3. Pour déplacer le meuble, il est important de le soulever du sol car le tirer pourrait causer des dommages dans sa structure.
4. Ne pas exposer le meuble aux intempéries.

LISTA DE PEÇAS / PARTS LIST / LISTA DE PEÇAS / LISTE DES PIÈCES



HERRAMIENTAS / HARDWARE
FERRAMENTAS / OUTILS

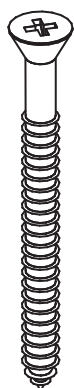


PERSONAS NECESARIAS PARA EL MONTAJE
PEOPLE REQUIRED FOR ASSEMBLY
PESSOAS NECESSÁRIAS PARA A MONTAGEM
NOMBRE DE PERSONNES NÉCESSAIRES À L'ASSEMBLAGE

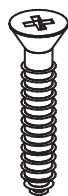


LISTA DE PEÇAS / PARTS LIST / LISTA DE PEÇAS / LISTE DES PIÈCES

#	Cantidad Quantity Quantidade Quantité	Piezas	Pieces	Peças	Pièces	Dimensiones Dimension Dimensões Dimension
1	1	Base	Base	Base	Fond	2370 x 520 x 15
2	1	Lateral Derecha	Right Side Panel	Lateral Direita	Côté Droit	2310 x 520 x 15
3	1	Tampo	Top	Tampo	Pièce du Dessus	2370 x 520 x 15
4	1	Lateral Esquerda	Left Side Panel	Lateral Esquerda	Côté Gauche	2310 x 520 x 15
5	2	Puerta Corredera	Sliding Door	Porta de Correr	Porte Coulissante	2170 x 793 x 15
6	1	División Media	Medium Division	Divisão Média	Séparateur Moyen	1751 x 380 x 15
7	1	Marco Superior	Upper Frame	Moldura Superior	Cadre Supérieur	2400 x 55 x 15
8	1	División Derecha	Right Division	Divisão Maior Direita	Grand Séparateur Droit	2180 x 480 x 15
9	1	División Menor	Small Division	Divisão Menor	Petit Séparateur	1303 x 420 x 15
10	1	Trilho Inferior	Lower Profile	Trilho Inferior	Rail Inférieur	2368mm
11	2	Soporte Puerta	Door Support	Desempenador	Support Porte	1490mm
12	1	Zócalo Delantero	Front Baseboard	Rodapé Dianteiro	Socle Avant	2370 x 70 x 15
13	1	Zócalo Trasero	Back Baseboard	Rodapé Traseiro	Socle Arrière	2370 x 70 x 15
14	1	Trilho Superior	Upper Profile	Trilho Superior	Rail Supérieur	2368mm
15	3	Costado	Back	Costa	Pièce Arrière	2210 x 797 x 3
16	2	Repisa Fija	Fixed Shelf	Prateleira Fixa	Étagère Fixe	410 x 380 x 15
17	1	División Esquerda	Left Division	Divisão Esquerda	Grand Séparateur Gauche	2180 x 480 x 15
18	1	Repisa Maior	Large Shelf	Prateleira Maior	Grande Étagère	780 x 420 x 15
19	1	Rolizo Percha	Hanger Rail	Cabideiro	Cintre	400mm
20	2	Marco Porta Corredera	Sliding Door Frame	Moldura Porta Correr	Cadre Porte Coulissante	2170 x 35 x 15
21	2	Repisa Media	Medium Shelf	Prateleira Média	Étagère Moyenne	567 x 380 x 15
22	6	Lateral Cajón	Drawer Side	Lateral de Gaveta	Côtés Droit et Gauche Tiroir	400 x 100 x 12
23	3	Repisa Menor	Small Shelf	Prateleira Menor	Petit Étagère	198 x 380 x 15
24	3	Frente Cajón Menor	Small Drawer Front	Frente Gaveta Menor	Façade Petit Tiroir	760 x 189 x 15
25	1	Frente Cajón Maior	Large Drawer Front	Frente Gaveta Maior	Façade Grand Tiroir	760 x 285 x 15
26	3	Trasero Cajón	Drawer Back	Costa Gaveta	Pièce Arrière Tiroir	701 x 100 x 12
27	1	Trasero Cajón Mayor	Large Drawer Back	Costa Gaveta Maior	Pièce Arrière Grand Tiroir	701 x 150 x 12
28	4	Fondo Cajón	Drawer Bottom	Fundo Gaveta	Fond Tiroir	725 x 405 x 3
29	1	Marco Interno	Internal Frame	Moldura Interna	Cadre Interne	780 x 35 x 15
30	1	Puerta Menor	Small Door	Porta Menor	Petit Porte	1268 x 592 x 15
31	1	Espejo	Mirror	Espelho	Miroir	1250 x 350 x 3
32	2	Distanciador Cajón Frontal	Drawer Front Separator	Afastador Dianteiro	Séparateur Avant	862 x 70 x 15
33	2	Distanciador Cajón Trasero	Back Front Separator	Afastador Traseiro	Séparateur Arrière	862 x 70 x 15
34	2	Lateral Cajón Mayor	Large Drawer Side	Lateral de Gaveta Mayor	Côtés Droit et Gauche Grand Tiroir	400 x 150 x 12
35	1	Tapa Cajones	Top of Drawer	Tampo Gavetas	Plafond Tiroirs	780 x 420 x 15
36	2	Rolizo Percha	Hanger Rail	Cabideiro	Cintre	770mm
37	1	Rolizo Percha	Hanger Rail	Cabideiro	Cintre	345mm
38	1	Repisa	Shelf	Prateleira	Étagère	780 x 420 x 15
39	4	Corredera Metálica	Metalic Sliding	Corred. Metálica	Glissière Métallique	400mm



A-48x



B-30x



C-8x



D-130x



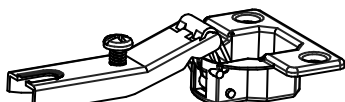
E-40x



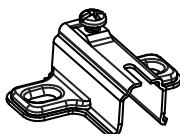
F-24x



G-24x



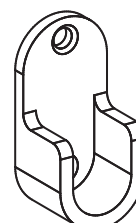
H-3x



I-3x



J-30x



K-8x



L-8x



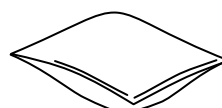
M-8x



N-24x



O-8x



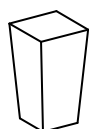
P-1x



Q-18x



R-50x



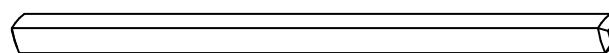
S-4x



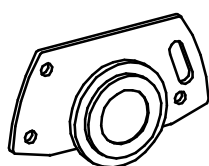
T-110x



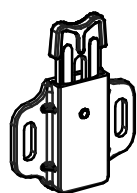
U-56x



V-2x



X-4x

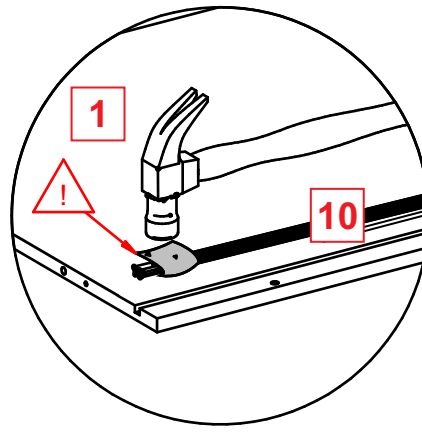
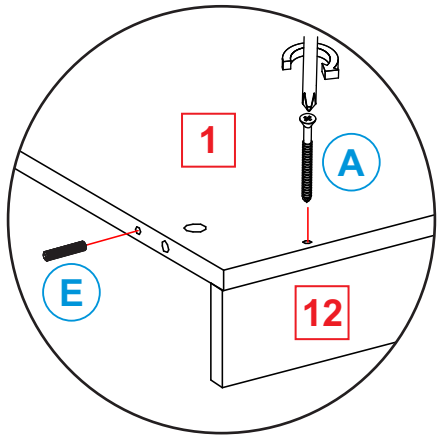


Y-4x



Z-24x

1

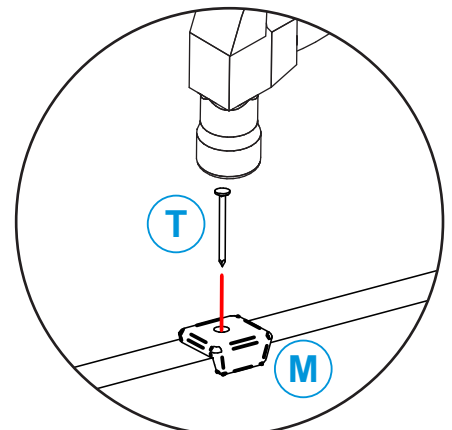
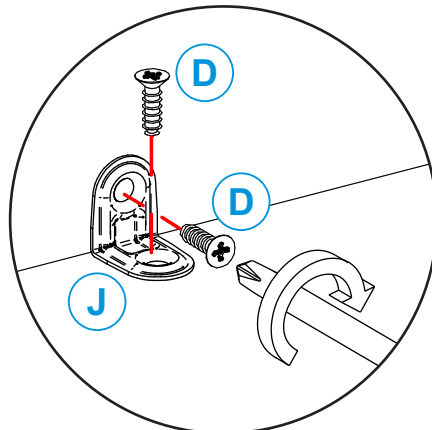
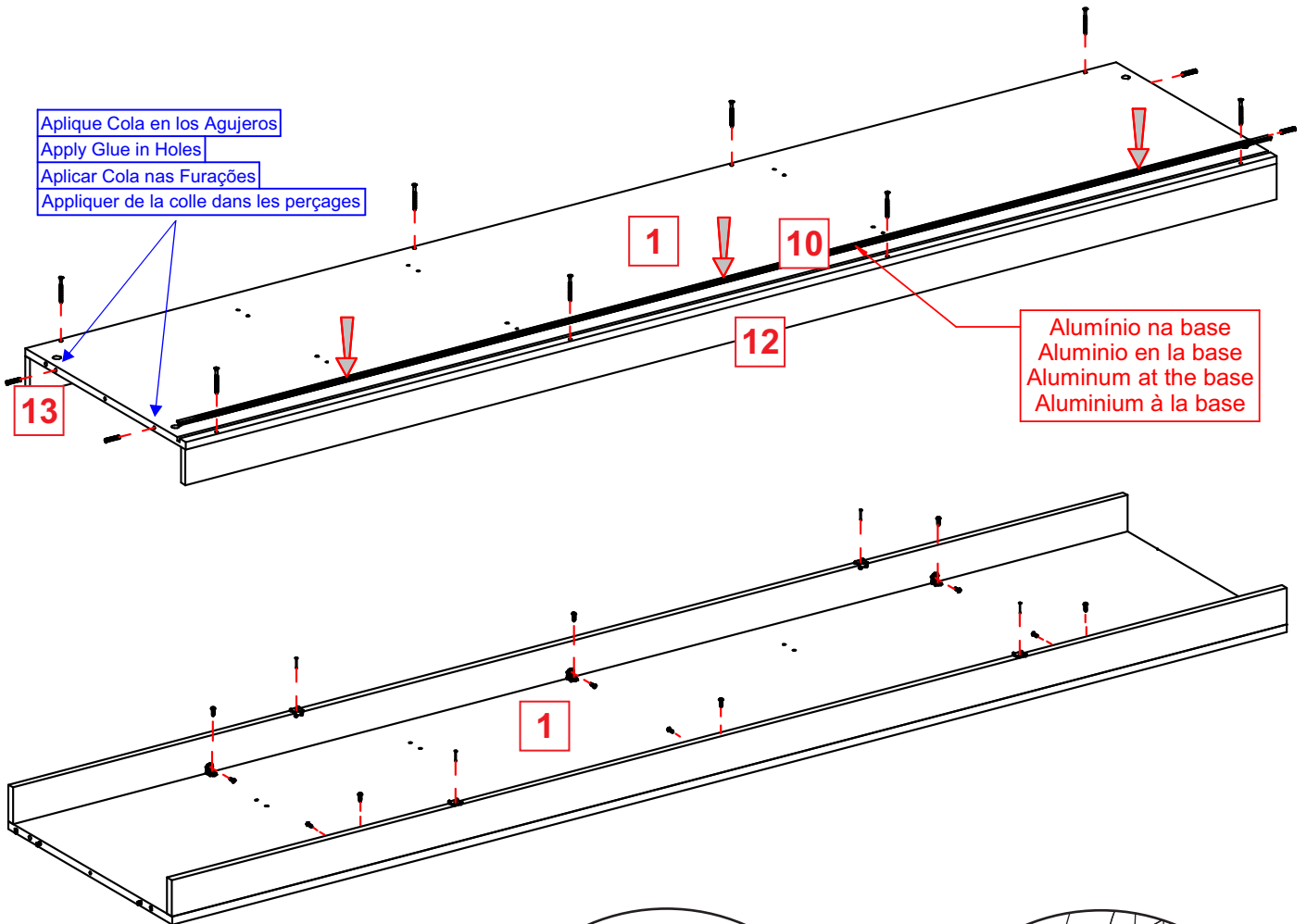


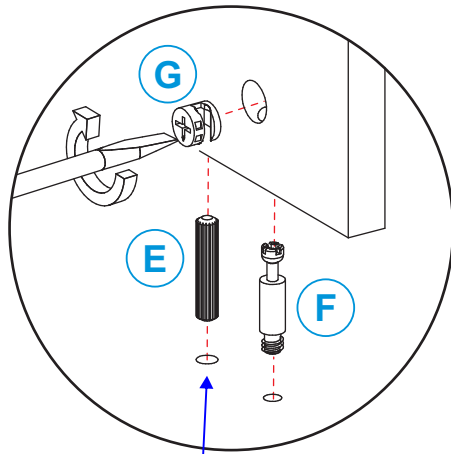
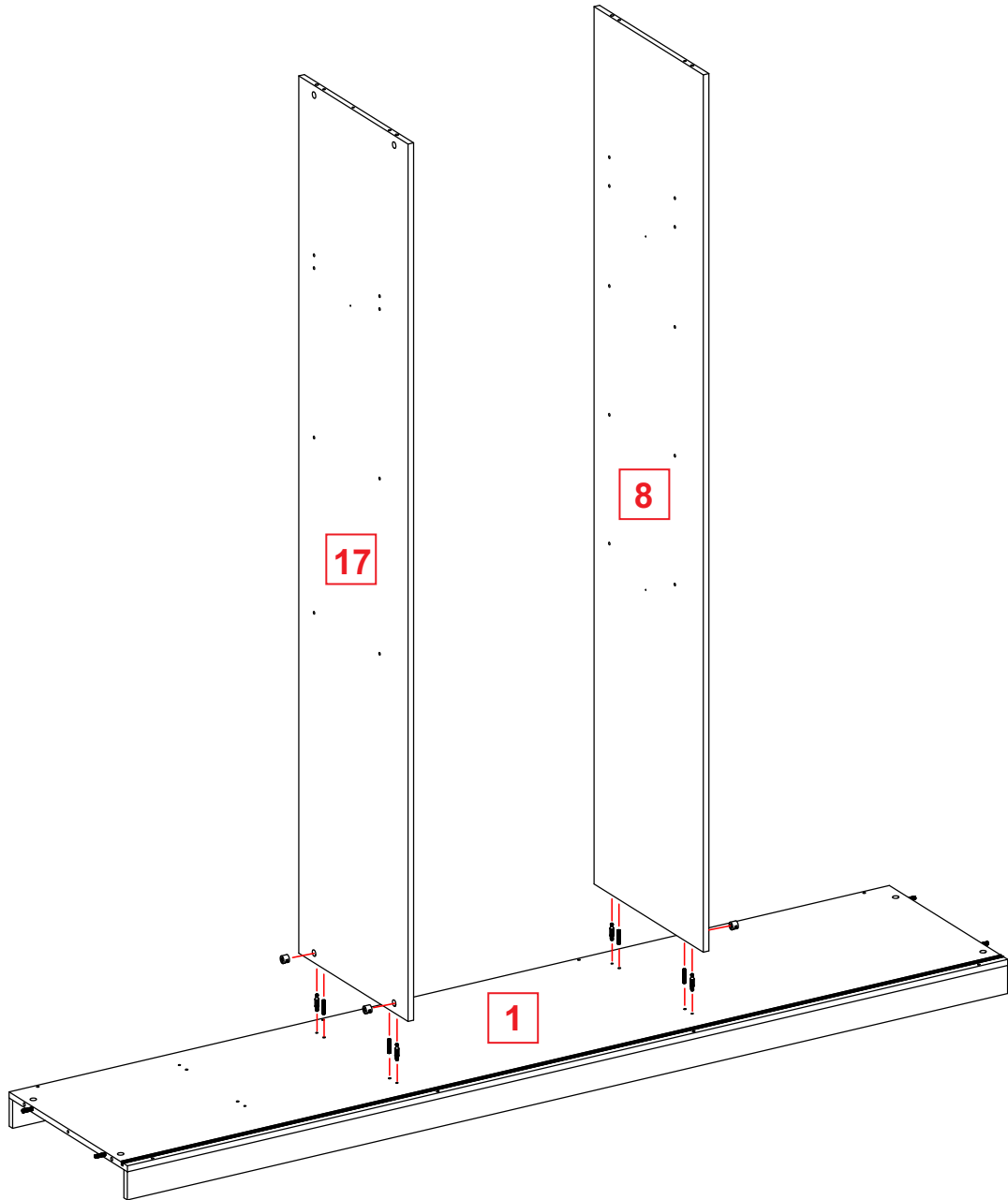
Não bata diretamente, utilize proteção entre o martelo e o perfil.

No golpee directamente, use protección entre el martillo y el perfil.

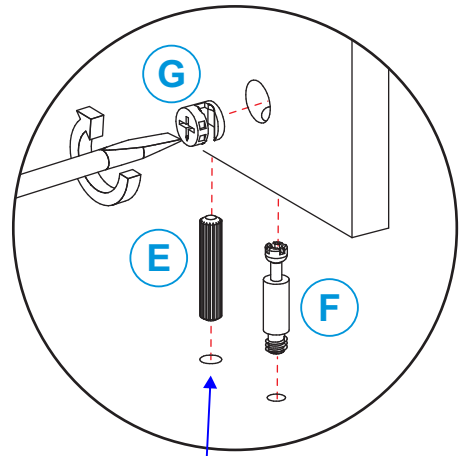
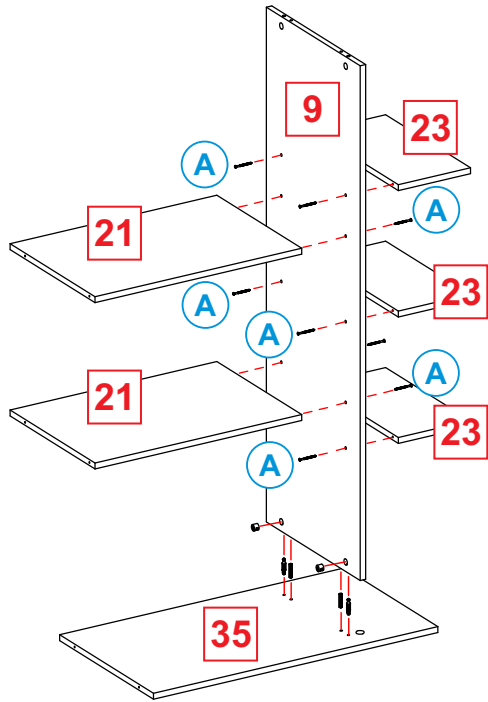
Do not hit directly, use protection between the hammer and the profile.

Ne pas frapper directement, utiliser une protection entre le marteau et le profil.

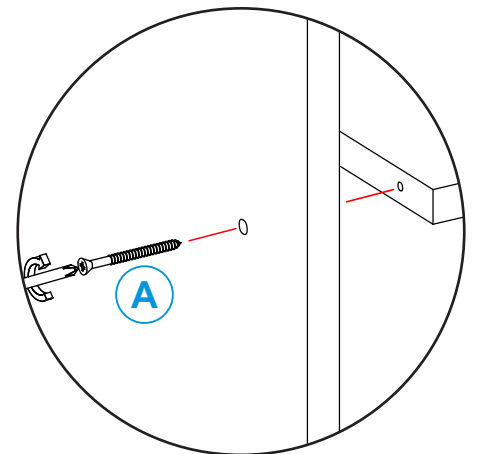
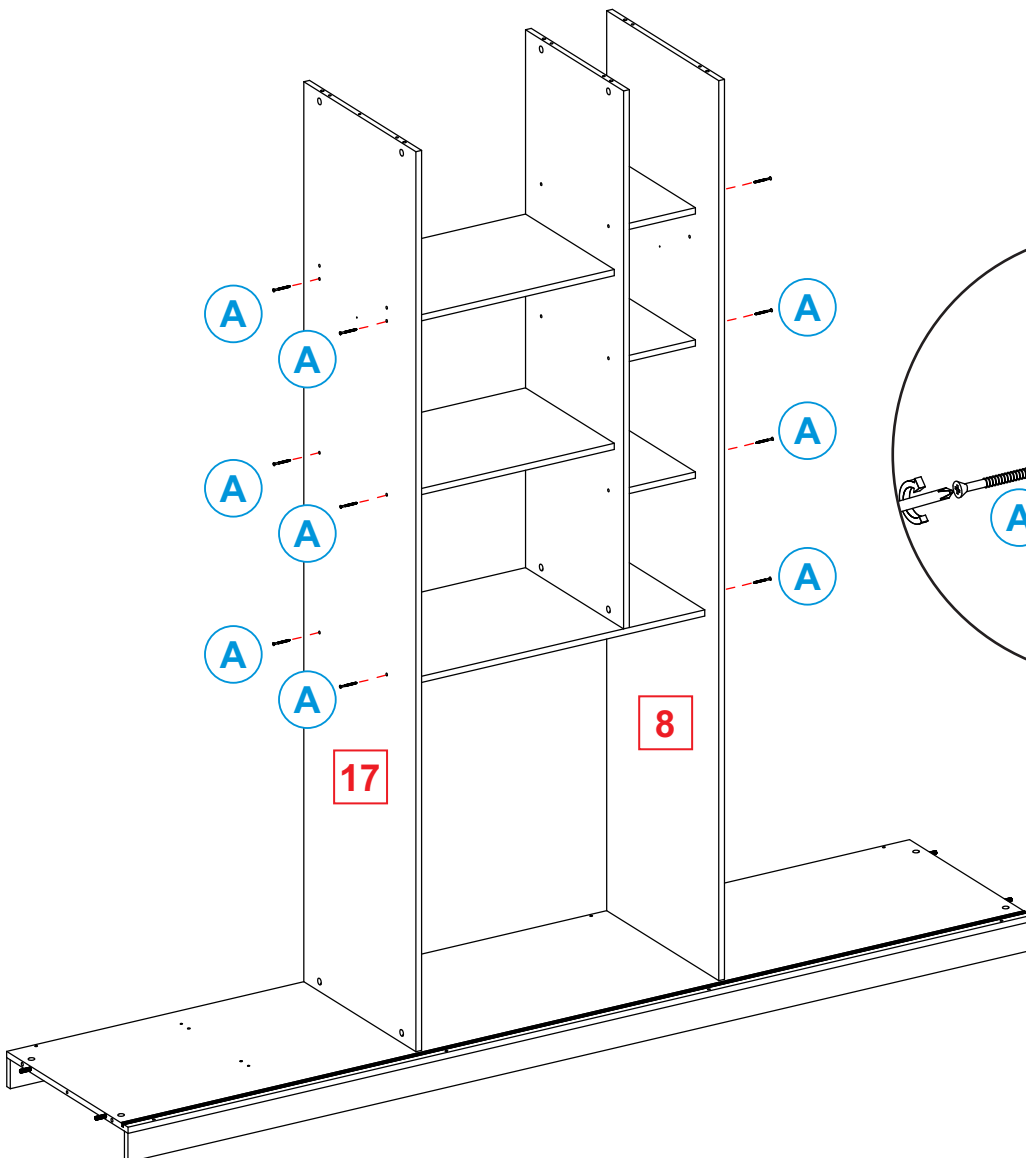


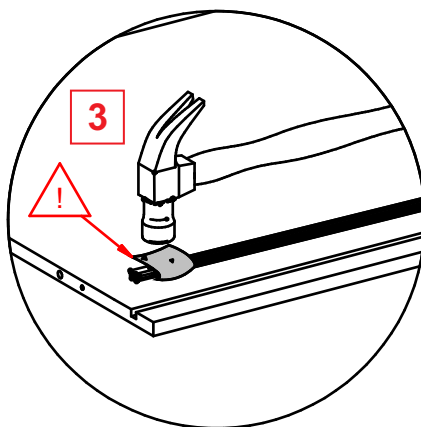
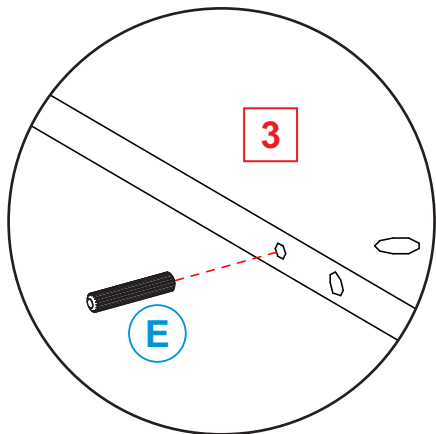


Aplique Cola en los Agujeros
Apply Glue in Holes
Aplicar Cola nas Furações
Appliquer de la colle dans les perçages



Aplique Cola en los Agujeros
Apply Glue in Holes
Aplicar Cola nas Furações
Appliquer de la colle dans les perçages





Não bata diretamente, utilize proteção entre o martelo e o perfil.

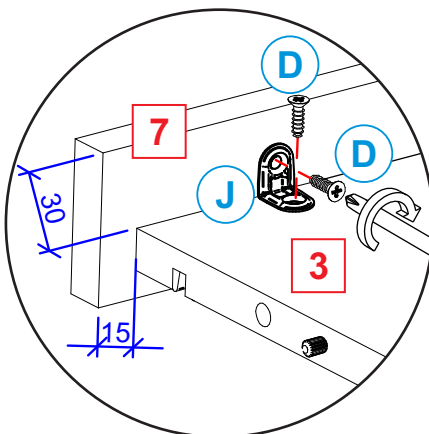
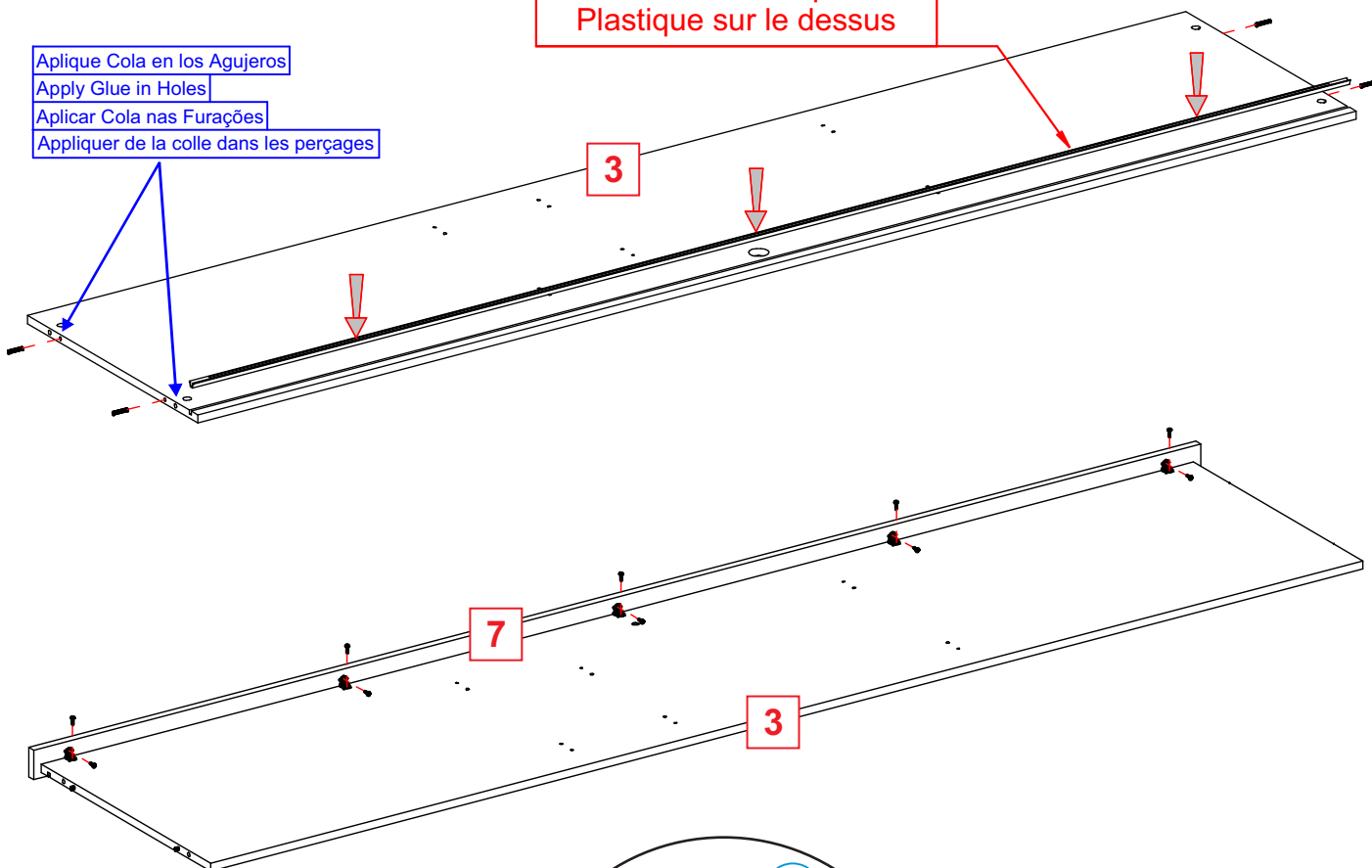
No golpee directamente, use protección entre el martillo y el perfil.

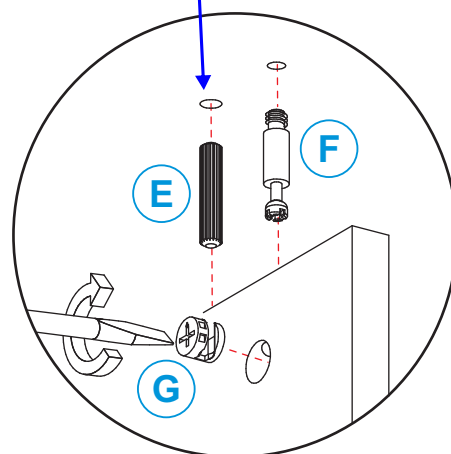
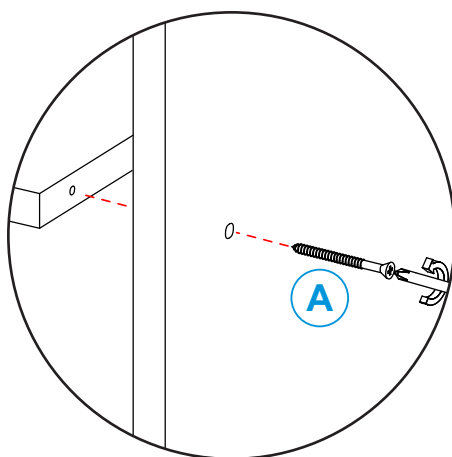
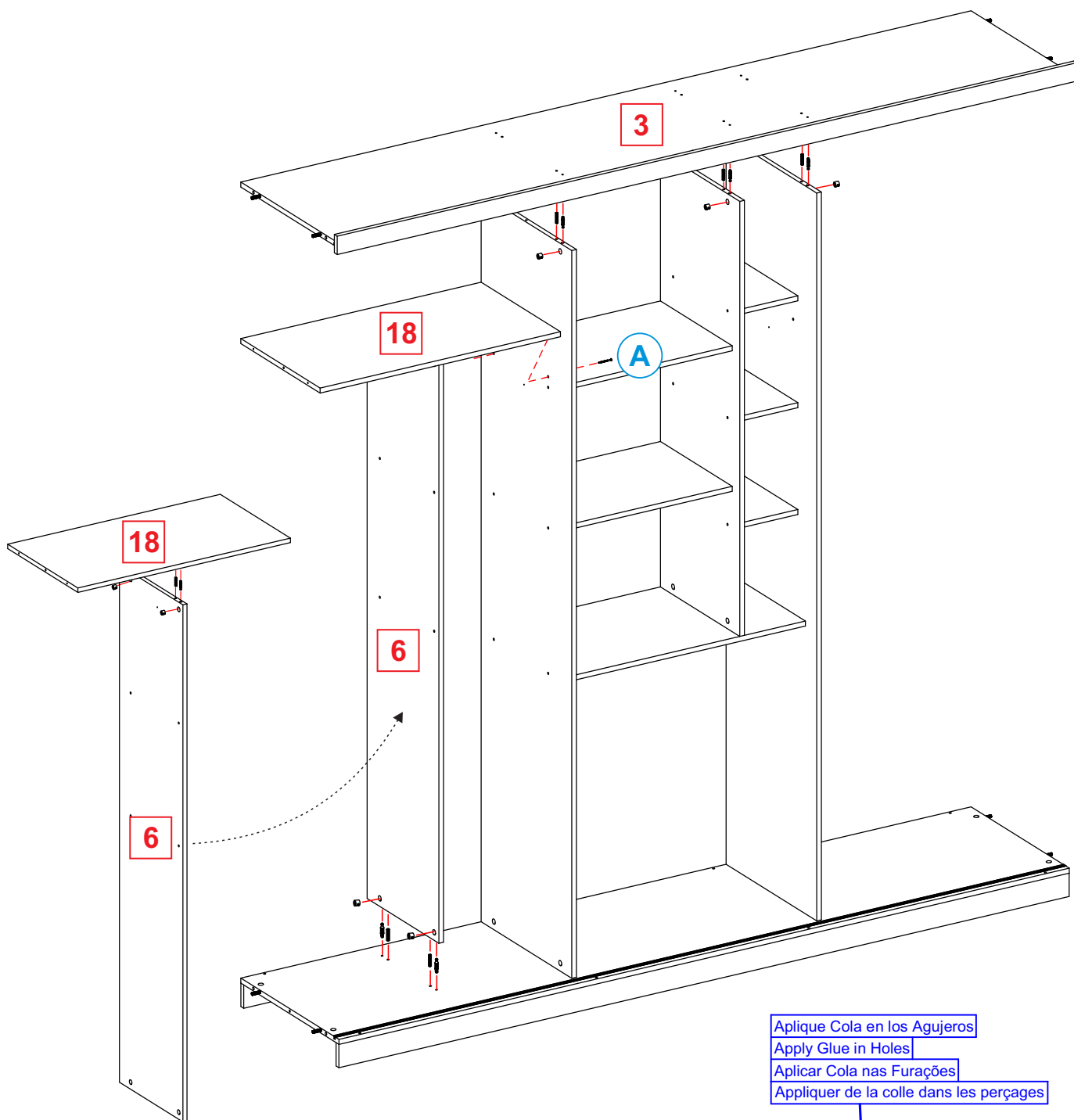
Do not hit directly, use protection between the hammer and the profile.

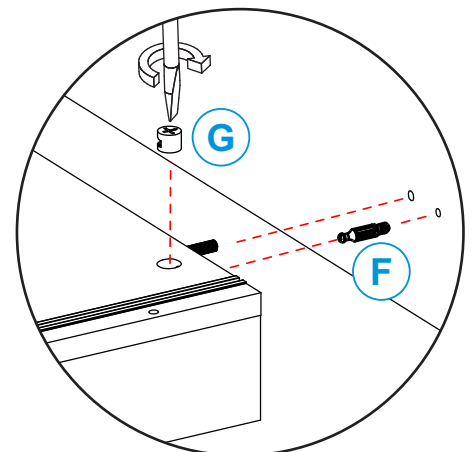
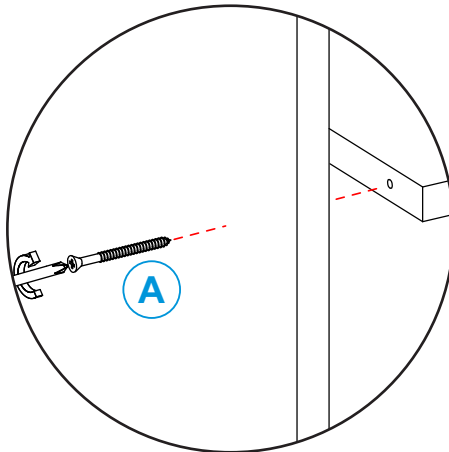
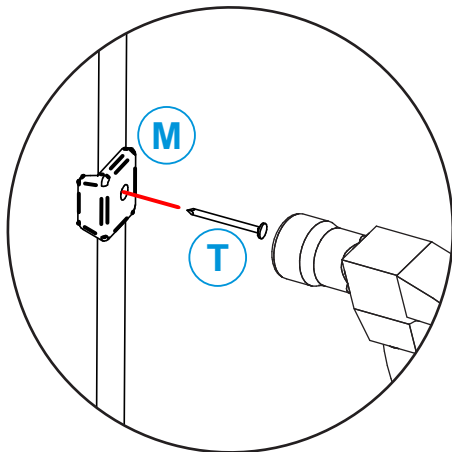
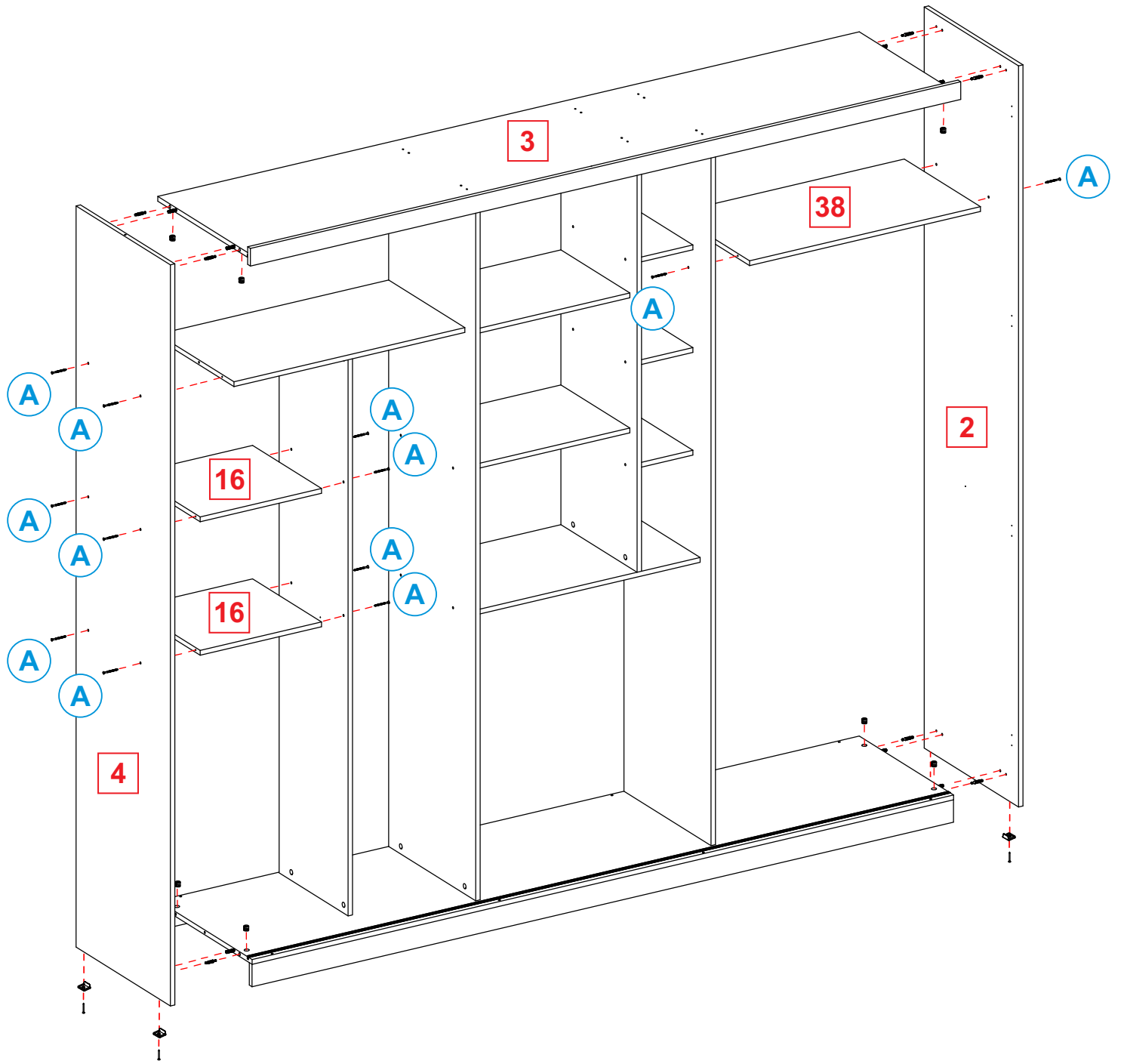
Ne pas frapper directement, utiliser une protection entre le marteau et le profil.

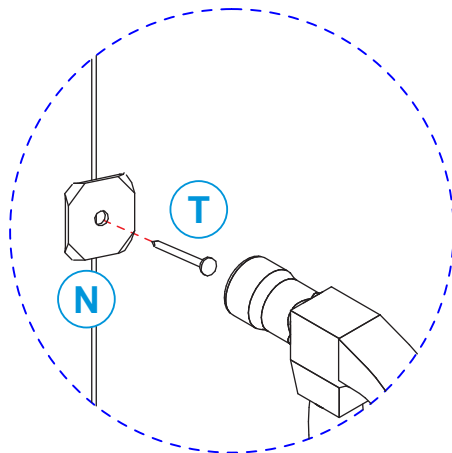
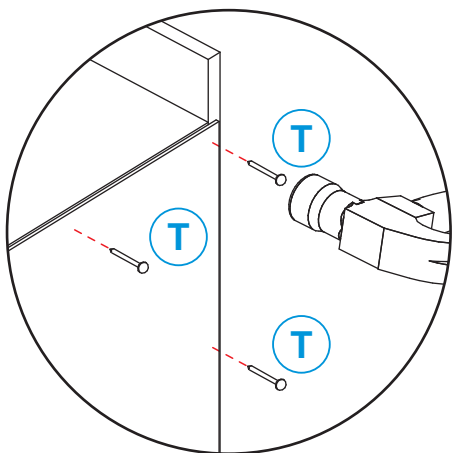
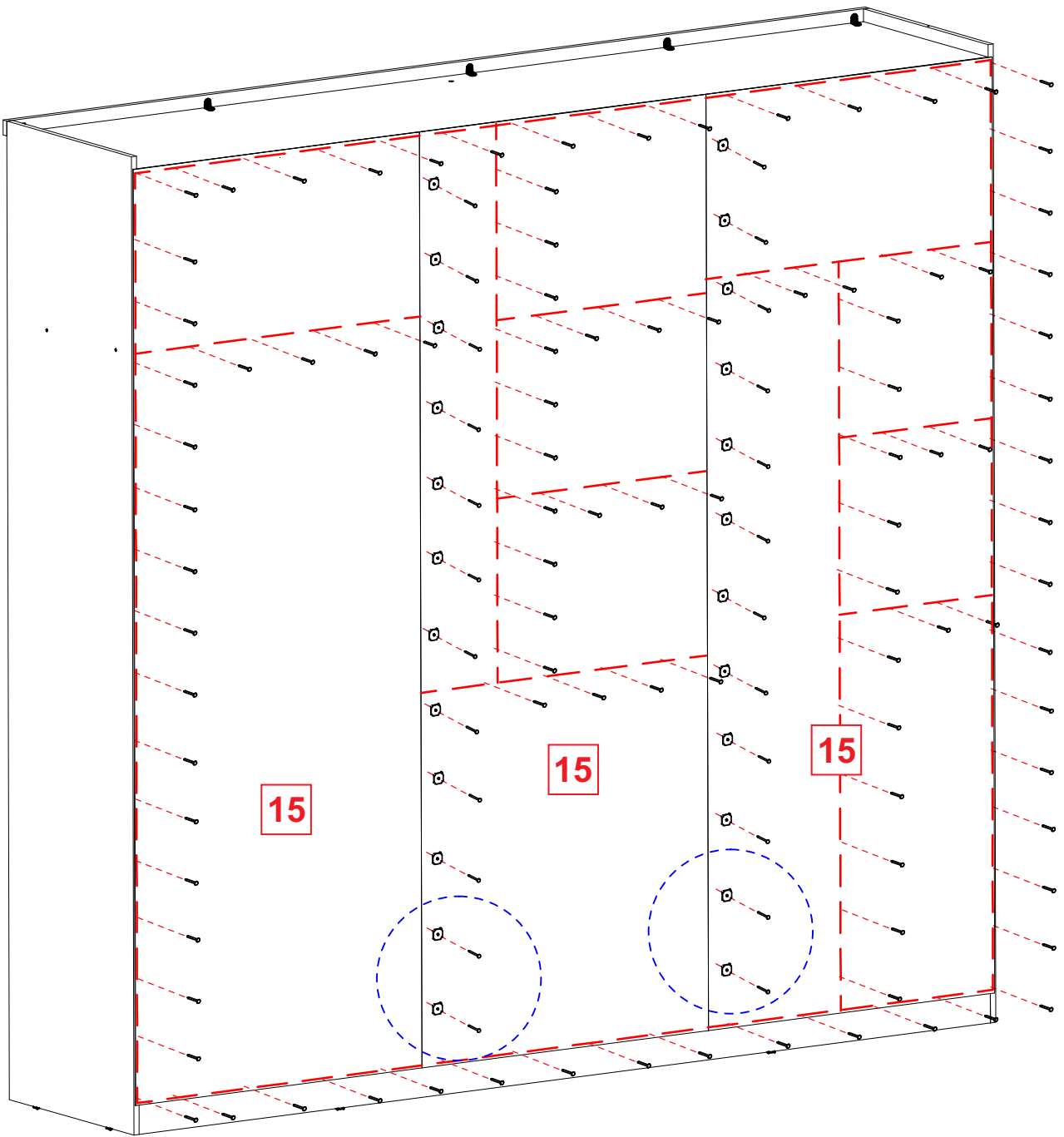
Plástico no tampo
Plástico en la parte superior
Plastic on top
Plastique sur le dessus

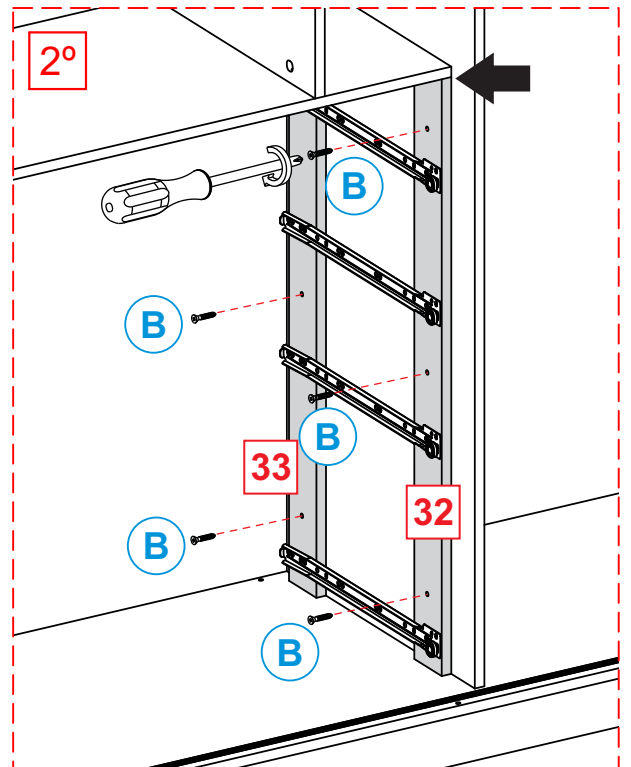
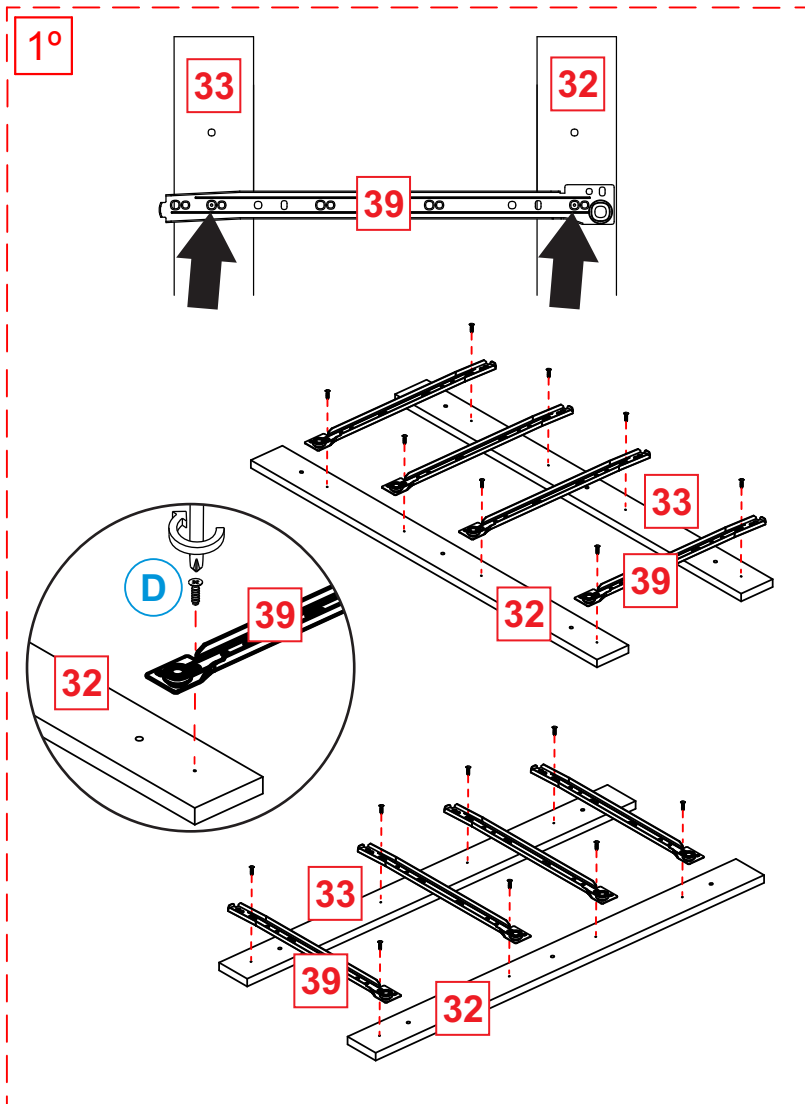
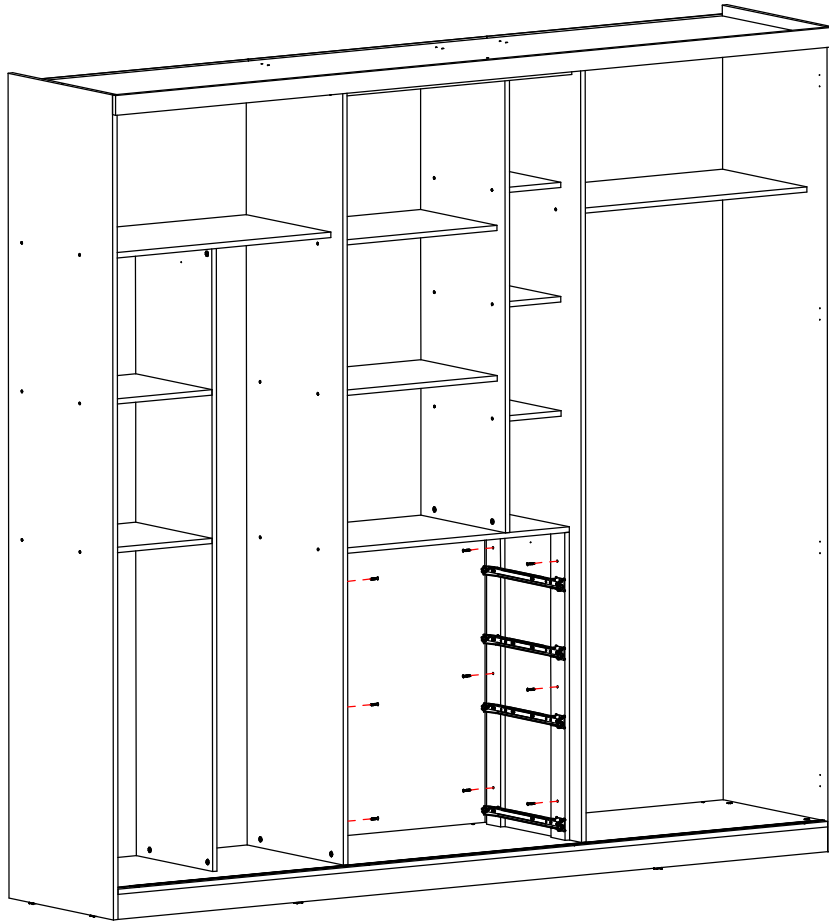
Aplique Cola en los Agujeros
Apply Glue in Holes
Aplicar Cola nas Furações
Appliquer de la colle dans les perçages

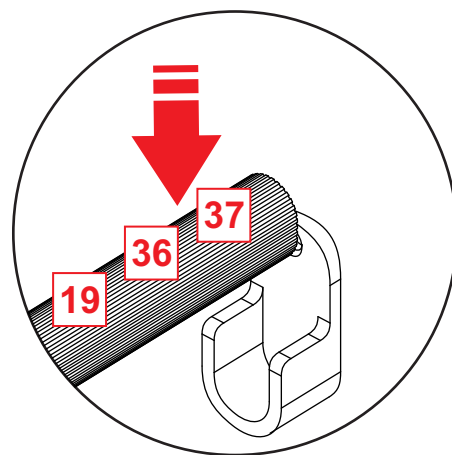
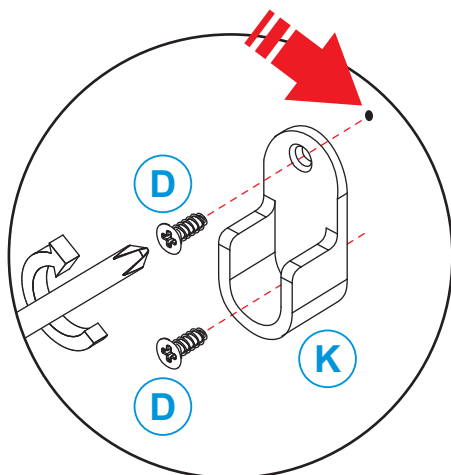
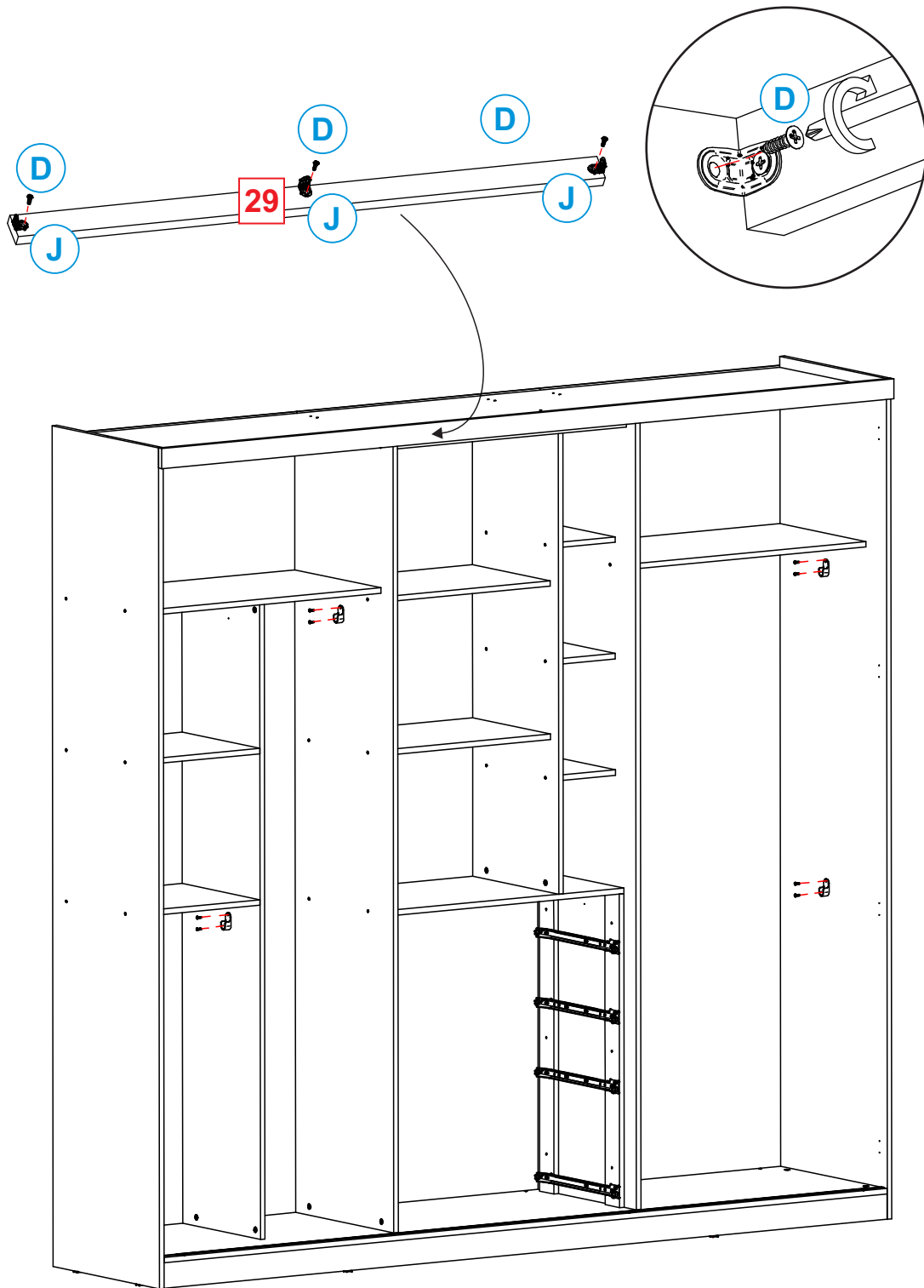




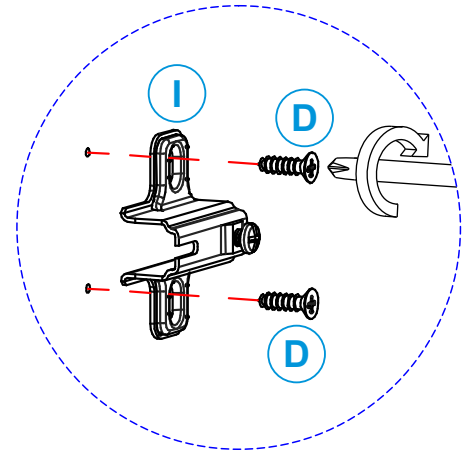
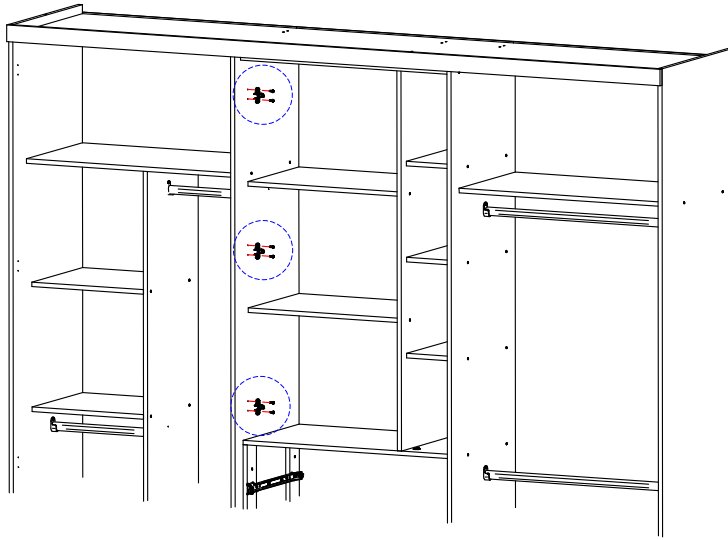




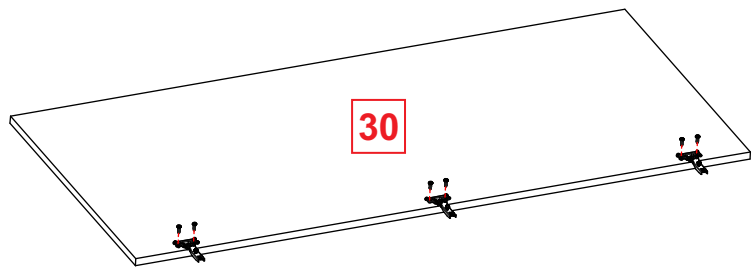
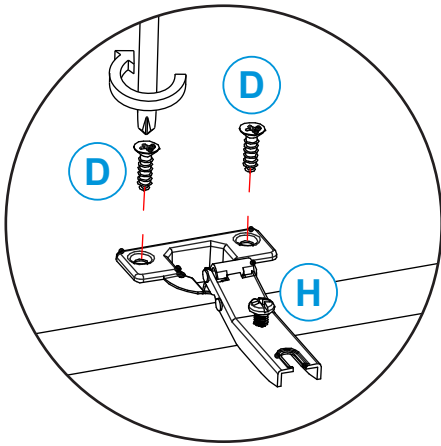




11

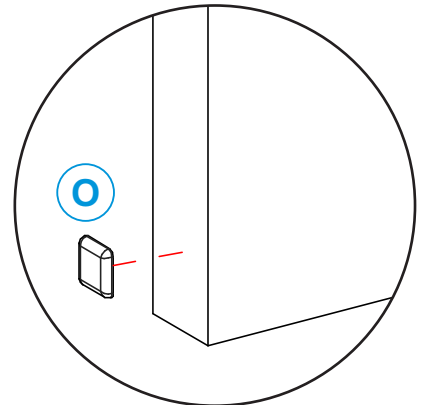
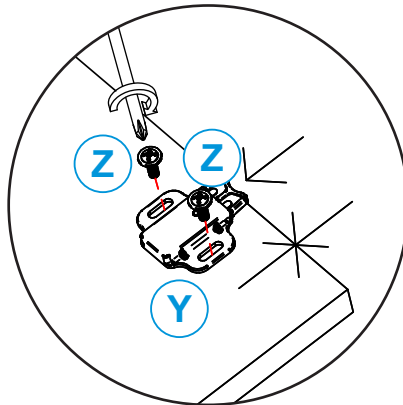
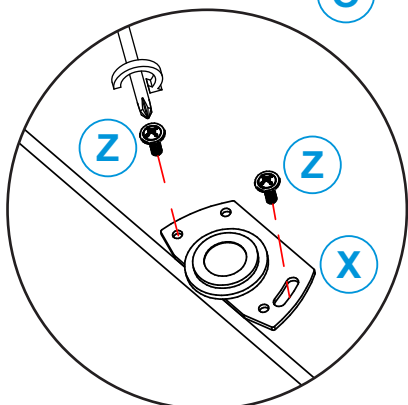
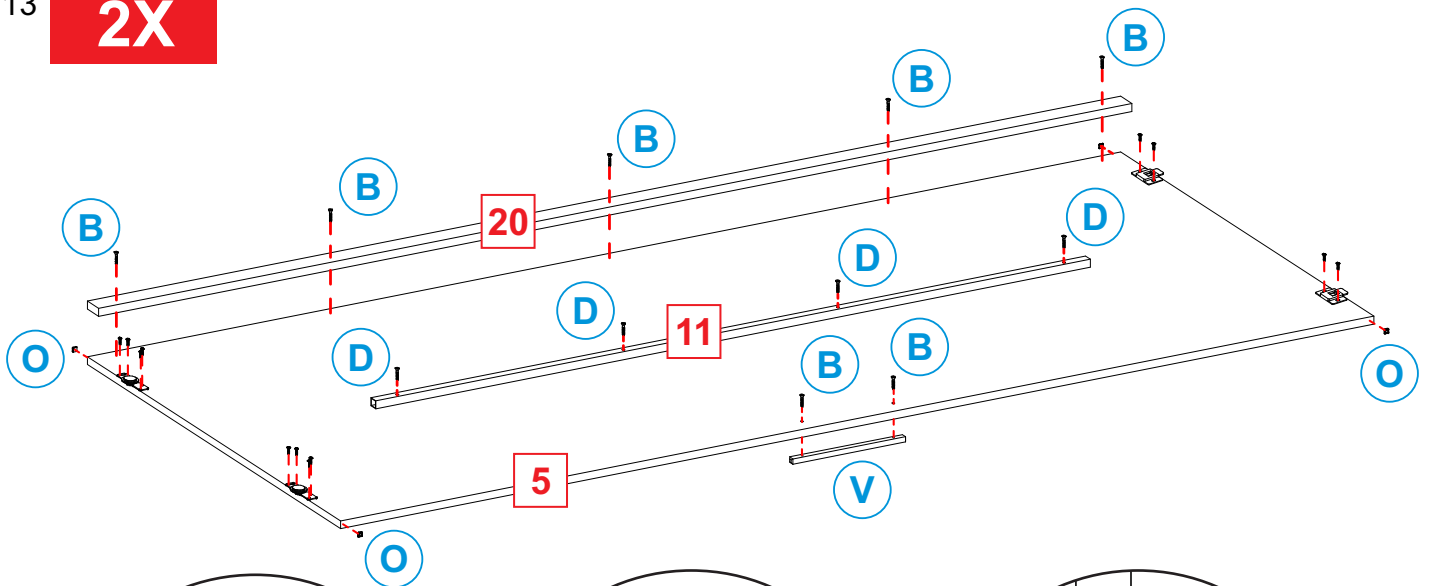


12

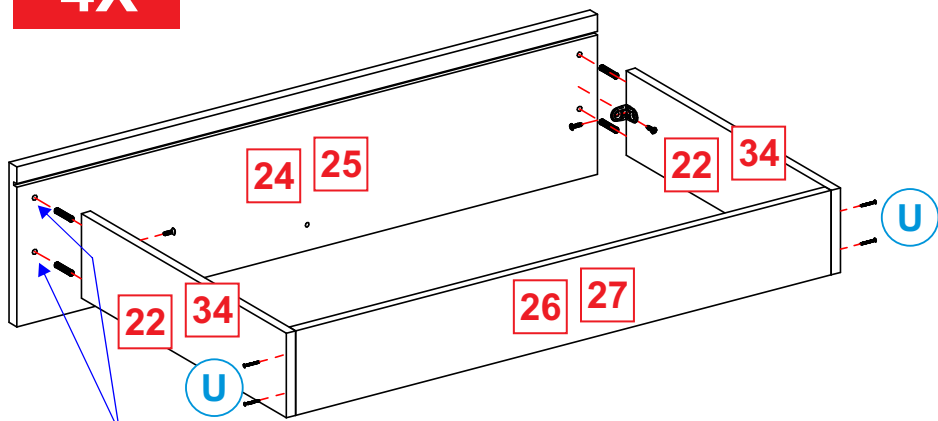


13

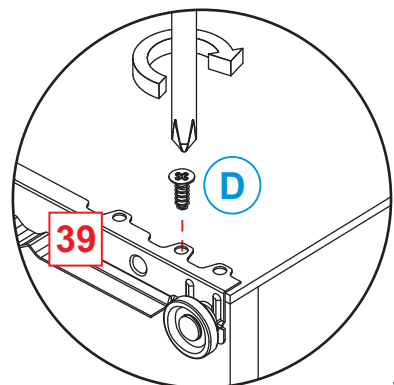
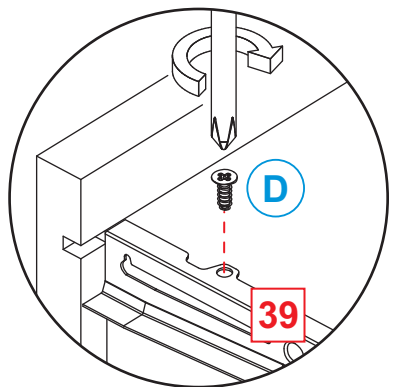
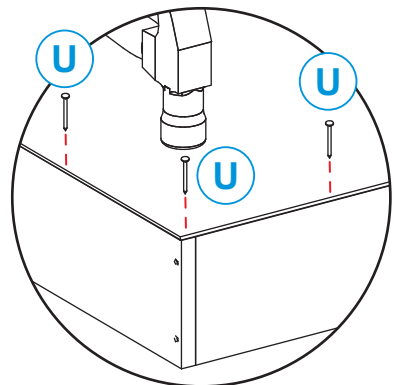
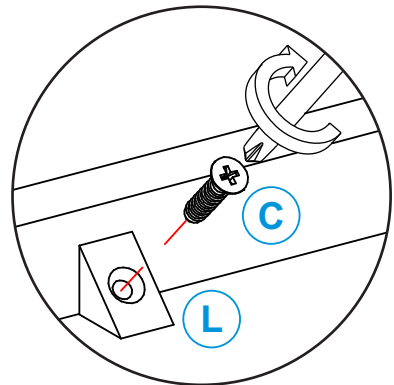
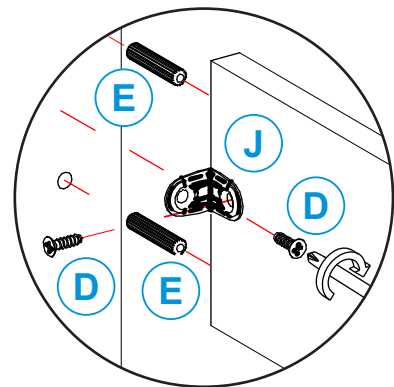
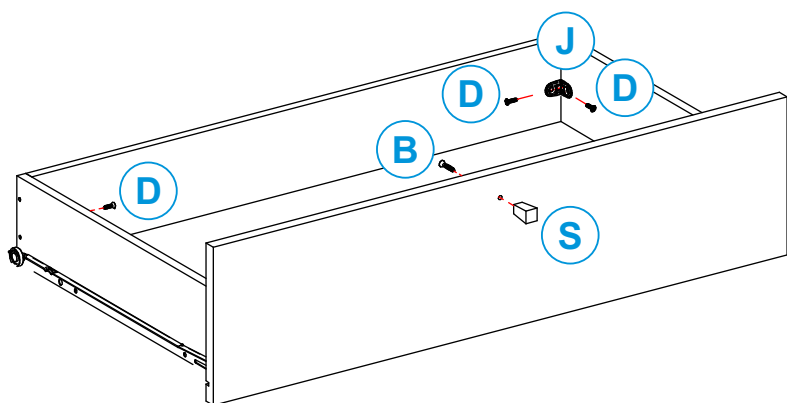
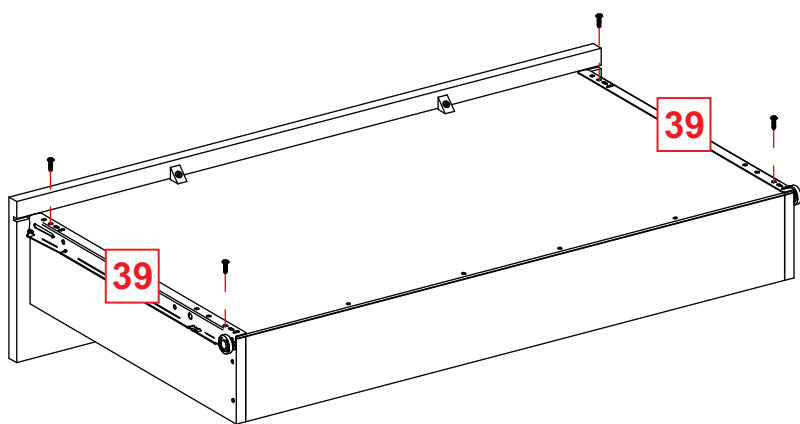
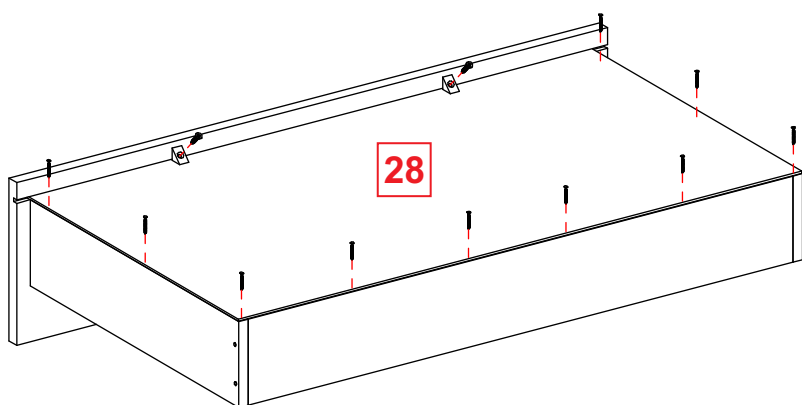
2X

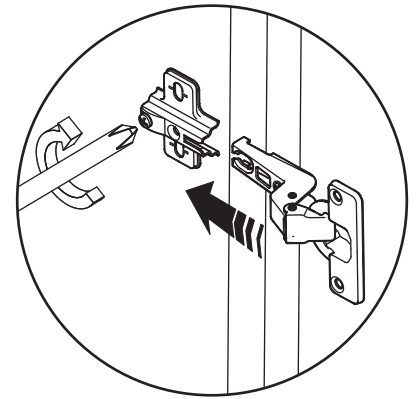
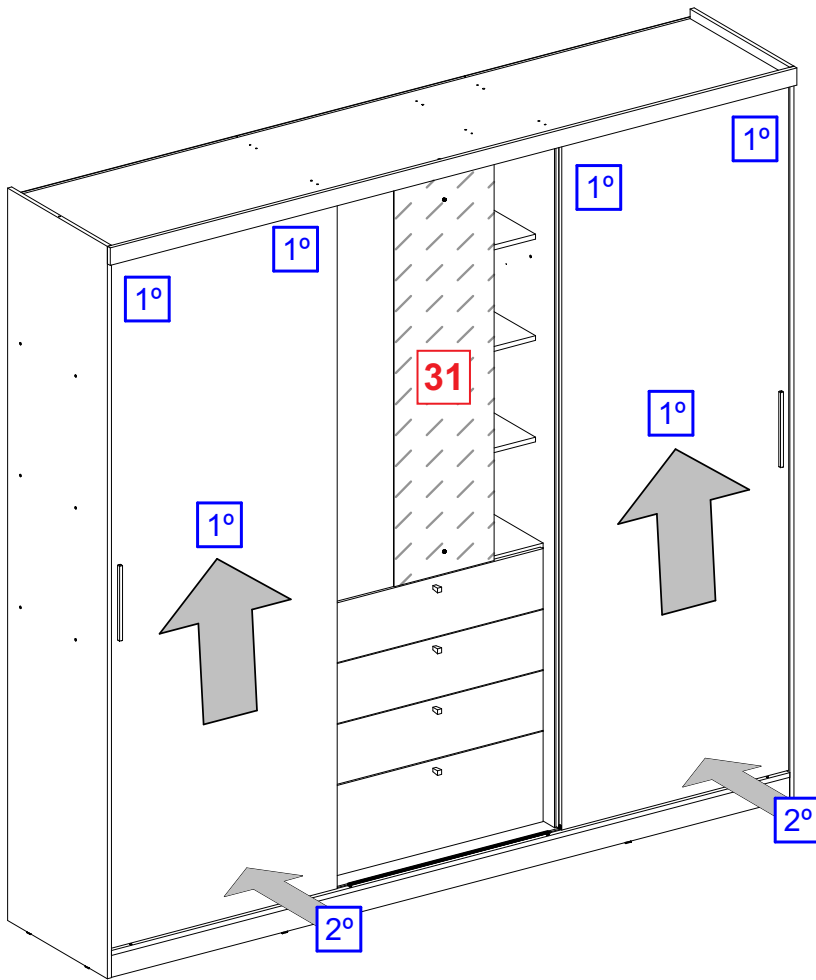


4X

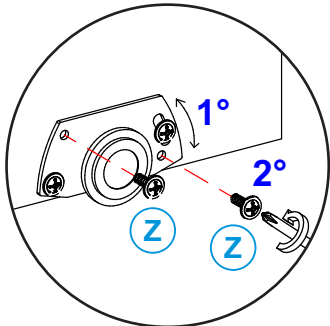
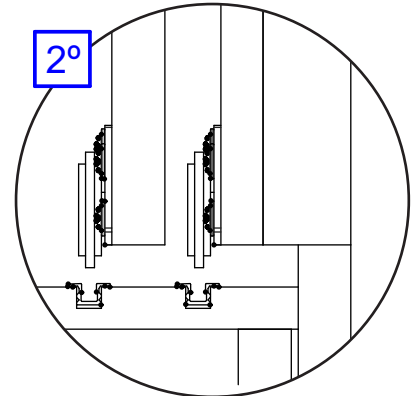
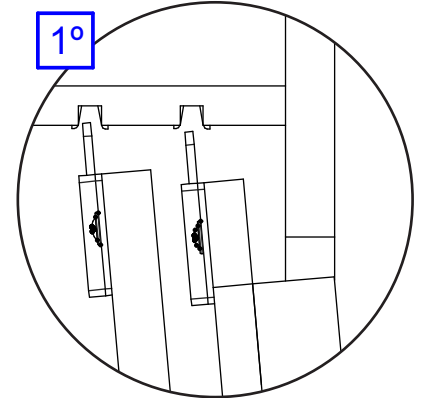


Aplique Cola en los Agujeros
 Apply Glue in Holes
 Aplicar Cola nas Furações
 Appliquer de la colle dans les perçages

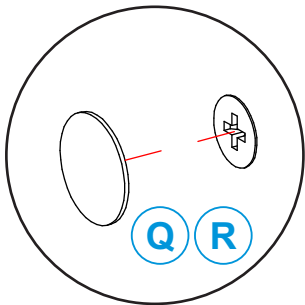




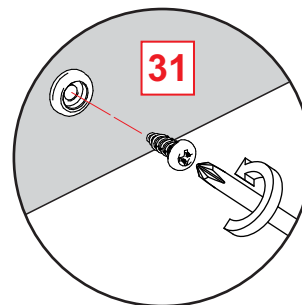
Encaje de la puerta
Door setting
Encaixe da porta
Assemblage des portes



Ajuste das Portas de Correr
Sliding Doors Adjustment
Ajuste de las Puertas Correderas
Réglage de Portes Coulissantes

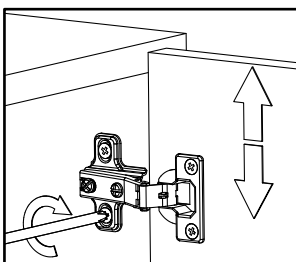


Aplique los adhesivos en los puntos de fijación aparentes.
Fix the stickers to the drillings.
Aplique os adesivos nos pontos de fixação aparente.
Poser les pastilles adhésives dans les trous de fixation des parois.

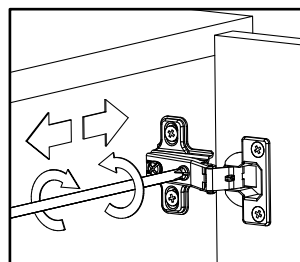


Accesorios se incluyen con el paquete del espejo.
Accessories come with the package mirror.
Acessórios acompanham a embalagem do espelho.
Accessoires inclus dans l'emballage du miroir.

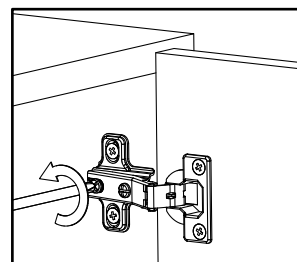
Ajuste da Porta / Door Adjustment / Ajuste de la Puerta / Réglage des charnières de la porte



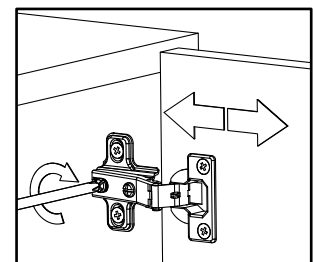
Ajuste del alto
Height adjustment
Ajuste de altura
Réglage en hauteur



Ajuste interno
Internal adjustment
Ajuste interno
Réglage latéral

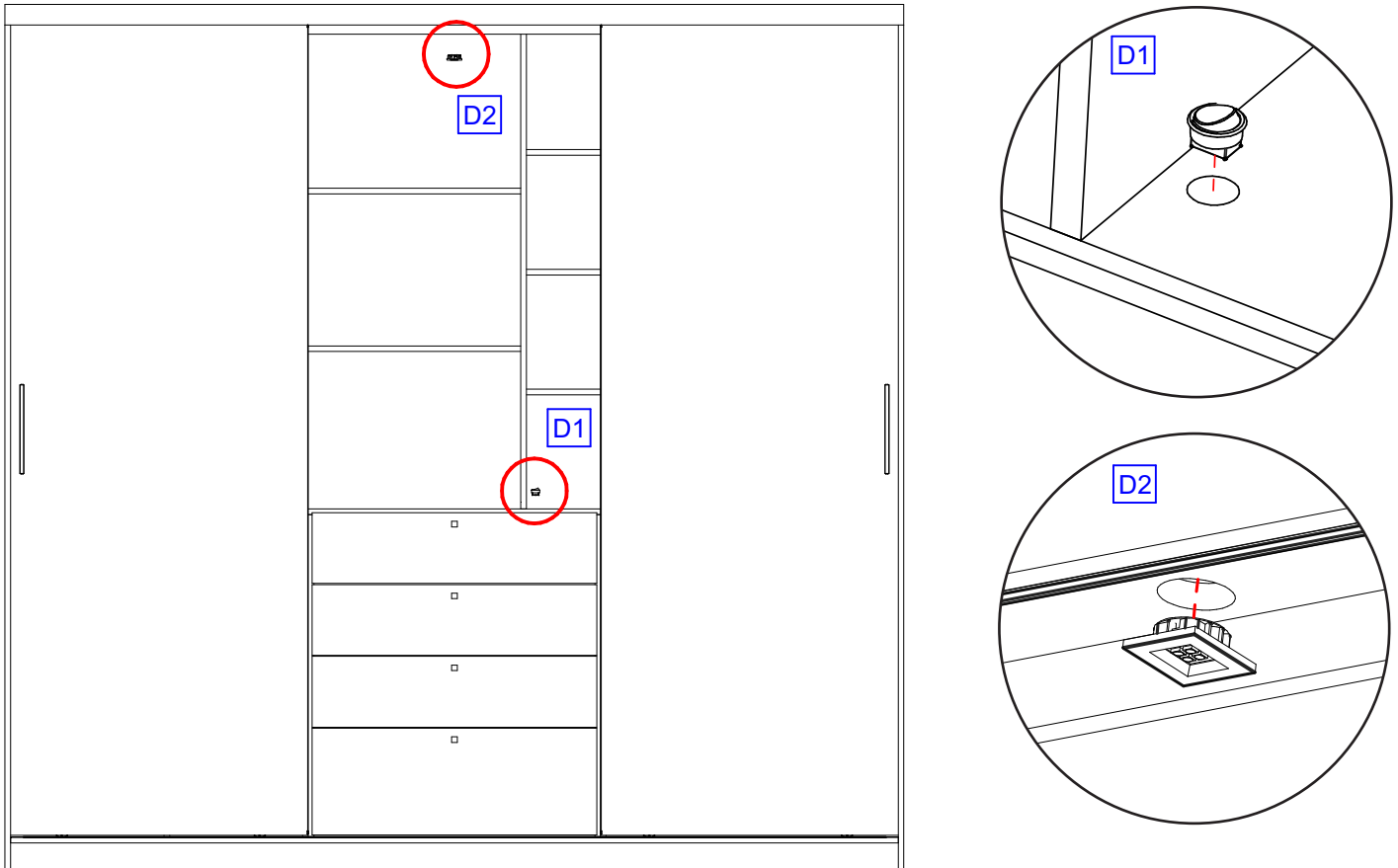


Ajuste de la profundidad
Depth adjustment
Ajuste de profundidade
Réglage en profondeur



Installation Lamp Kit / Kit de instalación de la lámpara / Instalação do Kit Luminária / Installation du Kit Limière

1º: Placing switch and lamp / Colocación interruptor y lámpara / Colocação do interruptor e da luminária / Placement de l'interrepteur et de la lampe



2º: Will need to drill one of the central backs of wardrobe, using a drill $\text{\O}15\text{mm}$, as specified measurements. After following the instructions in the manual that came with the lamp kit box, pass the electrical wiring behind the wardrobe, making the connection between lamp and switch correctly.

Tendrá que perforar una de las costas centrales del armario, usando un taladro de $\text{\O}15\text{mm}$, como medidas especificadas. Después de seguir las instrucciones en el manual que viene con la caja del kit de la lámpara, pase el cableado eléctrico detrás del armario, por lo que la conexión entre la lámpara y cambiar correctamente.

Será necessário furar uma das costas centrais do roupeiro, usando um broca de $\text{\O}15\text{mm}$, conforme medidas especificadas. Após, seguindo as instruções do manual que acompanha a caixa do kit luminária, passar a fiação elétrica por trás do roupeiro, fazendo a ligação entre luminária e interruptor corretamente.

Perçer un trou dans la paroi du milieu arrière de l'armoire, en utilisant une perceuse 15mm, conformément aux mesures apécifiés. Ensuite, en suivant les instructions de la notice incluse dans le Kit Lumière, passer le câble électrique derrière l'armoire, en raccordant correctement la lampe à l'interrupteur.

